

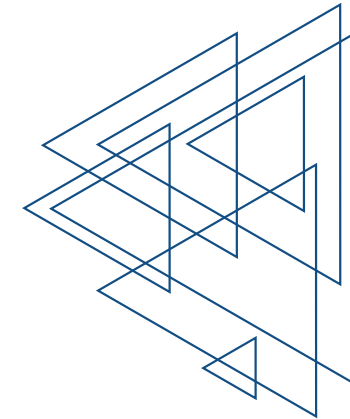
# PRICOM 7000 Setup Guide

Scanner Server

silex  
technology

silex technology, Inc.  
www.silex.jp

Dec, 2002  
WA00740XX



PRICOM 7000

Setup Guide  
Scanner Server

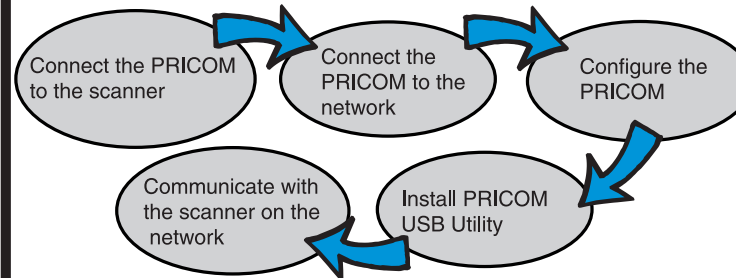
## 1 Introduction

-This document describes the steps for installing and configuring PRICOM 7000 as a **Scanner Server** in Windows environments. Refer to the Users Manual recorded in the bundled CD-ROM for more details.

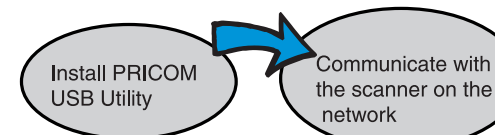
\* Scanner server function can be utilized only from Windows 2000 and Windows XP.

## 2 Steps for Initial Installation and Configuration

### -For Administrators

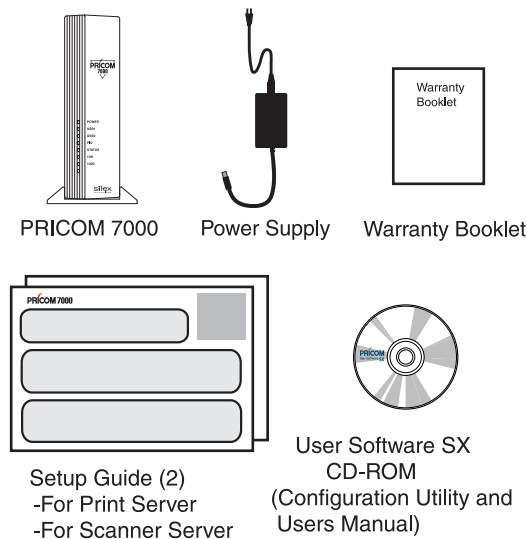


### -For Clients

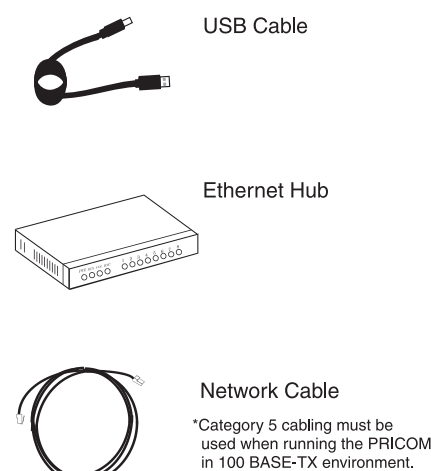


## 3 Package Contents

-Carefully remove all items from the box.



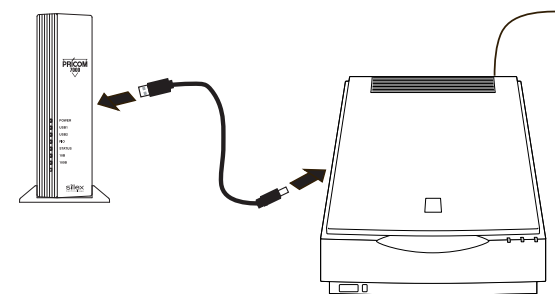
-The following items are not included in the box. These may be purchased separately.



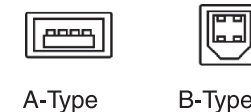
## 4 Connect the PRICOM to the Scanner

-Connect a scanner and the PRICOM with a USB cable.

\* You can plug any USB device with the PRICOM without shutting down the power of the connected printer because of the USB Hot Plug feature.



\* The USB cable has two different connector types. The PRICOM USB port is A-type. Verify the type before you connect the PRICOM to the printer.



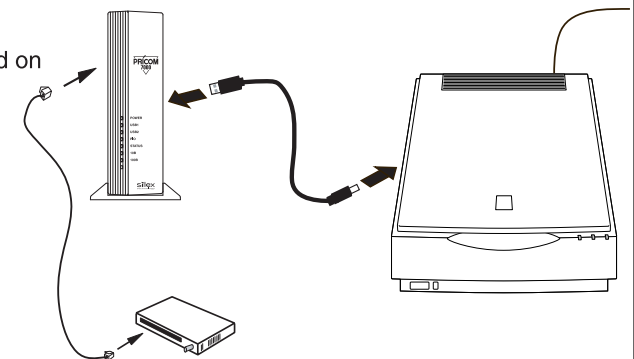
## 5 Connect the PRICOM to the Network

1. Plug the network cable into the PRICOM network port (10BASE-T/ 100BASE-TX) after plugging the AC adapter into the PRICOM.

2. Plug the other end of the network cable into the Ethernet HUB.

3. Verify that the PRICOM and the scanner power are switched on and LINK LED of the Ethernet Hub is blinking.

\* Using power supply other than the one supplied with the PRICOM may cause damages.



## 6 Starting User Software SX

\* The instruction here is based on the following environment.  
a) Your network environment has a DHCP server.  
b) The printer driver has been already installed in your client PC.

\* Explains how to configure PRICOM using Quick Setup.

\* For advanced configuration or configuration change, refer to "Chapter 7" of Users Manual.

\* Displayed screen may vary depending on the operating environment.

1. Please insert the **User Software SX** CD-ROM into the CD-ROM drive of your Windows PC.

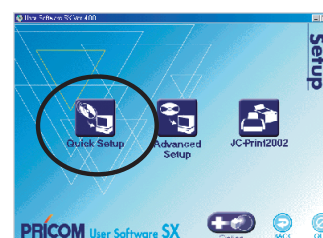
2. The main menu will appear automatically. Click **ReadMe**, then **Setup** after you confirm the contents.



<Main Menu>

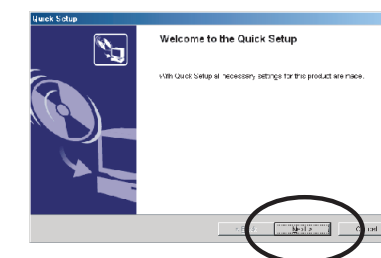
\* If the "Main menu" screen does not appear automatically, execute "autorun.exe" in the CD-ROM driver.

3. Click **Quick Setup**.



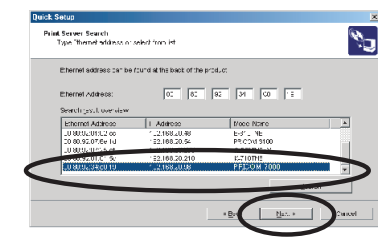
## 7 Quick Setup

1. **Quick Setup** starts. Click **Next**.



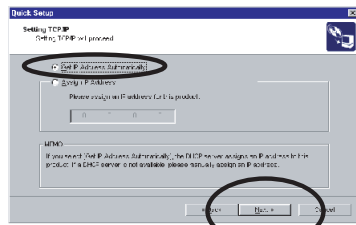
2. **Software License Agreement** will appear. Click **Yes** if you accept the contents.

3. Select the PRICOM you want to configure, then click **Next**.



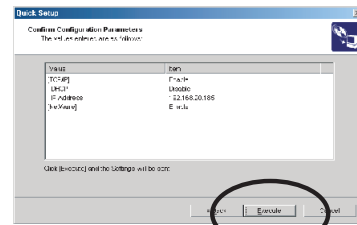
## 8 Installation of PRICOM USB Utility

4. Assign IP address to the PRICOM.  
Check **Get IP Address Automatically**, then click **Next**.

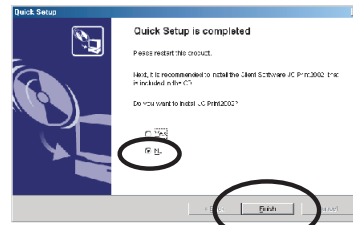


\* If you want to assign IP address manually, select **Assign IP Address**, then type the given IP address.

5. Verify the configuration parameters, then click **Execute**.



6. This completes the configuration.  
Check **No**, then click **Finish**.



PRICOM USB Utility can be installed only to Windows 2000 and Windows XP.

1. Click **Option**.



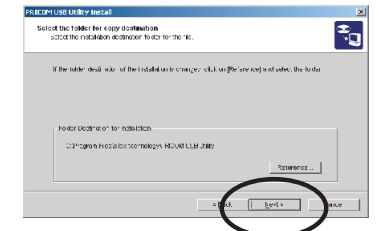
2. Click **PRICOM USB Utility**.



3. PRICOM USB Utility installer is started.

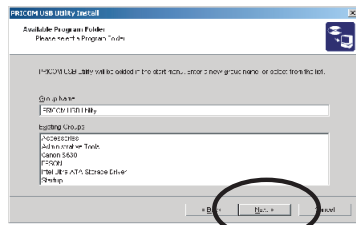
3. **Software License Agreement** will appear.  
Click **Yes** if you accept the contents.

4. **Select the folder for copy destination** will appear.  
Click **Next**.



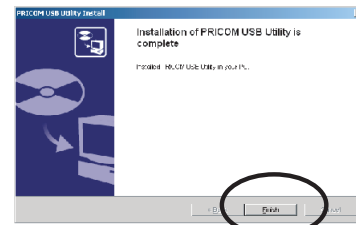
## 9 Activate PRICOM USB Utility

6. **Available Program Folder** will appear.  
Click **Next**.



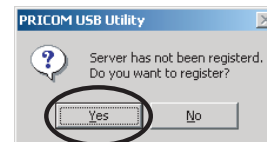
7. Click **Start**.  
Installation of PRICOM USB Utility is started.

8. Click **Finish**.

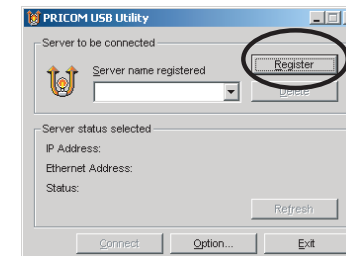


9. Exit User Software SX.

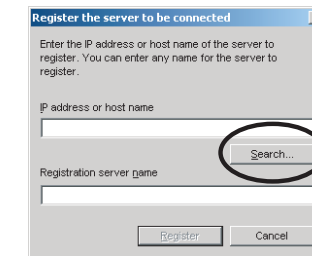
1. Click **Start-Programs**, then activate **PRICOM USB Utility**.  
Click **Yes**.



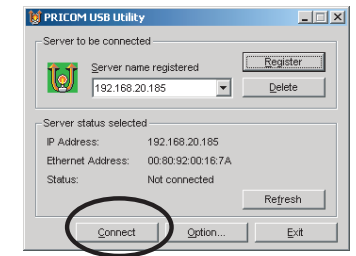
2. Click **Register**.



3. Click **Search** and select the PRICOM to be registered.

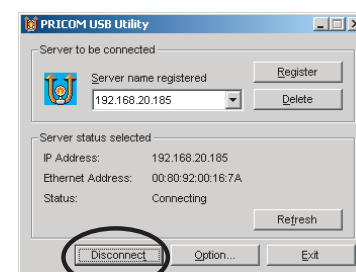


4. Connect your PC to the PRICOM.  
Click **Connect**.



5. Your PC and USB scanner has been connected over the network with the PRICOM. Activate the scanner's TWAIN utility to use it as a network scanner.

6. Disconnect the connection with the scanner when you complete the use.  
Click **Disconnect**.



\* The network communication with the scanner is continuously maintained for 10 minutes after the use of the network scanner, and then automatically disconnected when the network scanner is not used in the next 10 minutes.

\* If you frequently use the network scanner function, you can create a minimized icon in the task tray and enable the connection from the icon.

## 10 User Registration

- Make sure to complete the **User Registration** via our web page after the PRICOM setup.
- User Registration is recommendable for you to be provided better product support and service.

For User Registration

URL : <http://www.silex.jp/register/>

- For any technical questions,

On-line Support

E-mail : [support@silex.jp](mailto:support@silex.jp)

URL : <http://www.silex.jp/>