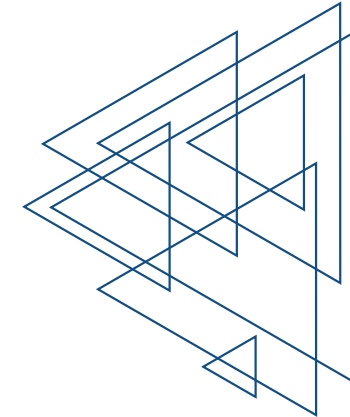


PRICOM 7000

Print Server Setup Guide

silex
technology
silex technology, Inc.
www.silex.jp

Dec, 2002
WA00730XX



PRICOM 7000
Setup Guide
Print Server



1 Introduction

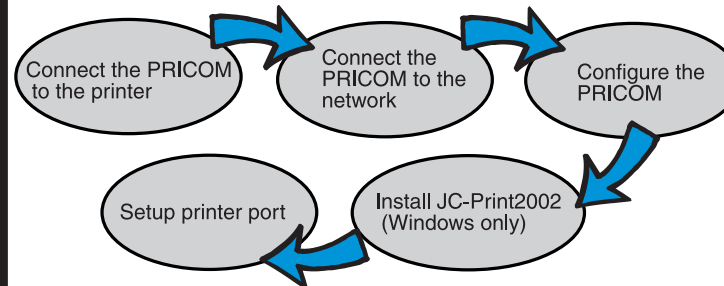
-This document describes the steps for installing and configuring PRICOM 7000 as a **Print Server** in Windows environments. Refer to the Users Manual recorded in the bundled CD-ROM for more details.

-This Setup Guide is for Windows users.

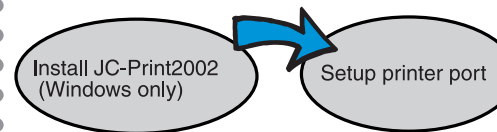
*If you use PRICOM 7000 in UNIX/Linux, please refer to the manual in the CD-ROM.

2 Steps for Initial Installation and Configuration

-For Administrators

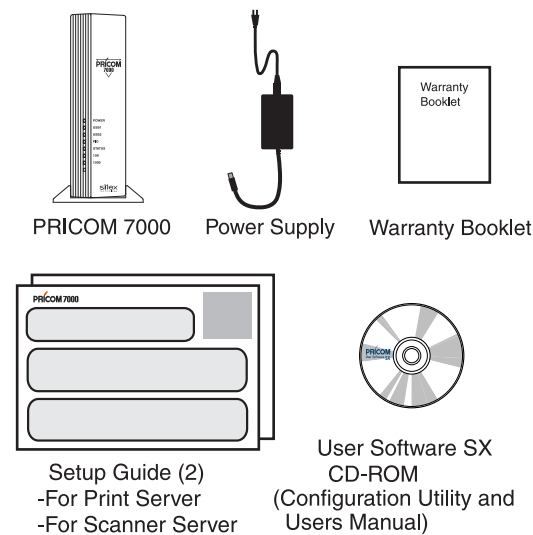


-For Clients

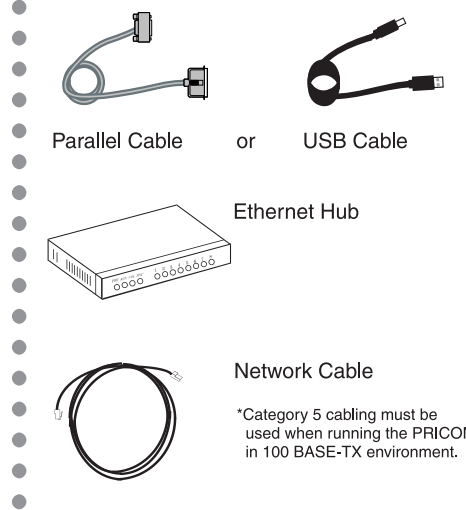


3 Package Contents

-Carefully remove all items from the box.



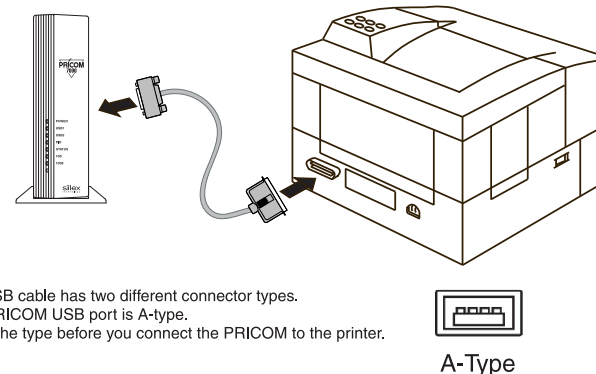
-The following items are not included in the box. These may be purchased separately.



4 Connect the PRICOM to the Printer

- Switch off the printer power, disconnect the power cord and then plug the PRICOM to the printer with applicable cable for your printer interface. Make sure that the power supply is not connected to the PRICOM at this point.

*You can plug any USB device with the PRICOM without shutting down the power of the connected printer because of the USB Hot Plug feature.

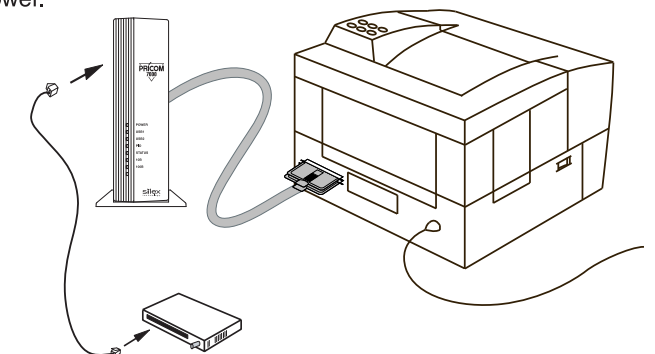


* The USB cable has two different connector types. The PRICOM USB port is A-type. Verify the type before you connect the PRICOM to the printer.

5 Connect the PRICOM to the Network

1. Make sure that the power supply is not plugged into the PRICOM. Make sure that the printer power is switched off, then plug the network cable into the PRICOM network port. (10BASE-T/100 BASE-TX)
2. Plug the other end of the network cable into the Ethernet HUB.
3. Plug the power supply into the PRICOM, then switch on the printer power.

* Using power supply other than the one supplied with the PRICOM may cause damages.



6 Starting User Software SX

* The instruction here is based on the following environment.
a) Your network environment has a DHCP server.
b) The printer driver has been already installed in your client PC.

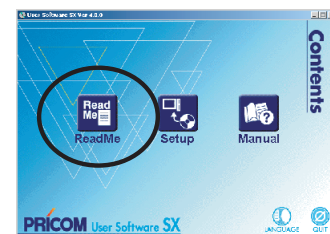
* Explains how to configure PRICOM using Quick Setup.

*For advanced configuration or configuration change, refer to "Chapter 7" of Users Manual.

*Displayed screen may vary depending on the operating environment.

1. Please insert the **User Software SX** CD-ROM into the CD-ROM drive of your Windows PC.

2. The main menu will appear automatically. Click **ReadMe**, then **Setup** after you confirm the contents.



<Main Menu>

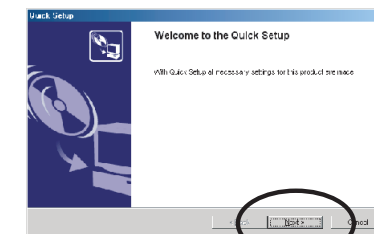
- * If the "Main menu" screen does not appear automatically, execute "autorun.exe" in the CD-ROM driver.

3. Click **Quick Setup**.



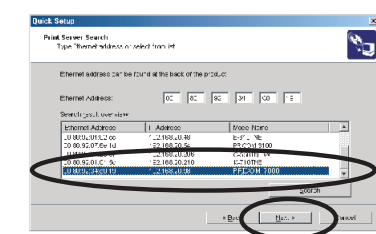
7 Quick Setup

1. Quick Setup starts. Click **Next**.



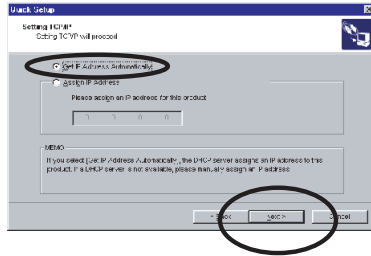
2. **Software License Agreement** will appear. Click **Yes** if you accept the contents.

3. Select the PRICOM you want to configure, then click **Next**.



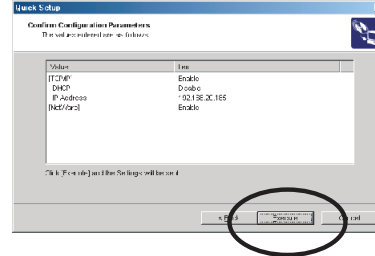
8 JC-Print2002 Installation

- Assign IP address to the PRICOM.
Check **Get IP Address Automatically**, then click **Next**.

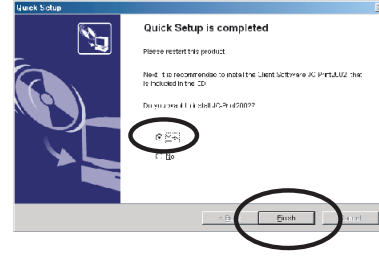


* If you want to assign IP address manually, select **Assign IP Address**, then type the given IP address.

- Verify the configuration parameters, then click **Execute**.



- This completes the configuration.
Check **Yes**, then click **Finish**.



JC-Print2002 installer starts.

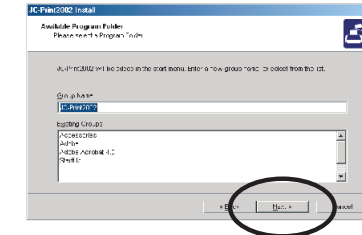
- JC-Print2002 installation explains for **Printing with LPR**. If you select a different mode, refer to the PRICOM manual.

- JC-Print2002 installer starts.
Click **Next**.

- Software License Agreement** will appear.
Click **Yes** if you accept the contents.

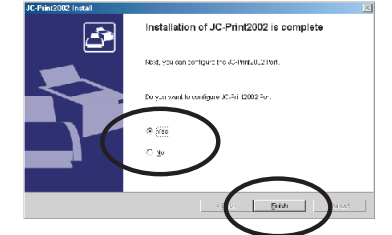
- Select the folder for copy destination** will appear.
Click **Next**.

- Available Program Folder** will appear.
Click **Next**.

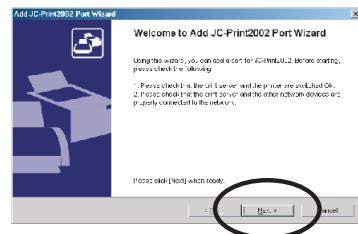


- Click **Start** and JC-Print2002 installation will start.

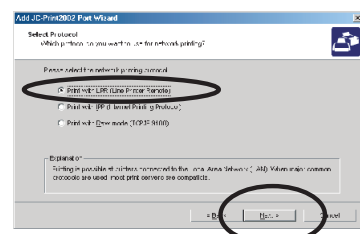
- Click **Yes**, then click **Finish**.



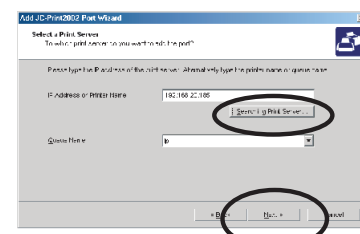
- Add JC-Print2002. Click **Next**.



- Check **Print with LPR**, then click **Next**.

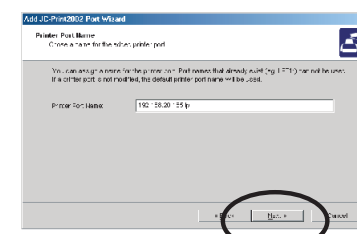


- Click **Searching Print Server**, then select the PRICOM and click Next.

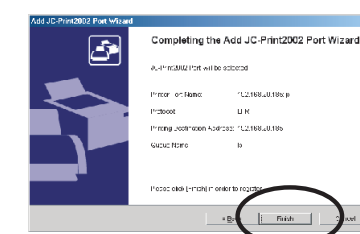


* Queue name is as follows.
Select [lp] for the parallel cable connection.
Select [lp_u1]-[lp_u4] for the USB cable connection.

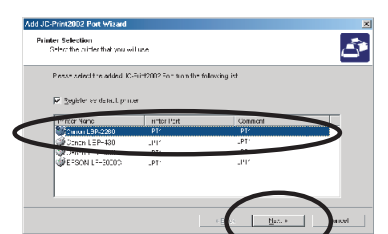
- Allocate **Printer Port Name**.
Click **Next**.



- Click **Finish** and port addition is complete.



- Select the printer that uses the newly added port.
Click **Next**.



- Port configuration is complete.
Click **Finish**.

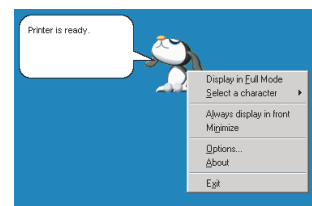
9 PRICOM Monitor SX

PRICOM Monitor SX monitors the printer status and allows you to monitor the status on the desktop at all times.

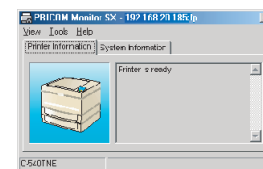
* Pricom Monitor SX is installed simultaneously with JC-Print 2002.

<How to Activate PRICOM Monitor SX>
Click **Start-Programs-JC-Print2002** (or designated group name), then activate **PRICOM Monitor SX**.

- <Displayed Contents>
Printer error, Printing, Papers empty
- * The displayed contents vary depending on the printer you use.
- * You can select either character mode or full mode.



<Character Mode>



<Full Mode>

10 User Registration

- Make sure to complete the **User Registration** via our web page after the PRICOM setup.
User Registration is recommendable for you to be provided better product support and service.

For User Registration

URL : <http://www.silex.jp/register/>

- For any technical questions,

On-line Support

E-mail : support@silex.jp

URL : <http://www.silex.jp/>