

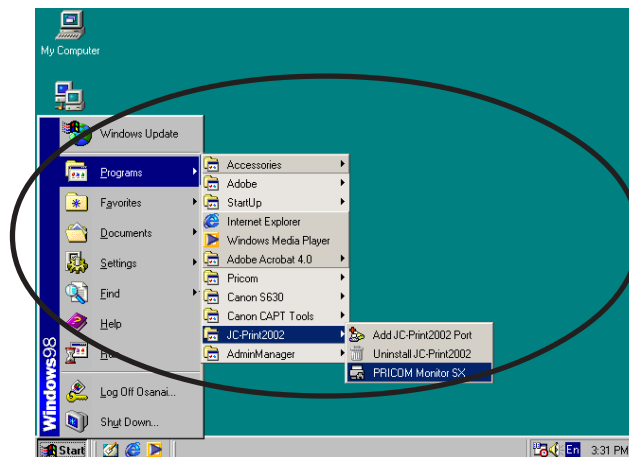
8. PRICOM Monitor SX

About PRICOM Monitor SX

PRICOM Monitor SX (Pop-up Printer Status Monitor) displays printer status on your PC screen. PRICOM Monitor SX resides on your PC screen and monitors printer status at real time.

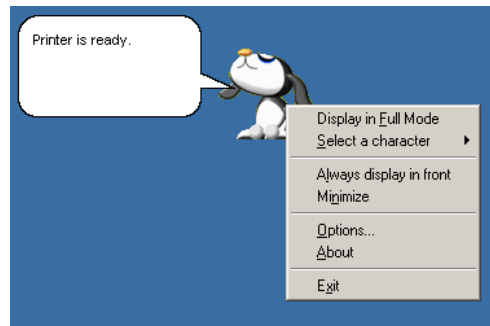
Starting PRICOM Monitor SX

Click **Start**, then **Programs**, then **JC-Print2002** (or a name specified optionally), then **PRICOM Monitor SX**.



Display PRICOM Monitor SX (character mode)

Printer status will be displayed by character and balloon.



-Character

Displays printer status by animation.



NOTE

-You can select a character to be used among the four characters.

-Status Message (balloon)

Displays printer status by words.

[Printing]

[Busy]

[Ready]



NOTE

-You can close the balloon by clicking the balloon. You can display balloon by left-clicking the character.

Menu Structure

Menu bar will be displayed by right-clicking the character; the following options are available.

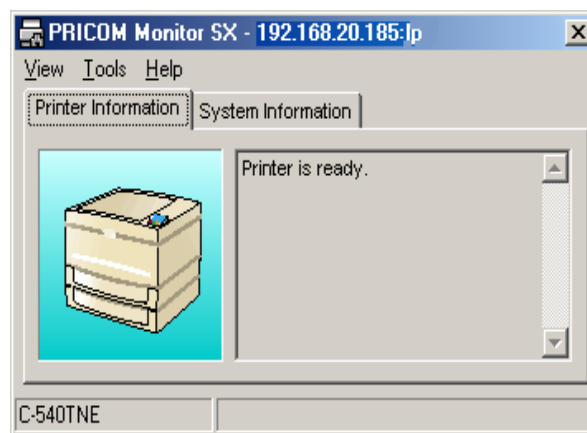
| Item | Description |
|--------------------------|---|
| Displays in full mode | Displays printer status by windows. |
| Selects character | Switches the character to be displayed. You can select a character to be displayed among the four characters. |
| Always displays in front | Always displays PRICOM Monitor SX in front. However, when other windows set to be displayed in front, PRICOM Monitor SX is displayed on the back of the window. |
| Minimize | Minimize the window. To back to the original size, click the icon in task bar. |
| Option Configuration | Displays option configuration dialogue. |
| Version Information | Displays version information. |
| Finish | Finishes PRICOM Monitor SX. |

Display PRICOM Monitor SX (Full Mode)

You can display the printer detailed information by standard windows.

Printer Information

Displays printer status and printing status.



-Status Message

Displays printer status by words.

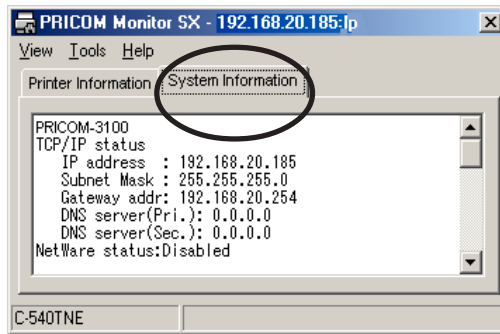
-Model

Displays PRICOM model.

-Transmission Status

Displays print data transmission status.

System Information



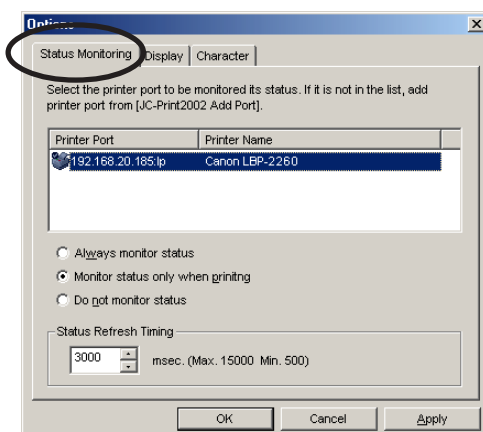
Menu Structure

| Menu | Item | Description |
|---------|-----------------------------------|---|
| Display | Displays in character mode | Displays printer status by character and balloon. |
| | Always displays in front | Always displays PRICOM Monitor SX in front. However, when other windows set to be displayed in front, PRICOM Monitor SX is displayed on the back of the window. |
| | Minimize | Minimize the window. To back to the original size, click the icon in task bar. |
| | Finish | Finishes PRICOM Monitor SX. |
| Utility | Option Configuration | Displays option configuration dialogue. |
| Help | Version Information | Displays version information. |

Option Configuration Dialogue

You can specify the condition of PRICOM Monitor SX. Click **Option** when using the monitor in character mode or full mode.

Status Monitoring



-JC-Print2002 Port List

The list of JC-Print2002 port registered in your PC will be displayed. Select the product you want to monitor from the list.



TIP

-LPR port and Raw (9100) port are displayed in the JC-Print2002 port list. IPP port is not displayed.

-Always monitor the printer status

The printer status can be constantly monitored by having the monitor reside in the system.

-Monitor the printer status only while printing

You can monitor the printer status only while printing by JC-Print2002 port. When the printing data transmission is complete by JC-Print2002 port, the status monitoring window is automatically deactivated

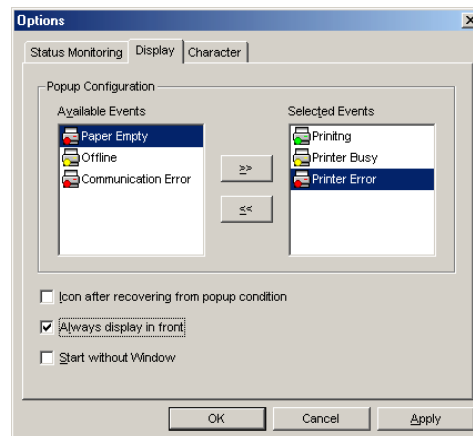
-Disable the printer status monitoring

The printer status monitoring is disabled. To reactivate the printer status monitoring function, you need to restart the PRICOM Monitor SX each time.

-Status refresh interval setting

You can configure the interval time to refresh the printer status information.

Display



-Available Events

List of events which PRICOM Monitor SX can display.

-Event selected

This list shows the events selected to be displayed in PRICOM Monitor SX.

PRICOM Monitor SX to be displayed when the printer status coincide with the events confired here.

-Add the items in Available Events to Events selected.

-Return the items in Event selected to Available Events.

-Iconize after recovering from popup conditions.

PRICOM Monitor SX will be minimized and resided in task bar after printer event is closed.

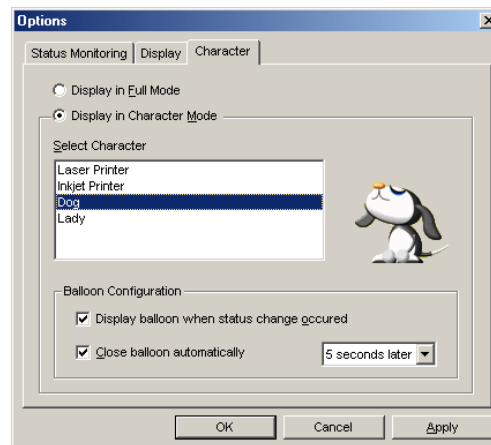
-Always display on top.

PRICOM Monitor SX is always dieplayed on top. When other windows set to be displayed on top, PRICOM Monitor SX is displayed on the back of the window. (Default: On)

-Activated with minimized.

Activate PRICOM Monitor SX with minimized. (Default: Off)

Character



-Displays in full mode

Displays printer status by standard window screen.

-Displays in character mode

Displays printer status by the character selected with balloon.

-Selects character

Character selected informs you of printer status.

-Displays printer status in the balloon

Printer status will be described in the balloon when printer status change occurs.

-Close the character automatically

You can close the character automatically. You can also specify the time interval from displaying to closing the character. (Default: 5 seconds)