

8. Functions for Configuration

This chapter explains how to configure options in details by using AdminManager, Web browser or TELNET.

Configuration by Using AdminManager

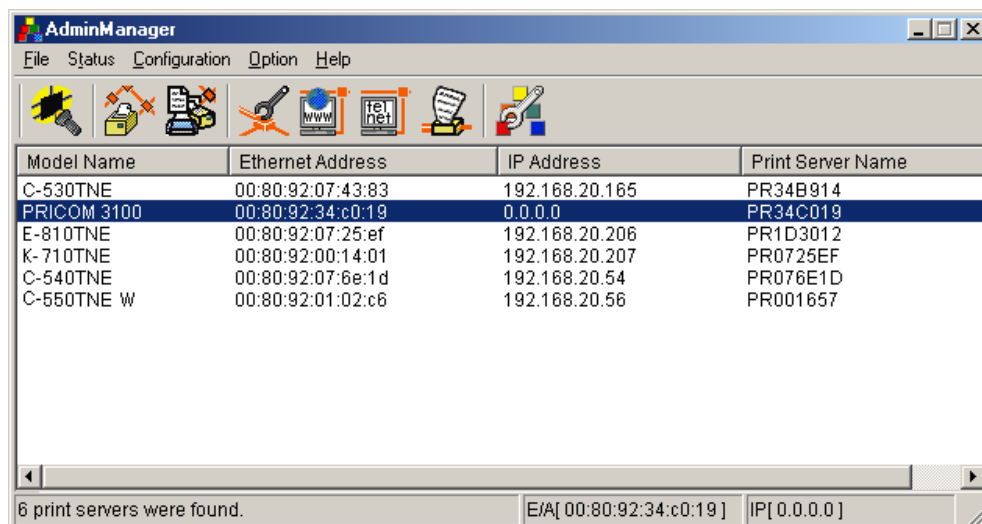
By using AdminManager, you can specify or modify PRICOM detail configuration. AdminManager also has convenient additional features such as, remote rebooting, self-diagnostic printing, printer status monitoring and NetWare queuing wizard.



-Remote rebooting and remote self-diagnostic printing may not be available on some PRICOM models.

-To use AdminManager, TCP/IP or IPX/SPX protocol must have been installed on your PC. Contents displayed on the AdminManager may vary depending on PRICOM you use.

-When you use TC/IP protocol in Windows XP, click **Local Area Connection Properties**, then **Advanced**, then remove the check from **Protect my computer and network by limiting or preventing access to this computer from the Internet**.



Model Name	Ethernet Address	IP Address	Print Server Name
C-530TNE	00:80:92:07:43:83	192.168.20.165	PR34B914
PRICOM 3100	00:80:92:34:c0:19	0.0.0.0	PR34C019
E-810TNE	00:80:92:07:25:ef	192.168.20.206	PR1D3012
K-710TNE	00:80:92:00:14:01	192.168.20.207	PR0725EF
C-540TNE	00:80:92:07:6e:1d	192.168.20.54	PR076E1D
C-550TNE W	00:80:92:01:02:c6	192.168.20.56	PR001657

6 print servers were found. E/A[00:80:92:34:c0:19] IP[0.0.0.0]

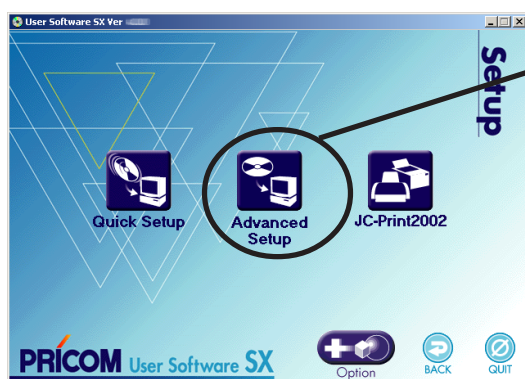
Starting AdminManager

1. Insert the User Software SX in the CD-ROM drive. The main menu screen will be displayed.



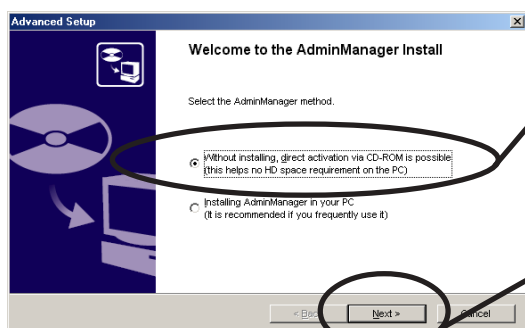
Click **Setup**.

2. The below screen will be displayed.



Click **Advanced Setup**.

3. Installation confirmation screen will be displayed.



Select ***Without installing, direct activation via CD-ROM is possible.***

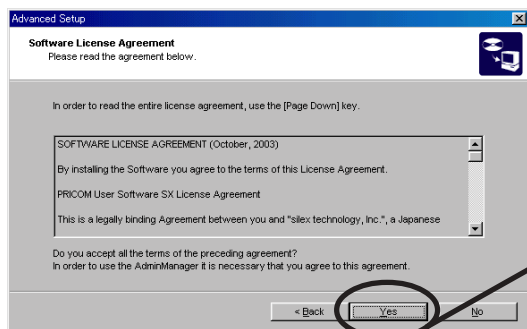
Click **Next**.



NOTE

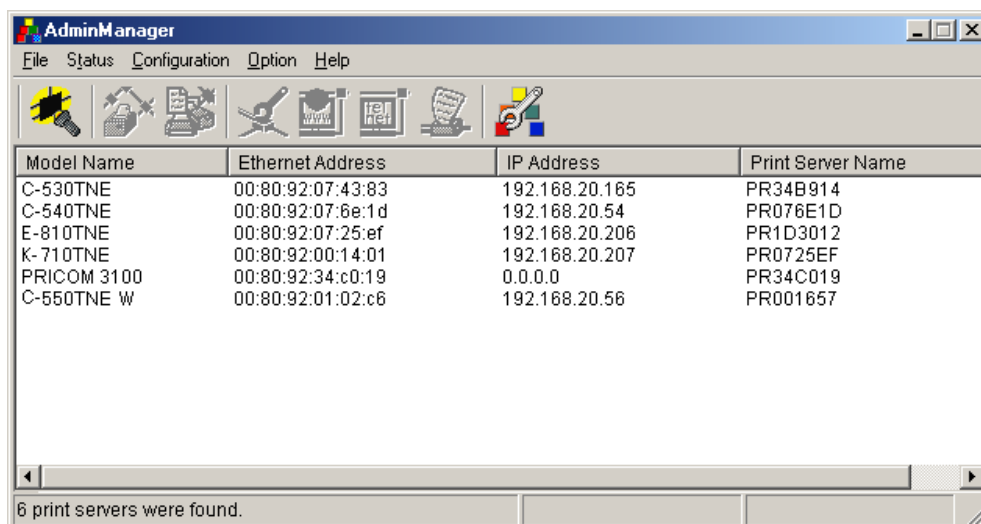
-If you intend to use the AdminManager frequently, select ***Installing AdminManager in your PC.***

4. Confirm the Software License Agreement.



Read the agreement and click **Yes** if you accept it.

5. AdminManager will start.



Searching PRICOM Using AdminManager

Before setting up PRICOM, verify that it can be discovered by AdminManager. If not, select Settings, then assign an IP address.

Assigning an IP address

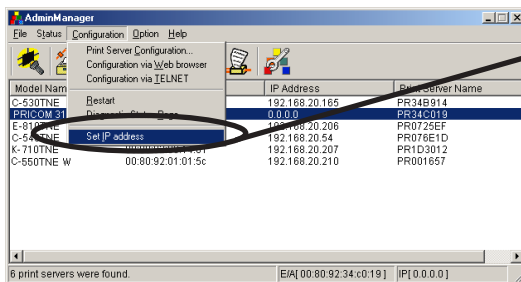
Assign an IP address manually.



NOTE

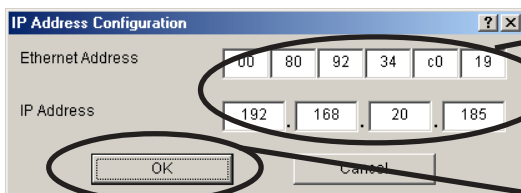
-Before assigning an IP address, verify PRICOM Ethernet address. The address can be found on the self-diagnostic print sheet. (e.g. 00:80:92:34:c0:19)

1.



On the AdminManager menu bar, select **Settings**, then **Set IP address** to start IP address configuration tool.

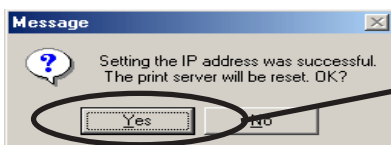
2.



Enter Ethernet address and IP address of PRICOM to be configured.

Click **OK**.

3.



To validate the IP address, reset PRICOM.



TIP

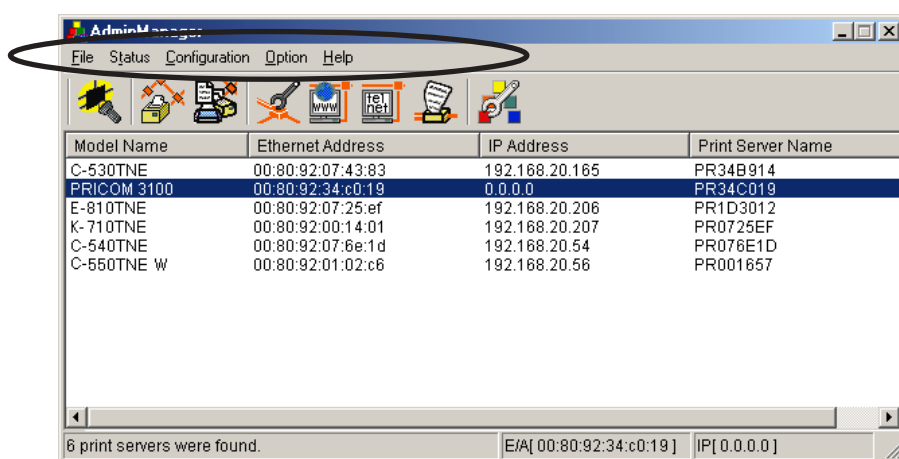
-Restart process of AdminManager may not work depending on printer type. In that case, switch off and on the printer power.

Functions of AdminManager

AdminManager menu structure



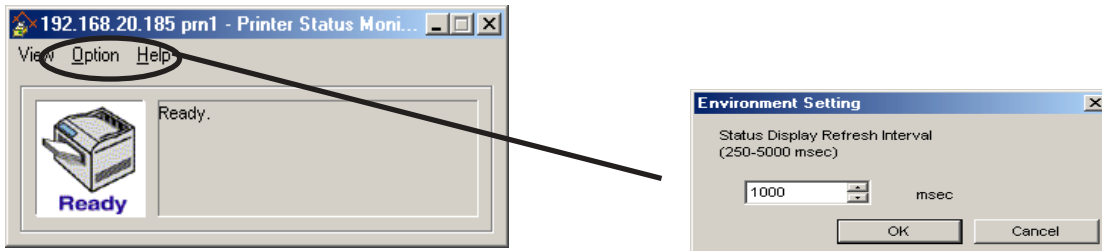
-The menu options displayed on AdminManager may vary depending on the model or operating environment.



Menu	Item	Explanation
File	Search	Search PRICOM in the network
	Exit	Quit the AdminManager
Status	Printer Status	Display the system status monitor
	System Status	Display the printer status monitor
	Configuration summary	Display PRICOM internal configuration information
Configuration	Print Server Configuration	Configure various parameters of PRICOM
	Configuration via Web browser	Start PRICOM Web site
	Configuration via TELNET	Start TELNET
	Restart	Restart PRICOM
	Diagnostic Status Page	Start PRICOM self-diagnostic print
	Set IP address	Manually assign the IP address
Option	Search using TCP/IP Protocol	Search PRICOM using TCP/IP
	Search using IPX/SPX Protocol	Search PRICOM using IPX/SPX
	Environment Setting	Configure AdminManager environment
Help	About	Display AdminManager version

Printer status

You can monitor the status of printer connected to PRICOM by AdminManger. You can also specify the refresh time of printer status on the environment configuration screen.



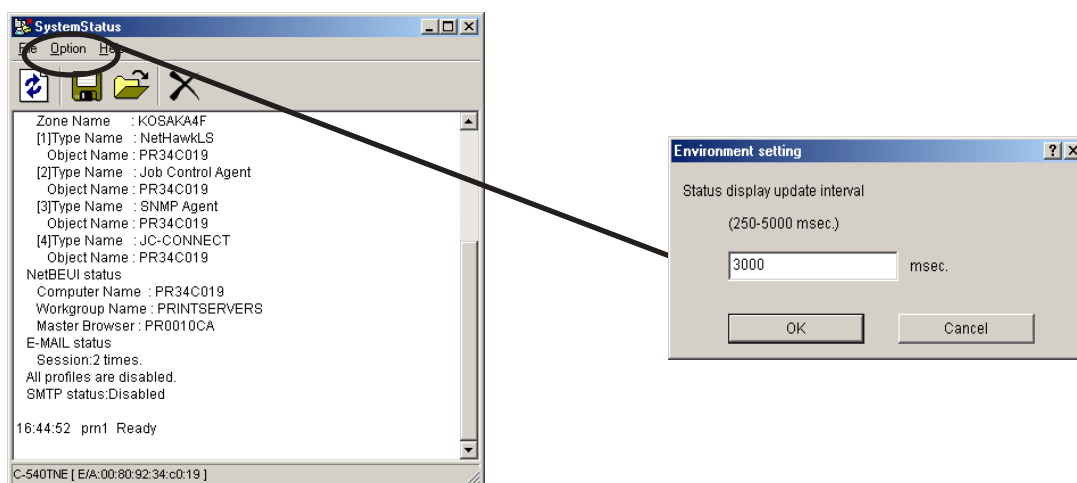
Printer status environment configuration.



-Printer status may not be obtained properly depending on the printer model.

System status

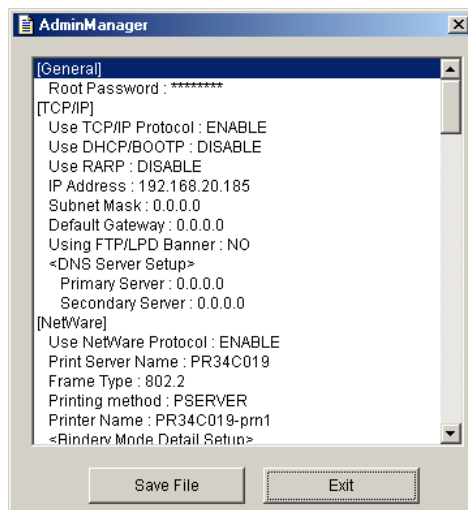
Operating status of the PRICOM selected on AdminManager screen is displayed. The operating status can be saved onto a file (log registration) and referenced later. You can also specify the refresh time of printer status on the environment configuration screen.



-The displayed contents may vary depending on the PRICOM you use.

Configuration Parameters List

The list of PRICOM configuration parameters will appear. These configuration can be printed to file and managed.

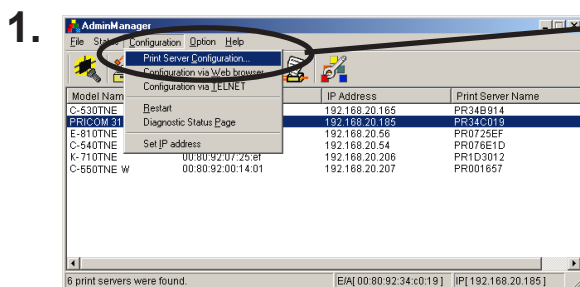


-The displayed contents may vary depending on PRICOM you use.

Configuring PRICOM Using AdminManager

Configuring Print Server

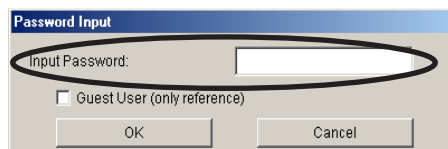
Click **Settings**, then **Print Server Configuration** for PRICOM detail configuration and modification of the configuration.



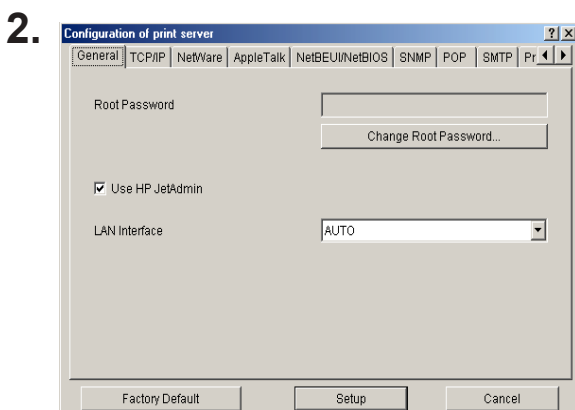
Choose PRICOM to be configured and then click **Settings**, then **Print Server Configuration** in the AdminManager menu bar.



- When PRICOM is protected with the password, password input screen will be displayed.
- By checking **Guest user**, you can view configuration parameters, but cannot change the information.



Password input screen

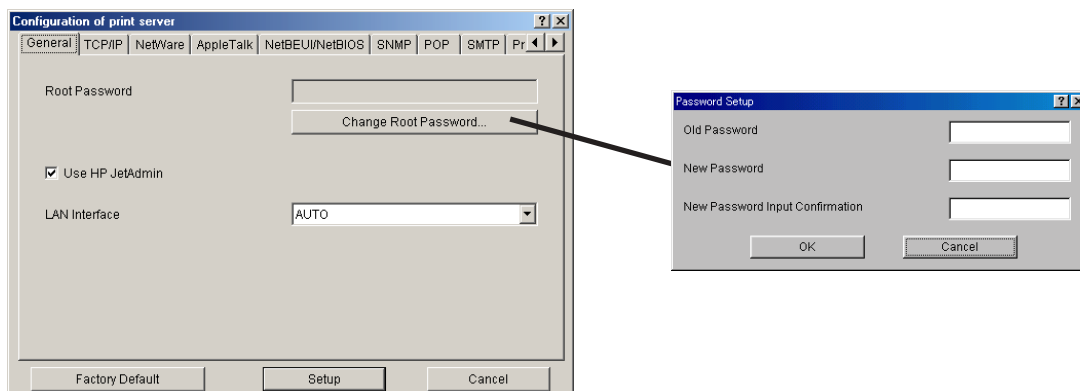


The screen shown left will be displayed. Select the tab you want to configure.



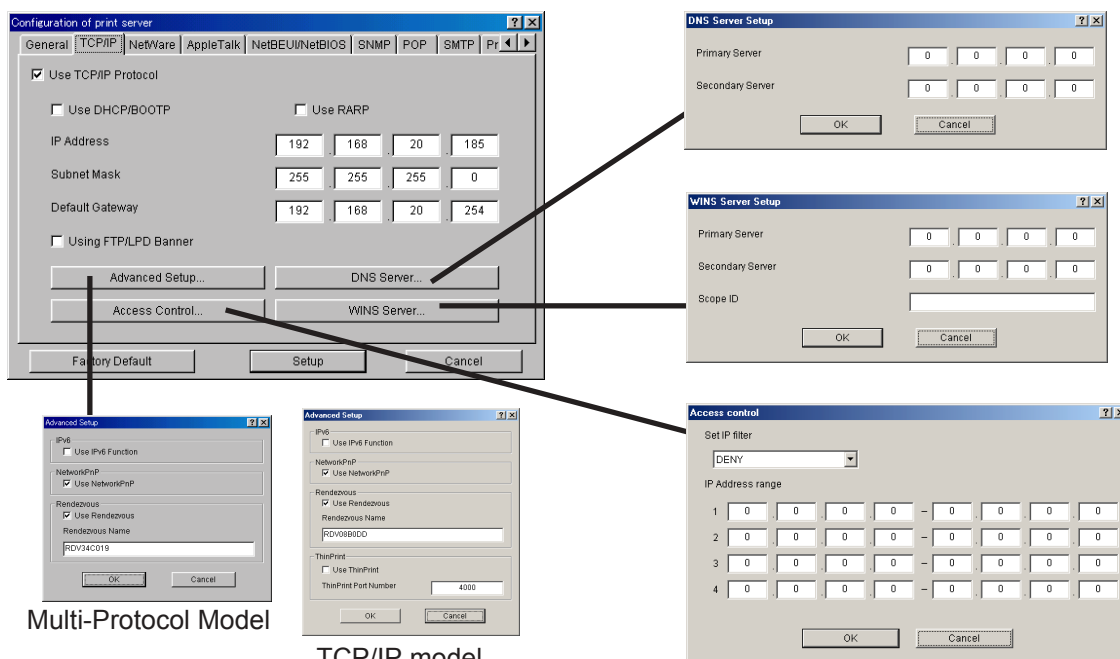
- The displayed tab may vary depending on PRICOM you use.
- Use the scroll button to view remaining tabs, if any.

General Configuration



Tab	Item	Explanation	Factory Default
General	Root Password	Please enter the password in ASCII TEXT (up to seven (7) character). This password will be used for configuration changes via AdminManager, Telnet, Web page.	-
	Change Root Password	The input screen for root password opens.	-
	Use HP JetAdmin	Please select whether you want to use HEWLETT PACKARD's JetAdmin/WebJetAdmin.	ENABLE
	LAN Interface	Please select the network speed. It is recommended to select "AUTO". If you select "AUTO", the network speed will be detected automatically. If the HUB did not link when you switched on your print server (you can check the HUB's LINK LED), please try a different network speed manually.	AUTO

TCP/IP Configuration



Multi-Protocol Model

TCP/IP model

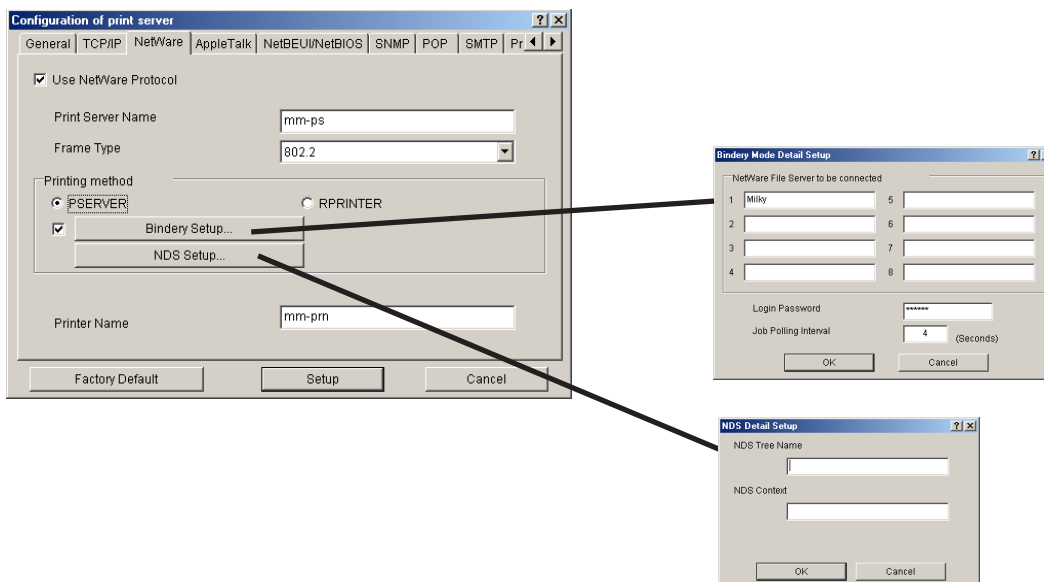
Tab	Item	Explanation	Factory Default
TCP/IP	Use TCP/IP Protocol	Enable/Disable TCP/IP protocol operations. This has influence on the configuration of Setup Tools, LPR, FTP, TELNET, SNMP, HTTP and other protocols over TCP/IP.	ENABLE
	Use DHCP/BOOTP	Enable/Disable DHCP/BOOTP protocol operations. DHCP/BOOTP is a protocol, via which IP address gets assigned by the BOOTP server or DHCP server. If you use DHCP/BOOTP server, the DHCP/BOOTP server must be in the same segment as the print server. This print server detects DHCP and BOOTP automatically. If more than 1 address get returned, the IP address which is returned first will be used.	ENABLE
	Use RARP	Enable/Disable RARP protocol operations. RARP is a protocol, via which IP address gets assigned by the RARP server. If you use RARP server, the RARP server must be in the same segment as the print server.	ENABLE
	IP Address	Setting the Print Server IP address. The IP address must be 4 numbers, each between 0-255 (eg. 192.168.100.10).	0.0.0.0
	Subnet Mask	Setting the print server subnet mask. The subnet mask must be 4 numbers, each between 0-255 (eg. 255.255.255.0). However, entering 0.0.0.0 would not be valid, and the subnet mask corresponding to the IP address would be used automatically.	0.0.0.0

Tab	Item		Explanation	Factory Default
TCP/IP	Default Gateway		Setting the default gateway address. The default gateway address must be 4 numbers, each between 0-255 (eg. 192.168.100.240). If you use a gateway, the gateway must be in the same segment as the print server. However, entering 0.0.0.0 would not be valid.	0.0.0.0
	Use FTP/LPD Banner		You can select to use a banner page when printing with LPR and FTP. (A banner page is print cover page with print job explanations.)	DISABLE
	DNS Server	Primary Server	Setting the DNS server (primary) address. When POP/SMTP server name is configured directly at IP address, the DNS server's setting is not necessary. The values must be 4 numbers, each between 0-255 (eg. 192.168.100.10)	0.0.0.0
		Secondary Server	Setting the DNS server (secondary) address. When POP/SMTP server name is configured directly at IP address, the DNS server's setting is not necessary. The values must be 4 numbers, each between 0-255 (eg. 192.168.100.10).	0.0.0.0
	WINS Server	Primary Server	Setting the WINS server (primary) address. WINS server will resolve the IP address from the host name. Therefore you can use a hostname instead of the IP address when printing. The values must be 4 numbers, each between 0-255 (eg. 192.168.100.10).	0.0.0.0
		Secondary Server	Setting the WINS server (secondary) address. WINS server will resolve the IP address from the host name. Therefore you can use a hostname instead of the IP address when printing. The values must be 4 numbers, each between 0-255 (eg. 192.168.100.10).	0.0.0.0
		Scope ID	The scoop ID defines the computer group that recognized the registered host name.	-

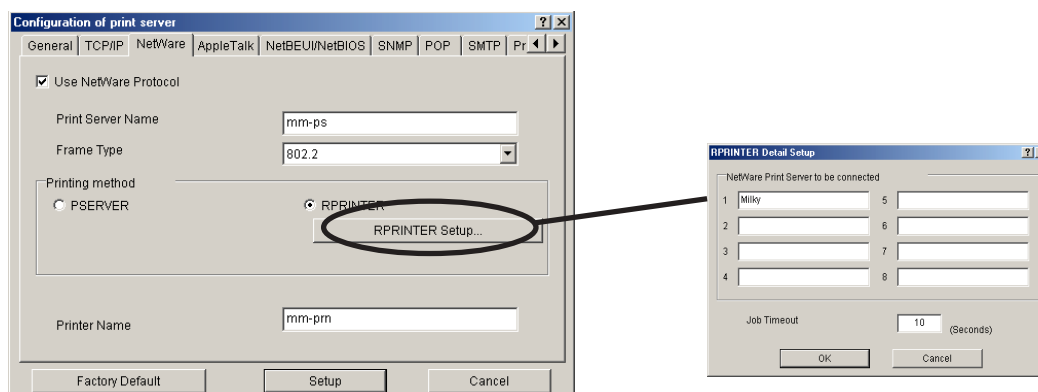
Tab	Item		Explanation	Factory Default
TCP/IP	Advanced Setup	Use IPv6 Function	Enable IPv6 if you use IPv6.	DISABLE
		Use NetworkPnP	Enable NetworkPnP if you use NetworkPnP.	ENABLE
		Use Rendezvous	Enable Rendezvous if you use Rendezvous.	ENABLE
		Rendezvous Name	Specify a Rendezvous name.	"RDVxxxxxx" (xxxxxx is the last 6 figures of the Ethernet address)
		ThinPrint	Enable/Disable ThinPrint operations. (Only TCP/IP model)	ENABLE
		ThinPrint Port Number	Configure the port number to use ThinPrint. (Only TCP/IP model)	4000
	Access control	Set IP filter	Setting of IP filter operations. Available options are "allow" and "deny". If you select "allow", only the data from the set IP address range are accepted. If you select "deny", the data from the set IP address range can not be received.	DENY
		IP Address range	Setting IP filter range. IP addresses to be filtered can be set to maximum 4 address ranges. If address range setting is not required, please enter the address range from "0.0.0.0" to "0.0.0.0".	0.0.0.0

NetWare Configuration

Operation mode: PSERVER



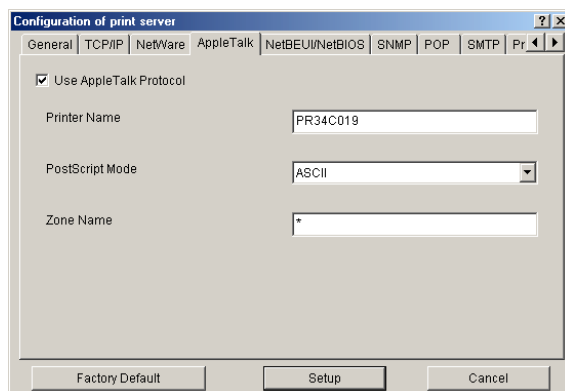
Operation mode: RPRINTER



Tab	Item	Explanation	Factory Default		
NetWare	Use NetWare Protocol	Enable/Disable NetWare protocol.	ENABLE		
	Print Server Name	Specify the print server name for the print server when starting in PSERVER mode. Because this configuration is used as the identifier on the network in the NetWare protocol, the print server name set must be different from other names in the NetWare environment. It is used as a login name in connecting to the NetWare server.	PRxxxxxx (Lower 6 digits of Ethernet address)		
	Frame Type	Select the default frame type of the print server. If the set frame type does not work, it will be changed to a different frame type automatically.	802.2		
		Select the primary operation mode (PSERVER mode / RPRINTER mode) of the print server. If the set mode does not work, the print server starts in a different mode.	Print server		
	Printing method	Send the job via NetWare			
		Bindery Setup	NetWare File Server to be connected	Set the name of the file server primarily connected to. The print server logs into the file server set here when operating in PSERVER mode. The print server searches the file server automatically and logs in if the value is blank.	-
			Login Password	Set the password that is authenticated when the print server logs into the file server as a PSERVER mode. When the password is set for the print server, the same password must be set to the corresponding file server. If the print server is connected to two or more file servers, the same password must be set to all the file servers.	-
			Job Polling Interval	Set the interval for the print server to query the file server for jobs in units of seconds. Usually the value should be the default.	4
		NDS Setup	NDS Tree Name	Specify the name of the NDS tree connected to. Because the tree name is obtained automatically, it is usually unnecessary to specify it here. When there are two or more trees on the same network it is necessary to specify the name here.	-
			NDS Context	Specify the NDS context connected to in PSERVER mode. The context which created the print server on the file server should be specified here.	-

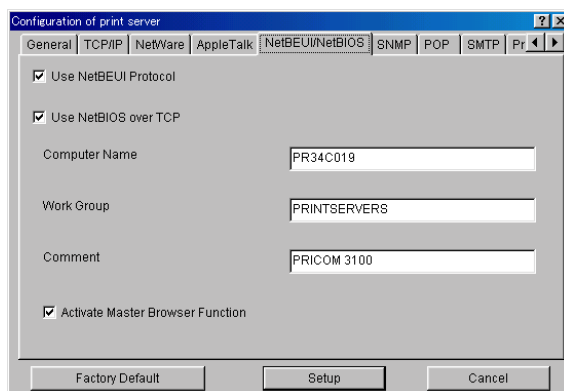
Tab	Item		Explanation		Factory Default
NetWare	Printing Method	Job management can be performed via NetWare server.			
		RPRINTER Setup	NetWare Print Server to be connected	Set the name of the print server primarily connected to. This product connects to the print server set here when operating in RPRINTER mode. This product searches print server automatically and connects if the value is blank.	-
			Job Timeout	Set the timeout value (in units of seconds) for the print server to determine the end of the job when operating in RPRINTER mode. Usually the value should be the default.	10
	Printer Name		Set the printer name under print server information within the NetWare server. It must be the same as the "Printer Name" registered in the NetWare server.		PRxxxxxx-Prn1 (Lower 6 digits of Ethernet address)

AppleTalk Configuration



Tab	Item	Explanation	Factory Default
AppleTalk	Use AppleTalk Protocol	Enable/ Disable AppleTalk Protocol operations.	ENABLE
	Printer Name	Set the AppleTalk printer name. The name set here can be seen in the Chooser. The special symbols in AppleTalk protocol ("="; ":"; "@" and "*") must be excluded from the string.	PRxxxxxx (Lower 6 digits of Ethernet address)
	PostScript Mode	When the PostScript printer supports binary mode, PostScript data can be sent in binary. Select BCP or TBCP in accordance with the mode of your printer. Use TBCP when PS binary data is printed by a particular printer. Select ASCII (default) when a printer other than a PostScript one is connected.	ASCII
	Zone Name	The print server sets the zone name where it belongs. If the value is blank, this product will belong to the default zone, set in the AppleTalk Router within the network.	*

NetBEUI/NetBIOS Configuration

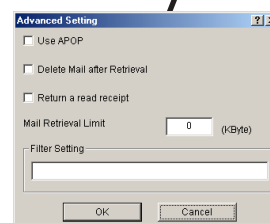
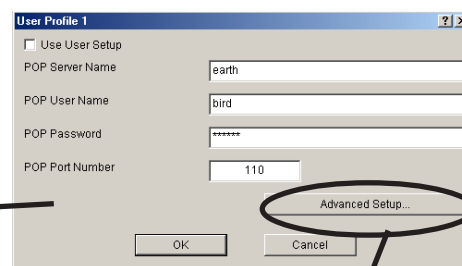
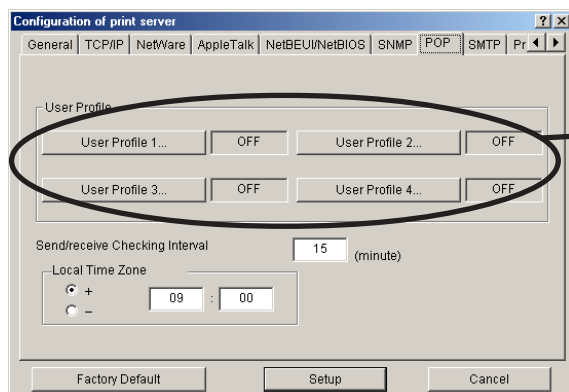


Tab	Item	Explanation	Factory Default
NetBEUI/ NetBIOS	Use NetBEUI Protocol	Enable/ Disable NetBEUI protocol operations.	ENABLE
	Use NetBIOS over TCP	Enable/ Disable NetBIOS over TCP operations.	ENABLE
	Computer Name	Specify a computer name. The name set here is shown as a computer in Windows Explorer. The name must be different from those of other computers.	PRxxxxxx (Lower 6 digits of Ethernet address)
	Work Group	Specify the workgroup that this print server belongs to. Enter the default workgroup name or an existing workgroup name. A new workgroup name that does not exist in the network is not shown as Workgroup.	PrintServers
	Comment	Set the description of the print server. The information set here is shown as the description (comments) of the print server in Windows Explorer.	PRICOM XXXXX
	Activate Master Browser Function	In NetBEUI or NetBIOS over TCP, you can specify whether to activate the master browser function.	ENABLE

SNMP Configuration

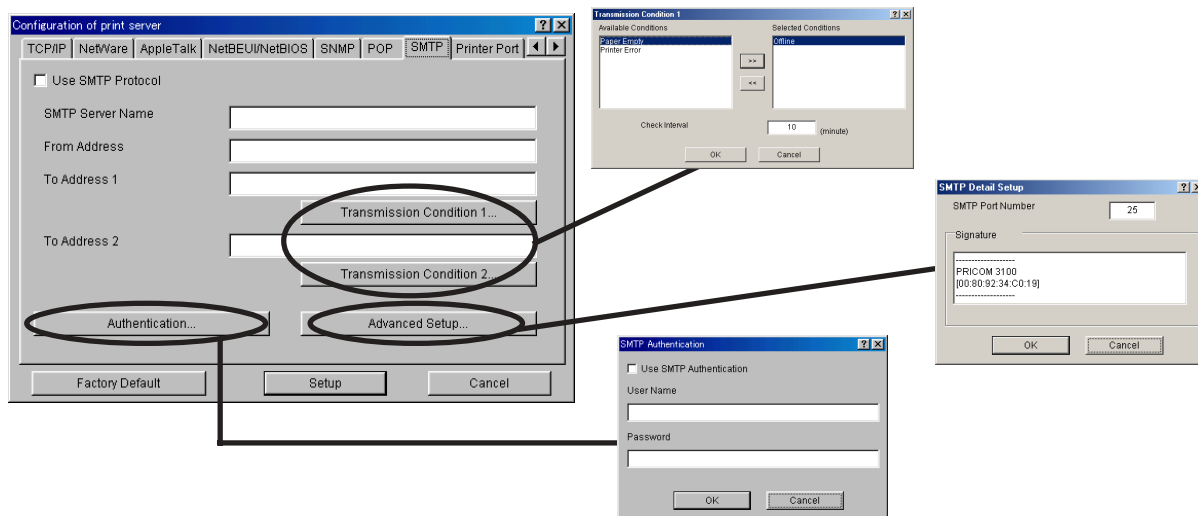
Tab	Item	Explanation	Factory Default	
SNMP	Authentication community	Specify the authentication community name of SNMP. This community name is authenticated when an SNMP set request is received.	public	
	Trap Community	Specify the trap community of SNMP. This community name is used when the print server send a trap.	public	
	Trap Destination Address	Specify the destination IP address of the SNMP trap. The value is a four-part series of numbers separated by decimal points, such as "xxx.xxx.xxx.xxx". When the value is "0.0.0.0"(default), this item is disabled and a trap will not be generated in any case.	0.0.0.0	
	MIB-II Parameters	SysContact	Specify the SysContact of the MIB-II object. The e-mail address of the network administrator is used.	-
		SysName	Specify the SysName of the MIB-II object. The host name or domain name of the print server is used.	-
		SysLocation	Specify the SysLocation of the MIB-II object. The location of the print server is used.	-
		Enable Authen Trap	Select whether to allow or disallow the "EnableAuthenTrap" of the MIB-II object. If a violation of the community occurs "allow" is the setting, the SNMP trap is sent to the IP address specified in "TRAP Address".	DISABLE

POP Configuration



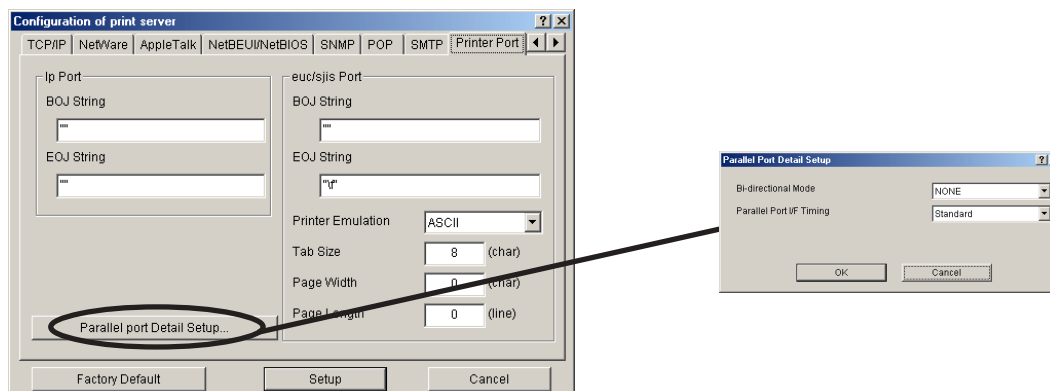
Tab	Item		Explanation	Factory Default
POP	Use POP Protocol		Enable/Disable POP protocol operations. If operation is disabled, the e-mail RECEIVE function will be not available.	DISABLE
	User profile (1-4)	Use User Setup		DISABLE
		POP Server Name	Setting the hostname or the IP address of the e-mail server. If you use a domain name, you need a DNS server setup.	-
		POP User Name	Setting of Login name (User name) for e-mail account.	-
		POP Password	Enter password for e-mail server connection.	-
		POP Port Number	Setting POP port number. It is recommended to use the default port number (110).	110
	Advanced Setup	Use APOP	Enable/ Disable APOP setting at server. In order to use APOP, it is necessary that the e-mail server supports APOP.	DISABLE
		Delete Mail after Retrieval	The excluded e-mail is not deleted even if the item of "Delete Mail after Retrieval" is checked.	DISABLE
		Return a read receipt	The transmitting propriety of a notice that a POP e-mail has been received and is printing is setup. This notice e-mail will transmit based on the SMTP setup.	DISABLE
		Mail Retrieval Limit	E-mails with a size larger than specified are excluded from being processed.If you set "0", the size is not limited.	0
		Filter Setting	With filter configuration, it is possible that only specific mails are printed. When null (empty string: default) is set, all e-mail is printed. You can configure filters by means of strings connected by "OR"(" ") or "AND"("&") and featuring four kinds of the items: "Subject"("S:string"), "To Address"("T:string"), "Carbon Copy"("C:string") and "From Address"("F:string").	-
	Send/receive Checking Interval		E-mail retrieval interval to the e-mail server is set in minutes.	15

SMTP Configuration



Tab	Item		Explanation	Factory Default
SMTP	Use SMTP Protocol		Enable/Disable SMTP protocol operations. If "Disable" is selected, e-mail "send" function is not available.	DISABLE
	SMTP Server Name		Setting SMTP server host name. Entering domain name or IP address as host name. If a domain name is used, it is necessary to configure the DNS server.	-
	From Address		Setting the sender address (From Address). Usually the e-mail address of the network administrator is	-
	To Address (1-2)		Setting e-mail destination address (To Address).	-
	Transmission Condition	Offline	E-mail is sent while the printer is off line.	OFF
		Paper out	E-mail is sent when the printer is out of paper.	OFF
		Printer error	E-mail is sent when abnormal conditions are encountered in the printer.	OFF
		Check Interval	In regular intervals the existence of events is checked. This interval is defined in minutes. If more than one event occurs within this interval, a bundled report is sent.	10
	Advanced Setup	SMTP Port Number	Setting the SMTP port number. It is recommend to use the default value (=25).	25
		Signature	Specify the signature string to be added at the end of an e-mail.	----- PRICOM XXXXX [00:80:92:XX:XX:XX] ----- (Name of PRICOM and lower 6 digits of Ethernet address)
	Authentication	Use SMTP Authentication	Enable or disable SMTP authentication.	DISABLE
		User Name	Specify a SMTP user name.	-
		Password	Specify a SMTP password.	-

PrinterPort Configuration



Tab	Item		Explanation	Factory Default
Printer Port	lp Port	BOJ String	Specify the string to be transmitted to the printer before output to the direct output port (lp port). Specify the string when a control code, etc. needs to be sent before printing.	-
		EOJ String	Specify the string to be transmitted to the printer after output to the direct output port (lp port). Specify the string when a control code, etc. needs to be sent after printing.	-
	euc/sjis Port	BOJ String	Specify the string to be transmitted to the printer before output to the port via a Kanji filter (sjis/euc). Specify the string when a control code, etc. needs to be sent before printing. (Kanji - double sized character for Japanese)	-
		EOJ String	Specify the string to be transmitted to the printer after output to the port via a Kanji filter (sjis/euc). Specify the string when a control code, etc. needs to be sent after printing. (Kanji - double sized character for Japanese)	\f
		Printer Emulation	Configure to correspond with the PDL(Printer Description Language). The printing data will be converted to a code that corresponds to the printer emulation in outputting to the output port via Kanji filter (sjis/euc). (Kanji - double sized character for Japanese)	ASCII
		Tab Size	Specify the number of characters to convert the tab code (0x09) to half size (single-byte) space (0x20) in outputting via a Kanji filter. When the value is 0, the tab is not converted. The value is from 0 to 16. (Kanji - double sized character for Japanese)	8

Tab	Item		Explanation	Factory Default
Printer Port	euc/sjis Port	Page Width	Specify the number of characters in a line when outputting via Kanji filter. The value is from 0 to 255. (Kanji - double sized character for Japanese)	0
		Page Length	Specify the number of lines on a page when outputting via Kanji filter. The value is from 0 to 255. (Kanji - double sized character for Japanese)	0
	parallel port Detail Setup	Bi-directional Mode	Specify the operation mode of the parallel port. You can obtain printer status from a printer that supports bi-directional transmission by setting the bi-directional mode.	NONE
		Parallel Port I/F Timing	Specify the transfer speed of data for the parallel port. Specify the appropriate mode because processing depends on the capacity of the printer connected.	Standard

Configuration NetWare

Creating NetWare queue

A NetWare object necessary to use PRICOM in the bindery emulation mode or NDS context mode can be created.



-To control NetWare object, the Novell client software is required.

-AdminManager does not show "Create NetWare queue" icon and option if the Novell client software is not installed.

-Before creating NetWare queue, select AdminManager Settings, then Print Server Configuration, then NetWare to configure NetWare protocol.

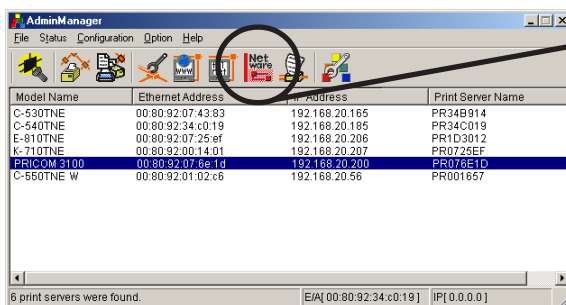
-Before creating NetWare queue, contact your network administrator for NetWare environment and print mode.



-Also refer to chapter 6.

Using PRICOM with bindery connection

1. Create NetWare queue.

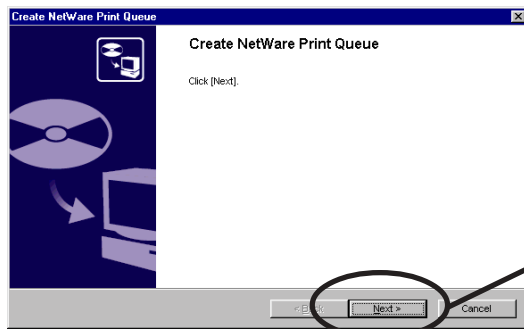


Click **Create NetWare queue**.



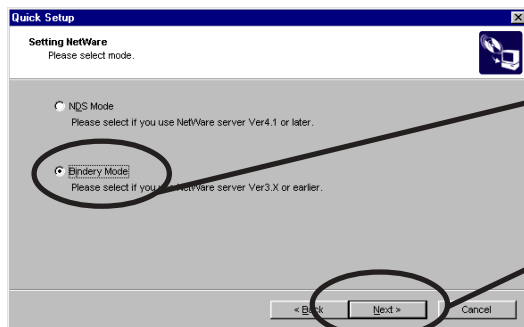
-To run the NetWare queue creation wizard, alternatively click **Configuration**, then **Create NetWare queue** in the AdminManager main menu.

2. Configure NetWare.



Click **Next**.

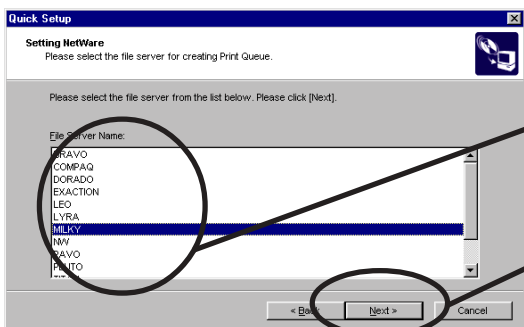
3. Select the NetWare server operation mode.



Select **Bindary Mode**.

Click **Next**.

4. Select the file server name to create a print queue.



Select the file server name.

Click **Next**.



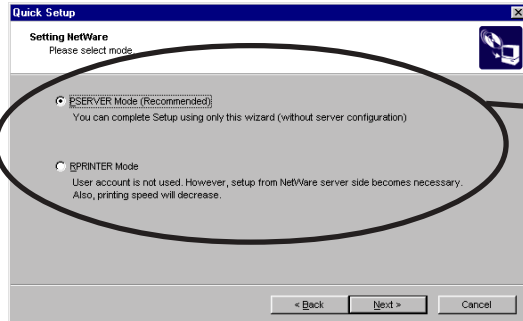
-The next screens to be displayed may vary depending on the NetWare server selected.

NetWare3 or below will go to -> 5 (A)

NetWare4 or above will go to -> 5 (B)

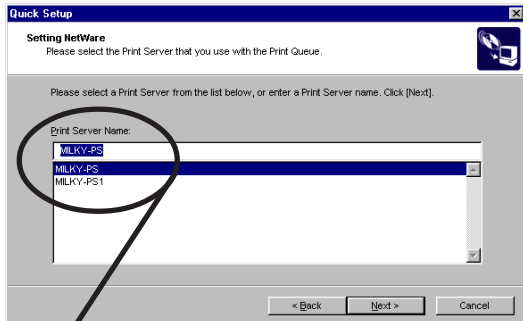
When NetWare 4 or above file server is selected, print server mode will be automatically selected.

5(A). Select printing mode <NetWare 3 or below>



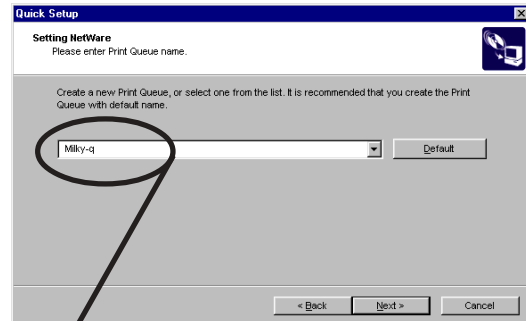
Select the **PSERVER Mode**.

< Remote printer mode>

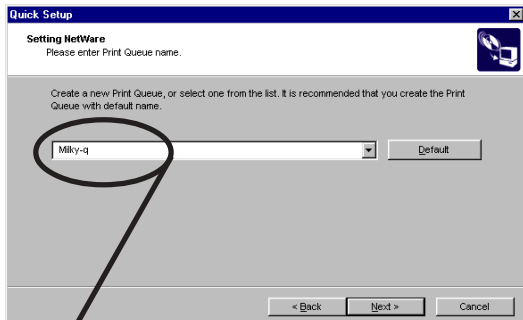


Select print server.

<Print server mode >

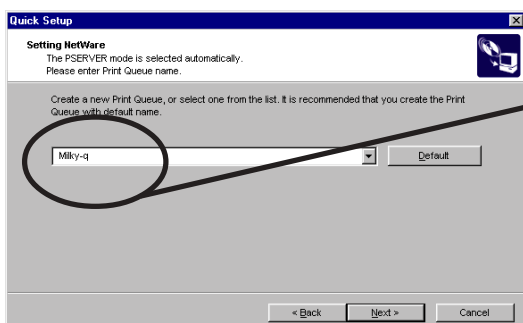


Type print queue name.



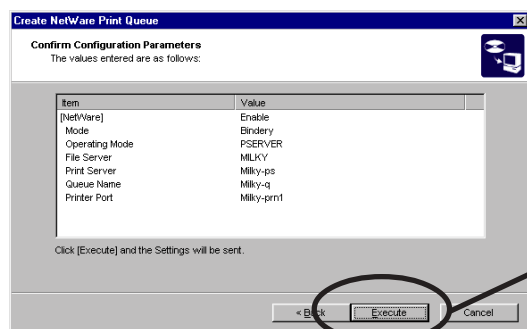
Type print queue name.

5(B). Type print queue name. <NetWare4 or above>



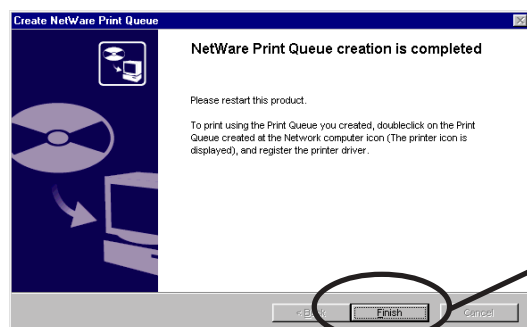
Type the print queue name.

6. Verify the configuration parameters.



Click **Execute**.

7. Configuration is complete.

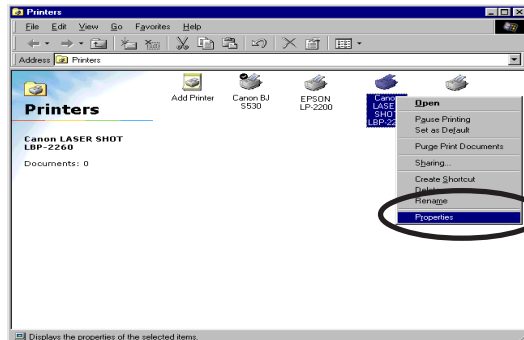


Click **Finish**.

Using PRICOM via bindery mode: Configuring print port

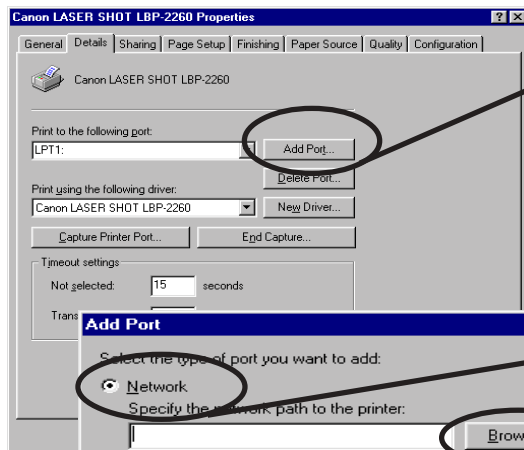
This section explains how to configure printer port to printer in Windows 95/98/Me.

1. Click **Start**, then **Settings**, then **Printers**. Open the **Properties** of printer you use.

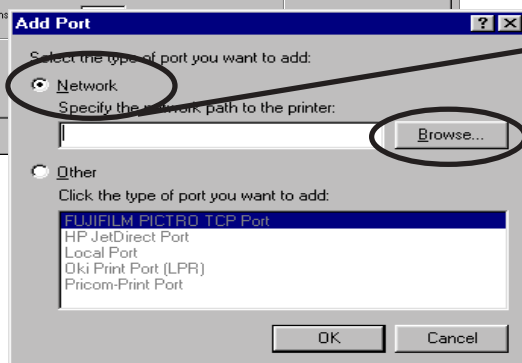


Select **Properties** of the printer to be used.

2. Move to **Details**.

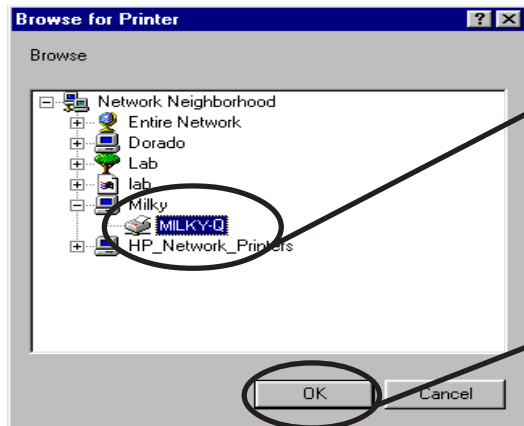


Select **Add Port**.



Select **Network** and Click **Browse**.

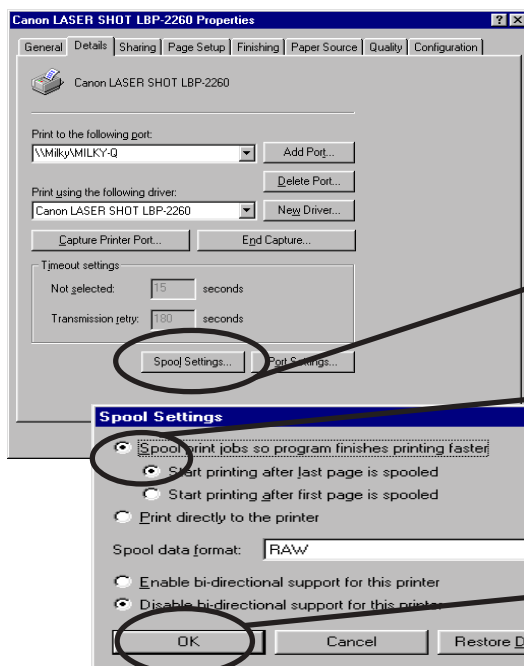
3. Assign a printer queue to printer print port.



Select the print queue to use.

Click **OK**.

4. Configure spool settings.



Select **Spool Settings**.

Select **Start printing after the last page is spooled**.

Click **OK**.

5. Configuration is complete. Click **OK** and close **Properties**. Now, PRICOM can be used in NetWare environment.

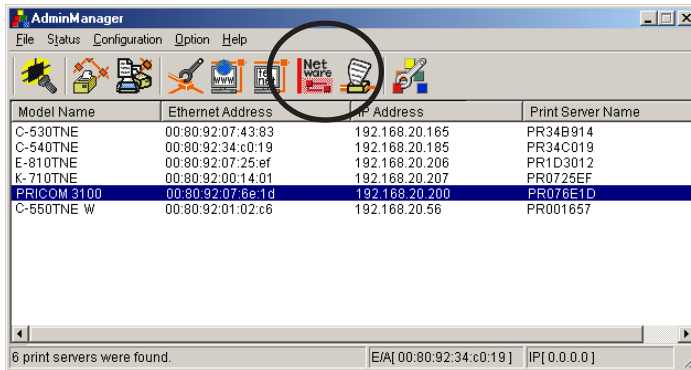
Using PRICOM via NDS mode.



-Only PRICOM 3100 supports NDS connection.

TIP

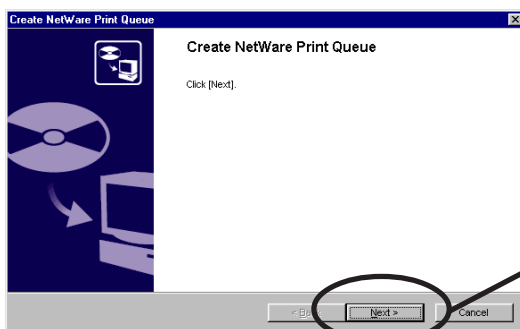
1. Click **Create NetWare queue**.



NOTE

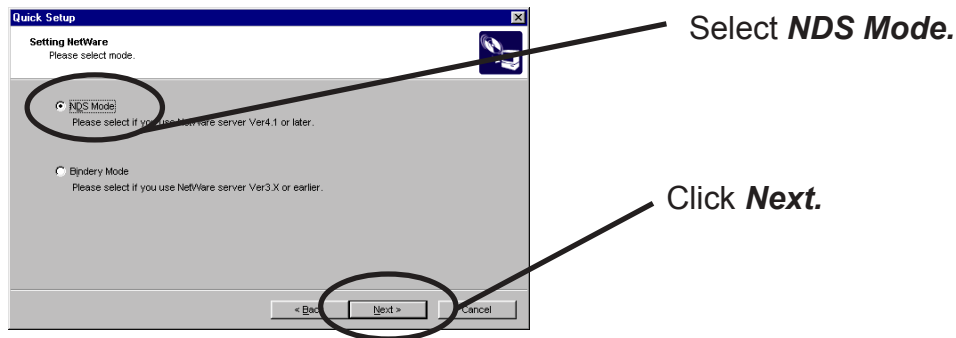
-To run the NetWare queue creation wizard, alternatively click **Configuration**, then **Create NetWare queue** in the AdminManager menu.

2. Configure NetWare.



Click **Next**.

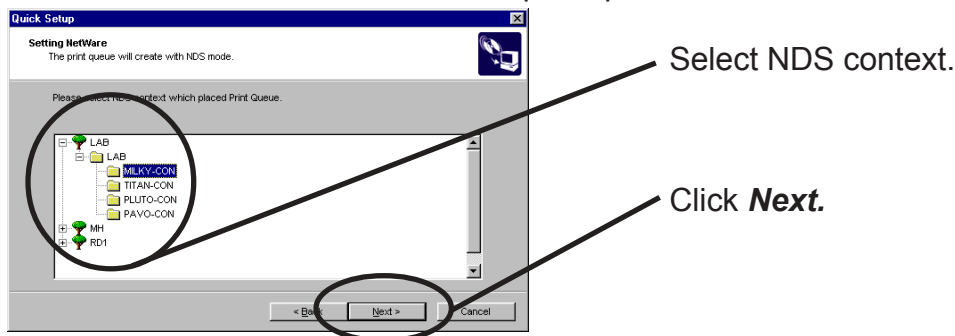
3. Select NetWare server operation mode.



NOTE

-Contact your network administrator for the operation mode.
For the information on Bindery mode, refer to chapter 6.

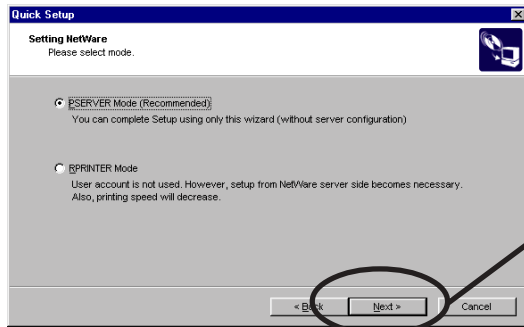
4. Select the NDS context to create the print queue.



TIP

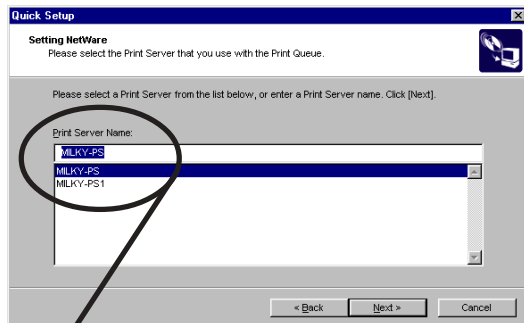
-The next screen to be displayed may vary depending on NDS support availability.
NDS support will go to -> 5 (A)
NDS non-support will go to -> 5 (B)
-When NDS non-support, remote printer mode will be automatically selected.

5(A). Select the printing mode. <NDS support>



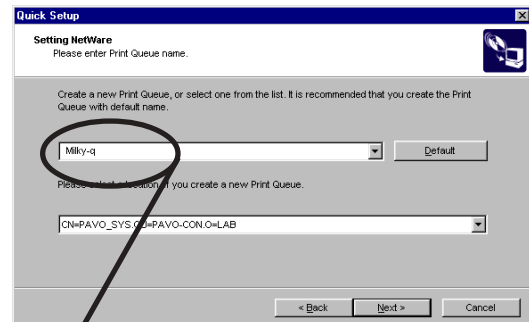
Click **Next**.

<Remote printer mode>

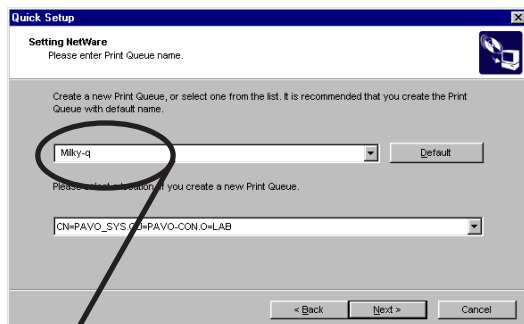


Select print server.

<Print server mode>

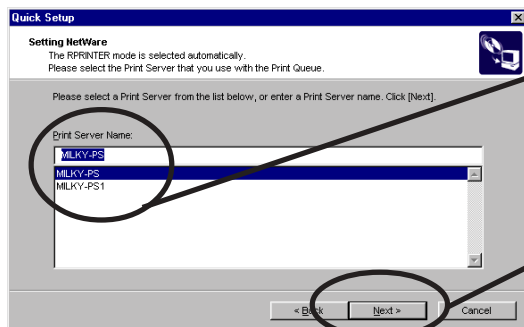


Type print queue name.



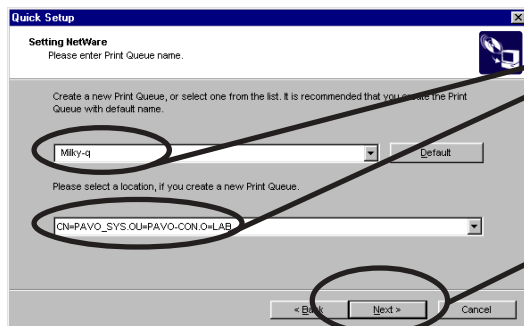
Type print queue name.

5(B). Select the printer server.<NDS non-support>



Select print server.

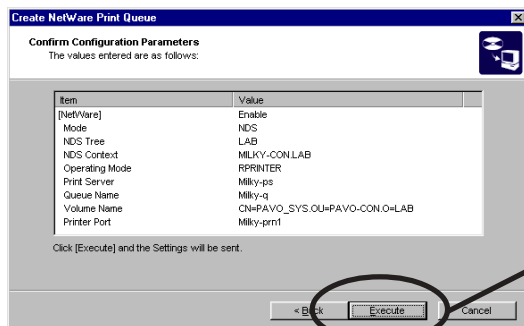
Click **Next**.



Type print queue name.

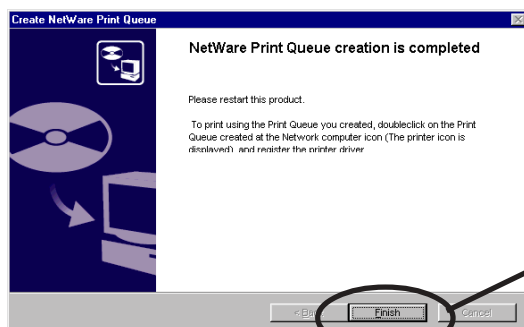
Click **Next**.

6. Verify the configuration parameters.



Click **Execute**.

7. Configuration is complete.

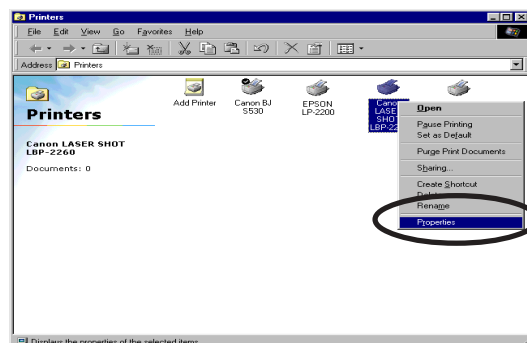


Click **Finish**.

Using PRICOM via NDS connection: Configuring print port

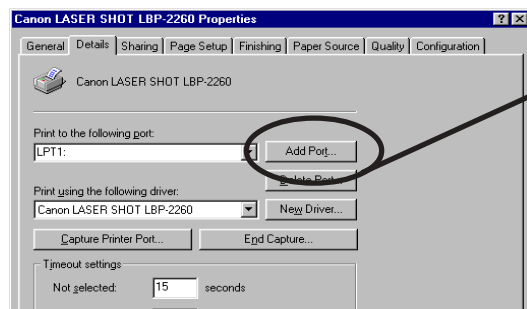
This section explains how to configure printer port to printer in Windows 95/98/Me.

1. Click **Start**, then **Settings**, then **Printers**. Open the **Properties** of printer you use.

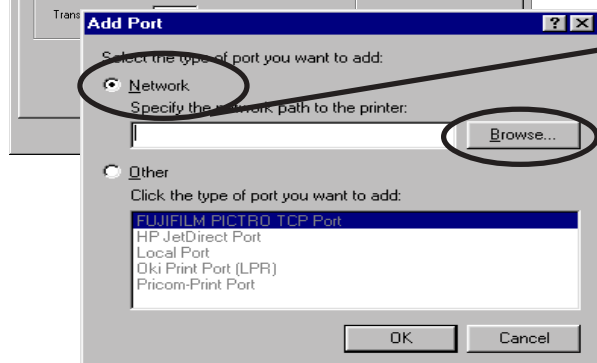


Select **Properties** of the printer to be used.

2. Move to **Details**.

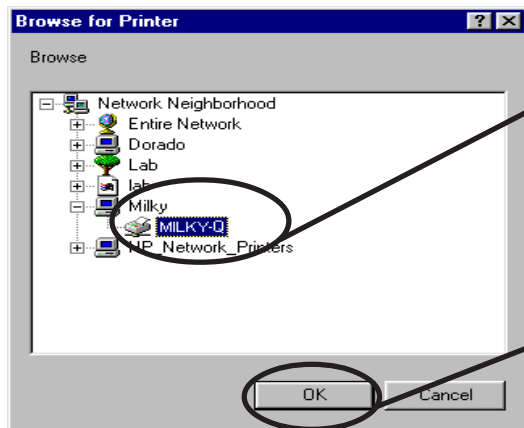


Select **Add Port**.



Select **Network** and Click **Browse**.

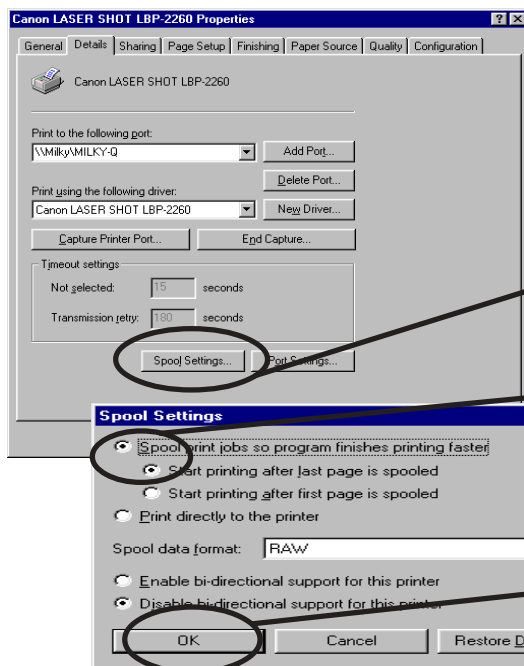
3. Assign a print queue to printer port.



Select the print queue to use.

Click **OK**.

4. Configure spool settings.



Select **Spool Settings**.

Select **Start printing after the last page is spooled**.

Click **OK**.

5. Configuration is complete. Click OK and close Properties. Now, PRICOM can be used in NetWare environment.

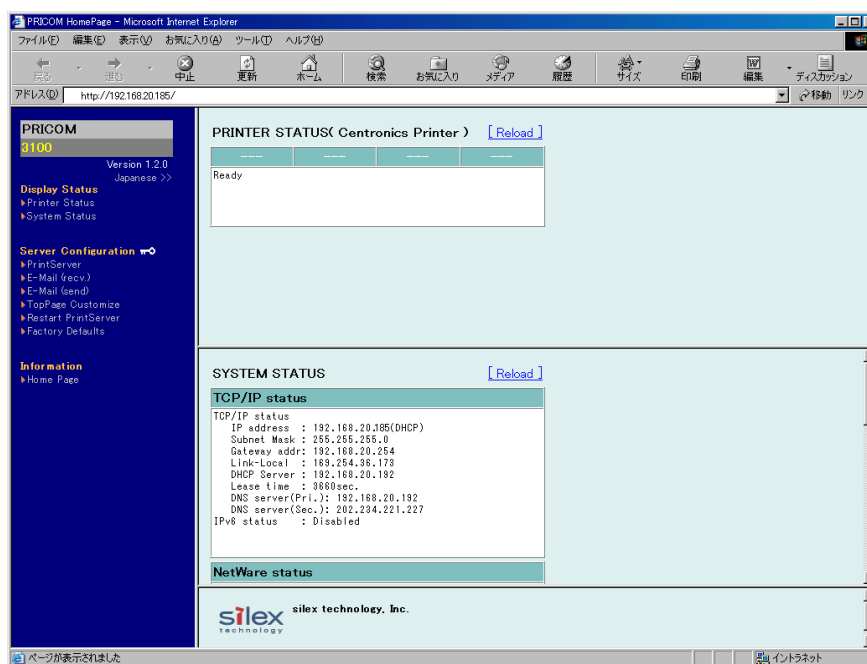
Configuring PRICOM via Web browser

This chapter explains how to access PRICOM Webpage by using Web browser. PRICOM has HTTP which enables you to check or change PRICOM configuration and check the printer status.



TIP

- IP address must be assigned to PRICOM when using Web browser.
- Internet Explorer3.0 (or above) or Netscape Navigator3.0 (or above) are recommended for Web browser.
- The display contents may vary depending on PRICOM you use.

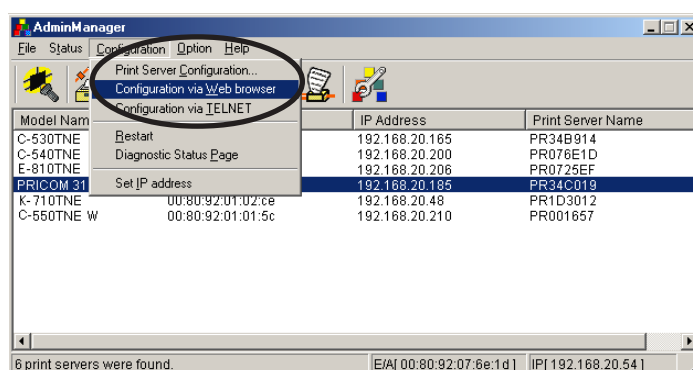


Display PRICOM Webpage

To display the Webpage of PRICOM to be configured, follow one of the following steps.

Displaying the webpage from AdminManager

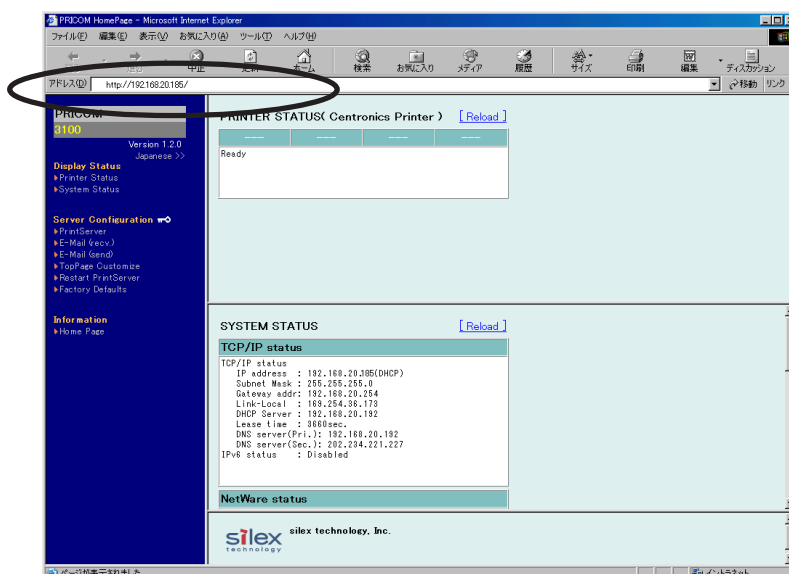
Select PRICOM to be configured from the AdminManager list, then click **Configuration**, then **Configuration via Web browser**.



Displaying the webpage from Web browser

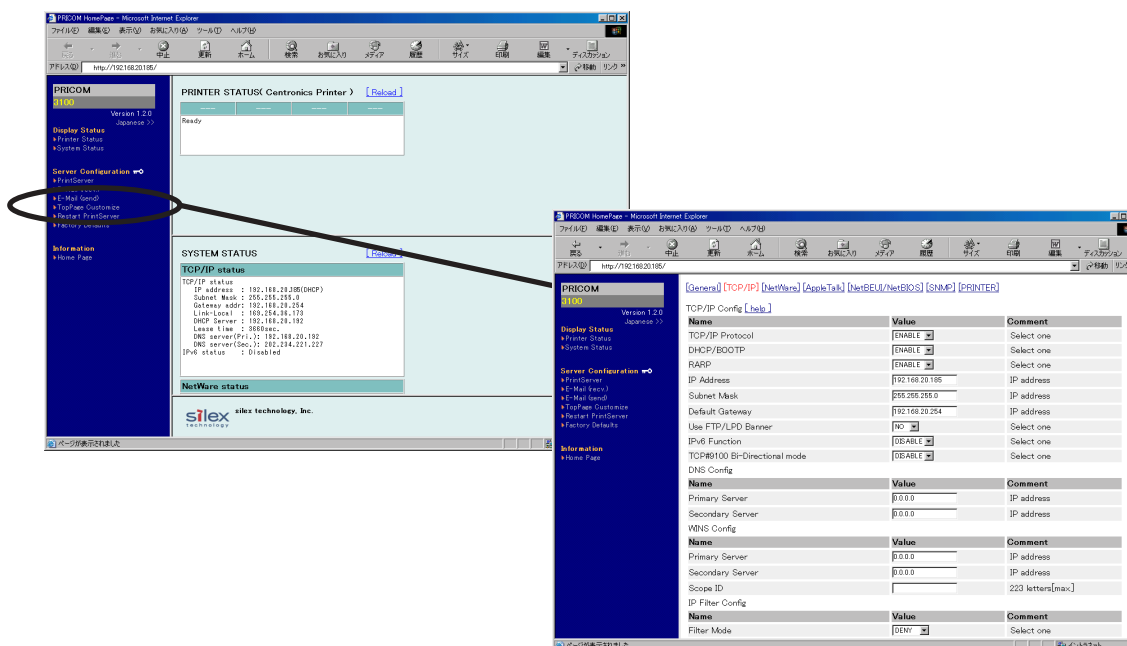
Enter the IP to assign for the PRICOM to the Web browser.

Example: <http://192.168.20.185> (PRICOM 3100)



Configuration via the Webpage

Configuration screen will be displayed if you click the desired items among those listed on the Web browser. Enter the set value into the selected item.



Structure of PRICOM webpage menu.

Item		Explanation
Display Status	Printer Status	Display the status of the printer
	System Status	Display the status of the system
Server Configuration	PrintServer	Set up various parameters of the PRICOM
	E-Mail (recv.)	Set up E-Mail receiving function
	E-Mail (send)	Set up E-Mail transmitting function
	TopPage Customize	Set up the PRICOM Web page display
	Restart PrintServer	Reboot the PRICOM
	Factory Default	Recover the factory settings of PRICOM
Information	Home page	Display silex technology, Inc. homepage



-Top page of PRICOM webpage can be uniquely displayed by using the top page customizing function.

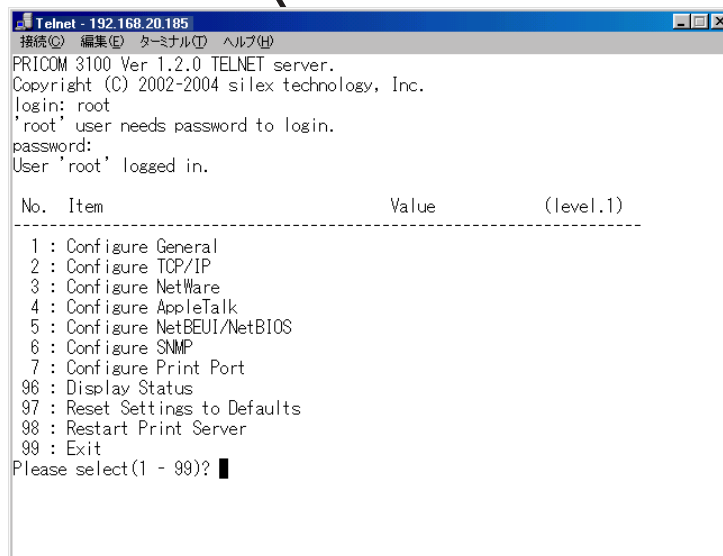
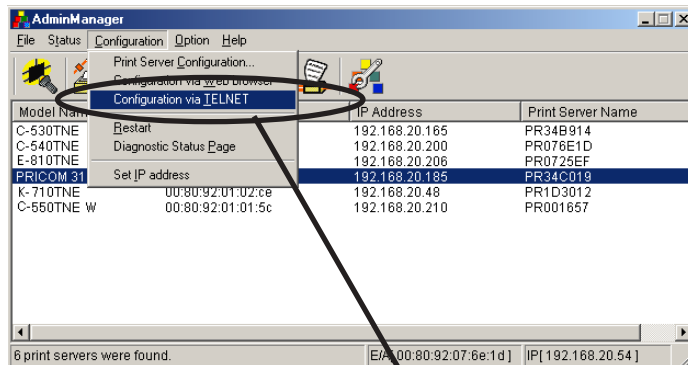
Configuring PRICOM using TELNET

Since TELNET protocol is embedded in PRICOM, TELNET supplied with UNIX machine or PC TCP/IP software can be used to configure PRICOM in detail and also to change configuration.



TIP

- IP address need to be configured if using TELNET.
- You need to log in by root user to configure by TELNET.
- Available function may vary depending on PRICOM you use.



Web browser/TELNET configuration items

Print server function

General

	Item		Explanation	Factory Default
	Web browser	TELNET		
General	Change root Password	Change root Password	Please enter the password.(in ASCII TEXT) This password will be used for configuration changes via Telnet, Web page and Setup Tools.	-
	Use HP JetAdmin	Use HP JetAdmin	Please select whether you want to use HEWLETT PACKARD's JetAdmin/WebJetAdmin.	YES
	LAN Interface	LAN Interface	Please select the network speed. It is recommended to select "AUTO". If you select "AUTO", the network speed will be detected automatically. If the HUB did not link when you switched on your print server (you can check the HUB's LINK LED), please try a different network speed manually.	AUTO

TCP/IP

	Item		Explanation	Factory Default
	Web browser	TELNET		
TCP/IP	TCP/IP Protocol	TCP/IP Protocol	Enable/Disable TCP/IP protocol operations. This has influence on the configuration of Setup Tools, LPR, FTP, TELNET, SNMP, HTTP and other protocols over TCP/IP.	ENABLE
	DHCP/BOOTP	DHCP/BOOTP	Enable/Disable DHCP/BOOTP protocol operations. DHCP/BOOTP is a protocol, via which IP address gets assigned by the BOOTP server or DHCP server. If you use DHCP/BOOTP server, the DHCP/BOOTP server must be in the same segment as the print server. This print server detects DHCP and BOOTP automatically. If more than 1 address get returned, the IP address which is returned first will be used.	ENABLE
	RARP	RARP	Enable/Disable RARP protocol operations. RARP is a protocol, via which IP address gets assigned by the RARP server. If you use RARP server, the RARP server must be in the same segment as the print server.	ENABLE

	Item		Explanation	Factory Default
	Web browser	TELNET		
TCP/IP	IP Address	IP Address	Setting the Print Server IP address. The IP address must be 4 numbers, each between 0-255 (eg. 192.168.100.10).	0.0.0.0
	Subnet Mask	Subnet Mask	Setting the print server subnet mask. The subnet mask must be 4 numbers, each between 0-255 (eg. 255.255.255.0). However, entering 0.0.0.0 would not be valid, and the subnet mask corresponding to the IP address would be used automatically.	0.0.0.0
	Default Gateway	Default Gateway	Setting the default gateway address. The default gateway address must be 4 numbers, each between 0-255 (eg. 192.168.100.240). If you use a gateway, the gateway must be in the same segment as the print server. However, entering 0.0.0.0 would not be valid.	0.0.0.0
	Use FTP/LPD Banner	Use FTP/LPD Banner	You can select to use a banner page when printing with LPR and FTP. (A banner page is print cover page with print job explanations.)	DISABLE
	IPv6 Function	IPv6 Function	Enable IPv6 if you use IPv6.	DISABLE
	TCP #9100 Bi-Directional mode	TCP #9100 Bi-Directional mode	Enable/Disable TCP #9100 Bi-Directional mode.	DISABLE
	DNS Config			
	Primary Server	Primary Server	Setting the DNS server (primary) address. When POP/SMTP server name is configured directly at IP address, the DNS server's setting is not necessary. The values must be 4 numbers, each between 0-255 (eg. 192.168.100.10).	0.0.0.0
	Secondary Server	Secondary Server	Setting the DNS server (secondary) address. When POP/SMTP server name is configured directly at IP address, the DNS server's setting is not necessary. The values must be 4 numbers, each between 0-255 (eg. 192.168.100.10).	0.0.0.0
	WINS Config			
	Primary Server	Primary Server	Setting the WINS server (primary) address. WINS server will resolve the IP address from the host name. Therefore you can use a hostname instead of the IP address when printing. The values must be 4 numbers, each between 0-255 (eg. 192.168.100.10).	0.0.0.0
	Secondary Server	Secondary Server	Setting the WINS server (secondary) address. WINS server will resolve the IP address from the host name. Therefore you can use a hostname instead of the IP address when printing. The values must be 4 numbers, each between 0-255 (eg. 192.168.100.10).	0.0.0.0
	Scope ID	Scope ID	The scope ID defines the computer group that recognized the registered host name.	-
	IP Filter Config			
	Filter Mode	Filter Mode	Setting of IP filter operations. Available options are "allow" and "deny". If you select "allow", only the data from the set IP address range are accepted. If you select "deny", the data from the set IP address range can not be received.	DENY
	Filter #0-3 start/end address	Filter #0-3 start/end address	Setting IP filter range. IP addresses to be filtered can be set to maximum 4 address ranges. If address range setting is not required, please enter the address range from "0.0.0.0" to "0.0.0.0".	0.0.0.0

Item			Explanation	Factory Default
Web browser	TELNET			
TCP/IP	Rendezvous Config			
	Rendezvous Enable	Rendezvous Enable	Enable Rendezvous if you use Rendezvous.	ENABLE
	Rendezvous Name	Rendezvous Name	Specify a Rendezvous name	"RDVxxxxxx" (xxxxxx is the last 6 figures of the Ethernet address)
	Network PnP Config			
	Network PnP Enable	Network PnP Enable	Enable NetworkPnP if you use NetworkPnP.	ENABLE
	ThinPrint Config			
	ThinPrint	ThinPrint	Enable/Disable ThinPrint operations. (Only TCP/IP model)	ENABLE
	ThinPrint Port Number	ThinPrint Port Number	Configure the port number to use ThinPrint. (Only TCP/IP model)	4000

NetWare

	Item		Explanation	Factory Default
	Web browser	TELNET		
Net Ware	NetWare Protocol	NetWare Protocol	Enable/Disable NetWare protocol.	ENABLE
	Frame Type	Frame Type	Select the default frame type of the print server. If the set frame type does not work, it will be changed to a different frame type automatically.	802.2
	Operation Mode	Operation Mode	Select the primary operation mode (PSERVER mode / RPRINTER mode) of the print server. If the set mode does not work, the print server starts in a different mode.	PSERVER
	Printer Name	Printer Name	Set the printer name under print server information within the NetWare server. It must be the same as the "Printer Name" registered in the NetWare server.	PRxxxxxx-Prn1 (Lower 6 digits of Ethernet address)
	PSERVER Config		Send the job via NetWare	
	Print Server Name	Print Server Name	Specify the print server name for the print server when starting in PSERVER mode. Because this configuration is used as the identifier on the network in the NetWare protocol, the print server name set must be different from other names in the NetWare environment. It is used as a login name in connecting to the NetWare server.	PRxxxxxx (Lower 6 digits of Ethernet address)

Net Ware	Item		Explanation	Factory Default
	Web browser	TELNET		
	Login Password	Login Password	Set the password that is authenticated when the print server logs into the file server as a PSERVER mode. When the password is set for the print server, the same password must be set to the corresponding file server. If the print server is connected to two or more file servers, the same password must be set to all the file servers.	-
	Job Polling (sec.)	Job Polling (sec.)	Set the interval for the print server to query the file server for jobs in units of seconds. Usually the value should be the default.	4
	Bindery Mode	Bindery Mode	Enable/ Disable Bindery Mode operation. If disabled, only NDS mode is available. Except cases where you want to use NDS mode only, it is recommended not to disable it.	ENABLE
	FSERVER Name (1-8)	FSERVER Name (1-8)	Set the name of the file server primarily connected to. The print server logs into the file server set here when operating in PSERVER mode. The print server searches the file server automatically and logs in if the value is blank.	-
	NDS Tree	NDS Tree	Specify the name of the NDS tree connected to. Because the tree name is obtained automatically, it is usually unnecessary to specify it here. When there are two or more trees on the same network it is necessary to specify the name here.	-
	NDS Context	NDS Context	Specify the NDS context connected to in PSERVER mode. The context which created the print server on the file server should be specified here.	-
	RPRINTER Config		Job management can be performed via NetWare server.	
	PSERVER Name (1-8)	PSERVER Name (1-8)	Set the name of the print server primarily connected to. This product connects to the print server set here when operating in RPRINTER mode. This product searches print server automatically and connects if the value is blank.	-
	Job Timeout(sec.)	Job Timeout (sec.)	Set the timeout value (in units of seconds) for the print server to determine the end of the job when operating in RPRINTER mode. Usually the value should be the default.	10

AppleTalk

	Item		Explanation	Factory Default
	Web browser	TELNET		
AppleTalk	AppleTalk Protocol	AppleTalk Protocol	Enable/ Disable AppleTalk Protocol operations.	ENABLE
	Zone Name	Zone Name	The print server sets the zone name where it belongs. If the value is blank, this product will belong to the default zone, set in the AppleTalk Router within the network.	*
	Printer Name	Printer Name	Set the AppleTalk printer name. The name set here can be seen in the Chooser. The special symbols in AppleTalk protocol ("=", ":", "@", and "*") must be excluded from the string.	PRxxxxxx (Lower 6 digits of Ethernet address)
	PostScript Mode	PostScript Mode	When the PostScript printer supports binary mode, PostScript data can be sent in binary. Select BCP or TBCP in accordance with the mode of your printer. Use TBCP when PS binary data is printed by a particular printer. Select ASCII (default) when a printer other than a PostScript one is connected.	ASCII

NetBEUI/NetBIOS

	Item		Explanation	Factory Default
	Web browser	TELNET		
NetBEUI/ NetBIOS	NetBEUI Protocol	NetBEUI Protocol	Enable/ Disable NetBEUI protocol operations.	ENABLE
	NetBIOS over TCP	NetBIOS over TCP	Enable/ Disable NetBIOS over TCP operations.	ENABLE
	Computer Name	Computer Name	Specify a computer name. The name set here is shown as a computer in Windows Explorer. The name must be different from those of other computers.	PRxxxxxx (Lower 6 digits of Ethernet address)
	Workgroup	Workgroup	Specify the workgroup that this print server belongs to. Enter the default workgroup name or an existing workgroup name. A new workgroup name that does not exist in the network is not shown as Workgroup.	PrintServers
	Comment	Comment	Set the description of the print server. The information set here is shown as the description (comments) of the print server in Windows Explorer.	PRICOM XXXXX
	Browse Master	Browse Master	In NetBEUI or NetBIOS over TCP, you can specify whether to activate the master browser function.	ENABLE

SNMP

	Item		Explanation	Factory Default
	Web browser	TELNET		
SNMP	Authentic Community	Authentic Community	Specify the authentication community name of SNMP. This community name is authenticated when an SNMP set request is received.	public
	Trap Community	Trap Community	Specify the trap community of SNMP. This community name is used when the print server send a trap.	public
	Trap Address(IP)	Trap Address(IP)	Specify the destination IP address of the SNMP trap. The value is a four-part series of numbers separated by decimal points, such as "xxx.xxx.xxx.xxx". When the value is "0.0.0.0"(default), this item is disabled and a trap will not be generated in any case.	0.0.0.0
	SysContact	SysContact	Specify the SysContact of the MIB-II object. The e-mail address of the network administrator is used.	-
	SysName	SysName	Specify the SysName of the MIB-II object. The host name or domain name of the print server is used.	-
	SysLocation	SysLocation	Specify the SysLocation of the MIB-II object. The location of the print server is used.	-
	EnableAuthenTrap	EnableAuthenTrap	Select whether to allow or disallow the "EnableAuthenTrap" of the MIB-II object. If a violation of the community occurs "allow" is the setting, the SNMP trap is sent to the IP address specified in "TRAP Address".	2

PRINTER

	Item		Explanation	Factory Default
	Web browser	TELNET		
PRINTER	BOJ String (lp)	BOJ String (lp)	Specify the string to be transmitted to the printer before output to the direct output port (lp port). Specify the string when a control code, etc. needs to be sent before printing.	-
	EOJ String (lp)	EOJ String (lp)	Specify the string to be transmitted to the printer after output to the direct output port (lp port). Specify the string when a control code, etc. needs to be sent after printing.	-
	BOJ String (sjis/euc)	BOJ String (sjis/euc)	Specify the string to be transmitted to the printer before output to the port via a Kanji filter (sjis/euc). Specify the string when a control code, etc. needs to be sent before printing. (Kanji - double sized character for Japanese)	-
	EOJ String (sjis/euc)	EOJ String (sjis/euc)	Specify the string to be transmitted to the printer after output to the port via a Kanji filter (sjis/euc). Specify the string when a control code, etc. needs to be sent after printing. (Kanji - double sized character for Japanese)	\f
	Printer Emulation	Printer Emulation	Configure to correspond with the PDL(Printer Description Language). The printing data will be converted to a code that corresponds to the printer emulation in outputting to the output port via Kanji filter (sjis/euc). (Kanji - double sized character for Japanese)	ASCII
	TAB Size (char.)	TAB Size (char.)	Specify the number of characters to convert the tab code (0x09) to half size (single-byte) space (0x20) in outputting via a Kanji filter. When the value is 0, the tab is not converted. The value is from 0 to 16. (Kanji - double sized character for Japanese)	8
	Page Width (char.)	Page Width (char.)	Specify the number of characters in a line when outputting via Kanji filter. The value is from 0 to 255. (Kanji - double sized character for Japanese)	0
	Page Length (line)	Page Length (line)	Specify the number of lines on a page when outputting via Kanji filter. The value is from 0 to 255. (Kanji - double sized character for Japanese)	0
	Printer Port Mode	Printer Port Mode	Specify the operation mode of the parallel port. You can obtain printer status from a printer that supports bi-directional transmission by setting the bi-directional mode.	NONE
	Centronics I/F Timing	Centronics I/F Timing	Specify the transfer speed of data for the parallel port. Specify the appropriate mode because processing depends on the capacity of the printer connected.	Standard

E-Mail (POP)

	Item		Explanation	Factory Default
	Web browser	TELNET		
E-Mail (recv.)	Check Interval (min.)	Check Interval (min.)	E-mail retrieval interval to the mail server is set in minutes.	15
	Local Time Zone	Local Time Zone	Setting the time zone. For use in Japan, please enter "+09:00".	+9:00
	User profile (1-4)	User Profile (1-4)	Enable/Disable POP protocol operations. If operation is disabled, the e-mail RECEIVE function will be not available.	DISABLE
	POP Server Name	POP Server Name	Setting the hostname or the IP address of the e-mail server. If you use a domain name, you need a DNS server setup.	-
	POP Port Number	POP Port Number	Setting POP port number. It is recommended to use the default port number (110).	110
	POP User Name	POP User Name	Setting of Login name (User name) for e-mail account.	-
	POP Password	POP Password	Enter password for e-mail server connection.	-
	Use APOP	Use APOP	Enable/ Disable APOP setting at server. In order to use APOP, it is necessary that the e-mail server supports APOP.	NO
	Delete Mail after Retrieve	Delete Mail after Retrieve	The excluded E-mail is not deleted even if the item of "Delete Mail after Retrieval" is checked.	NO
	Maximum Retrieve (KByte)	Maximum Retrieve (KByte)	E-mails with a size larger than specified are excluded from being processed.If you set "0", the size is not limited.	0
	Filter Setting	Filter Setting	With filter configuration, it is possible that only specific mails are printed. When null (empty string: default) is set, all e-mail is printed. You can configure filters by means of strings connected by "OR"(" ") or "AND"("&") and featuring four kinds of the items: "Subject"("S:string"), "To Address"("T:string"), "Carbon Copy"("C:string") and "From Address"("F:string").	-
	Return a read receipt	Return a read receipt	The transmitting propriety of a notice that a POP e-mail has been received and is printing is setup. This notice e-mail will transmit based on the SMTP setup.	NO

E-Mail (SMTP)

	Item		Explanation	Factory Default
	Web browser	TELNET		
E-Mail (send)	SMTP Protocol	SMTP Protocol	Enable/Disable SMTP protocol operations. If "Disable" is selected, e-mail "send" function is not available.	DISABLE
	SMTP Server Name	SMTP Server Name	Setting SMTP server host name. Entering domain name or IP address as host name. If a domain name is used, it is necessary to configure the DNS server.	-
	SMTP Port Number	SMTP Port Number	Setting the SMTP port number. It is recommend to use the default value (=25).	25
	From Address	From Address	Setting the sender address (From Address). Usually the e-mail address of the network administrator is set.	-
	Signature Line (1-8)	Signature Line (1-4)	Specify the signature string to be added at the end of an e-mail.	----- PRICOM XXXXX [00:80:92:XX:XX:XX] ----- (Name of PRICOM and lower 6 digits of Ethernet address)
	Send Address / Event to Address (1-2)			-
	To address	To Address	Setting e-mail destination address (To Address).	-
	Check Interval (min.)	Check Interval (min.)	In regular intervals the existence of events is checked. This interval is defined in minutes. If more than one event occurs within this interval, a bundled report is sent.	10
	Offline	Offline	E-mail is sent while the printer is off line.	OFF
	Paper Empty	Paper Empty	E-mail is sent when the printer is out of paper.	OFF
	Fault	Fault	E-mail is sent when abnormal conditions are encountered in the printer.	OFF
	SMTP Authentication	SMTP AUTH Enable	Enable or disable SMTP authentication.	DISABLE
		SMTP AUTH Name	Specify a SMTP user name.	-
		SMTP AUTH Password	Specify a SMTP password.	-