

6. Using PRICOM in NetWare

This chapter explains how to configure PRICOM and NetWare server to print from NetWare environment.



TIP

- Make sure the Novell client software has already been installed on the client and NetWare server is on the network.
- Make sure to install printer driver before you start using PRICOM.

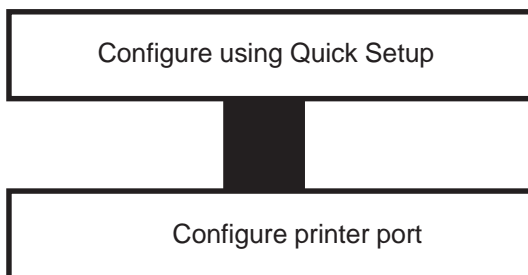


NOTE

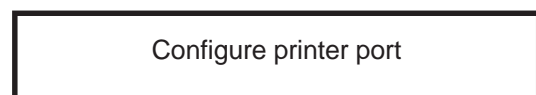
- NetWare server can be configured by either silex configuration utility (Quick Setup or AdminManager) or Novell utility, PCONSOLE.
- When configuring by AdminManager, refer to Chapter 8.

<Preparation for printing in NetWare environment>

In case of initial installation and printing
(Administrator)



In case of printing
(Client)



Printing in NetWare Environment

Verifying NetWare Environment

When printing from NetWare client, configuration may vary depending on NetWare environment. For further information, contact your network administrator.

When the client is connected to the NetWare server using bindery mode:

→ go to 6.3

When the client machine is connected to the NetWare server using NDS mode:

→ go to 6.11



-Only PRICOM 3100 supports NDS connection.

TIP

Using Bindery Mode

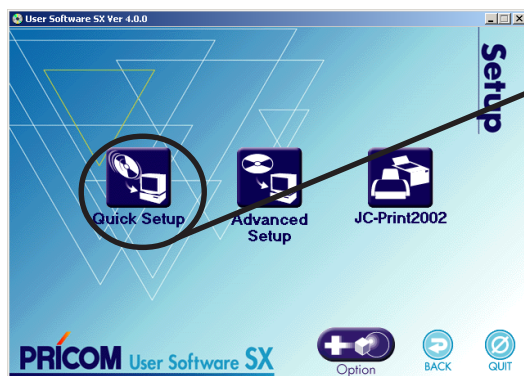
Configuration Using Quick Setup

1. Insert the User Software SX in the CD-ROM drive of your Windows PC. The main menu screen will be displayed.



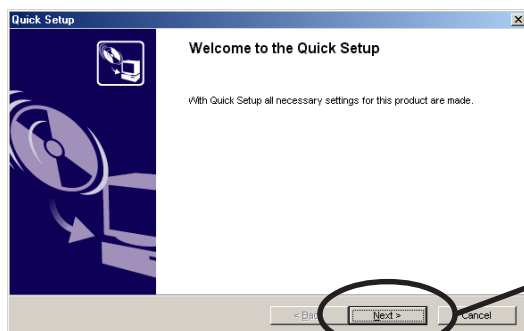
Select **Setup**.

2. The below screen will be displayed.



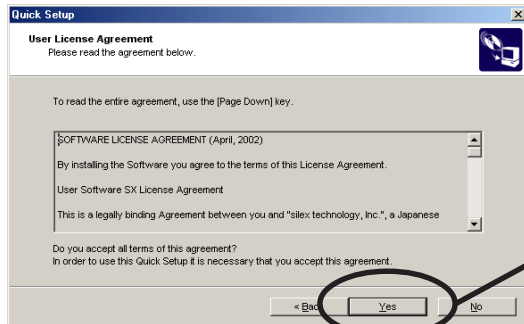
Select **Quick Setup**.

3. Quick Setup loads.



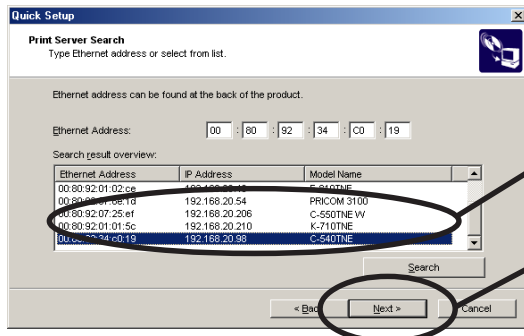
Click **Next**.

4. Confirm the Software License Agreement.



Read the agreement and click **Yes** if you accept it.

5. Select PRICOM to be configured.



Select PRICOM to be configured.

Click **Next**.



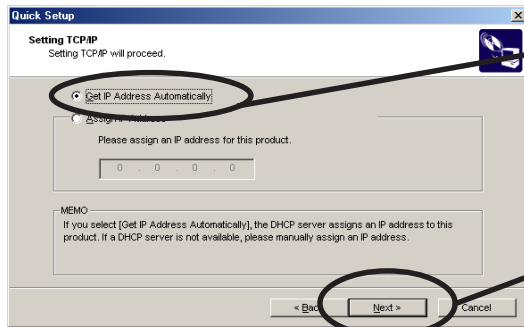
NOTE

-If PRICOM does not appear in the list, click **Search**. You can search PRICOM by typing in Ethernet address directly.

6. Assign an IP address.

When you have DHCP server in your environment.

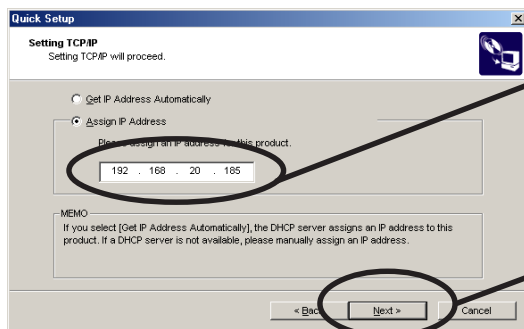
(A) Obtain an IP address from DHCP server automatically.



Select **Get IP address automatically**.

Click **Next**.

(B) Assign an IP address manually.



Assign the optional IP address.

Click **Next**.

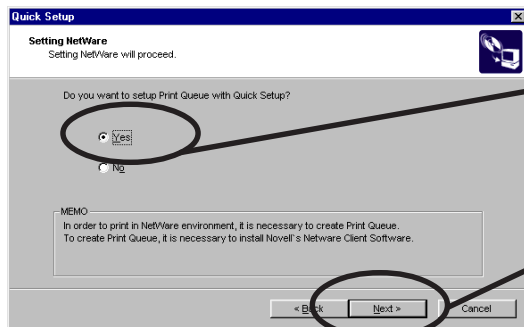
When you do not DHCP server in your environment.



Assign the optional IP address.

Click **Next**.

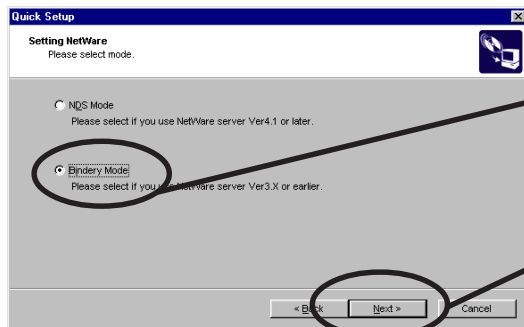
7. Configure NetWare.



Click **Yes**.

Click **Next**.

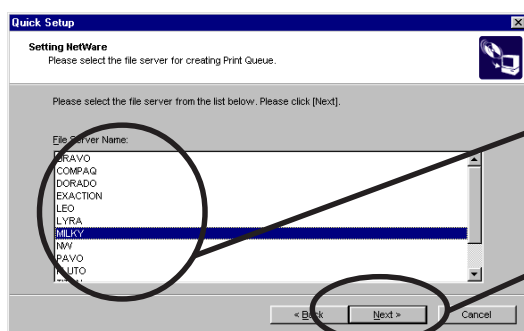
8. Select the operation mode of the NetWare server.



Select **Bindery mode**.

Click **Next**.

9. Select the file server to create a print queue.



Select the file server.

Click **Next**.



TIP

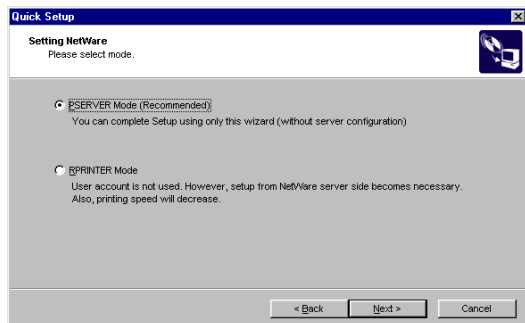
-The next screen to be displayed vary depending on NetWare server selected.

NetWare 3 or below will go to ->10 (A)

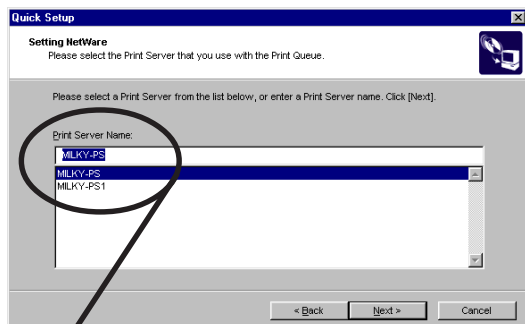
NetWare 4 or above will go to ->10 (B)

-When NetWare 4 or above file server is selected, print server mode will be automatically selected.

10(A). Select printing mode. <NetWare 3 or below>

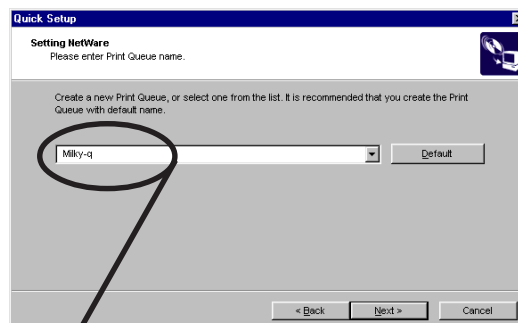


<Remote printer mode>

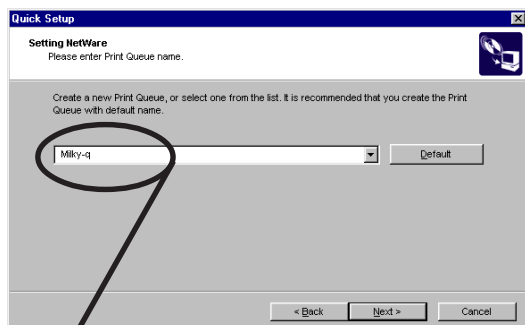


Select print server.

<Print server mode>

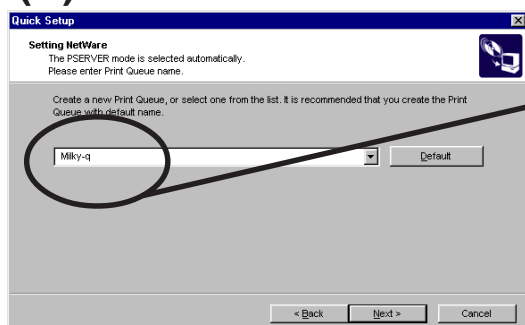


Type print queue name.



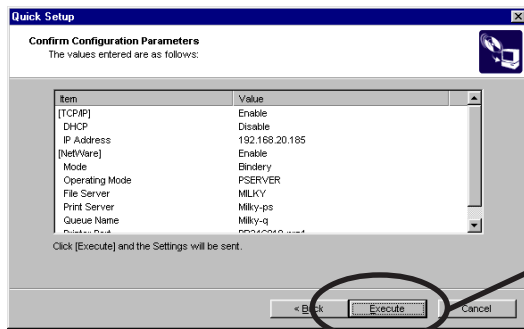
Type print queue name.

10(B). Type print queue name. <NetWare 4 or above>



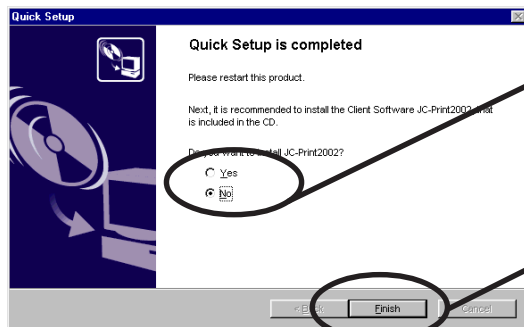
Type the print queue name.

11. Verify the configuration parameters.



Click **Execute**.

12. Setup is complete.



Select **No**.

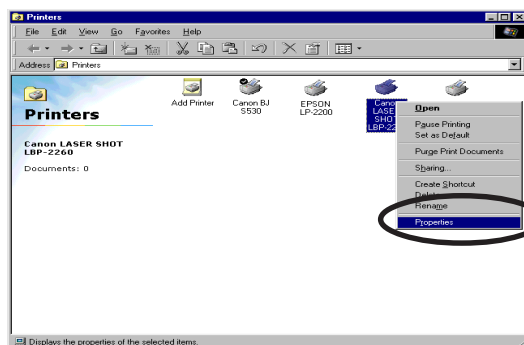
Click **Finish**.

Configuring Printer Port

This section explains how to configure printer port to printer in Windows 95/98/Me.

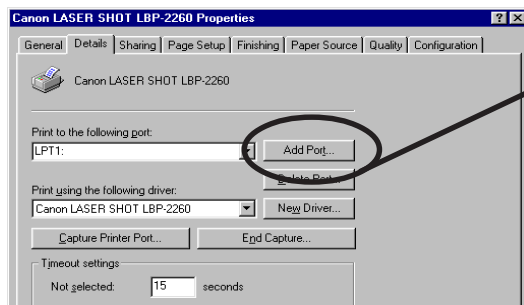
For configuring printer port in Windows NT 4.0, Windows 2000 or Windows XP, refer to the below description.

1. Click **Start**, then **Settings**, then **Printer**. Open the **Properties** of printer you use.

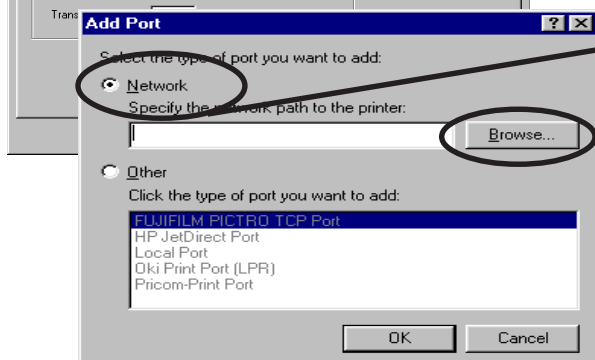


Select **Properties** of the printer to be used.

2. Move to **Details**.

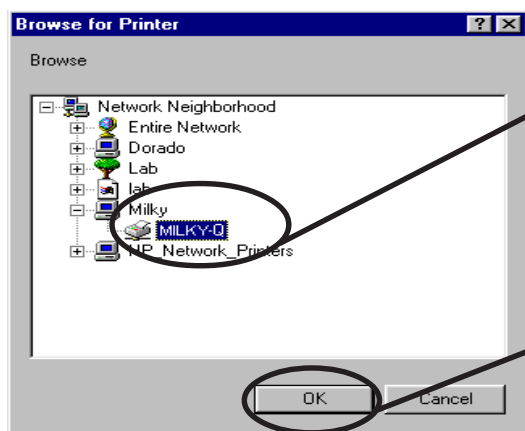


Select **Add Port**.



Select **Network** and Click **Browse**.

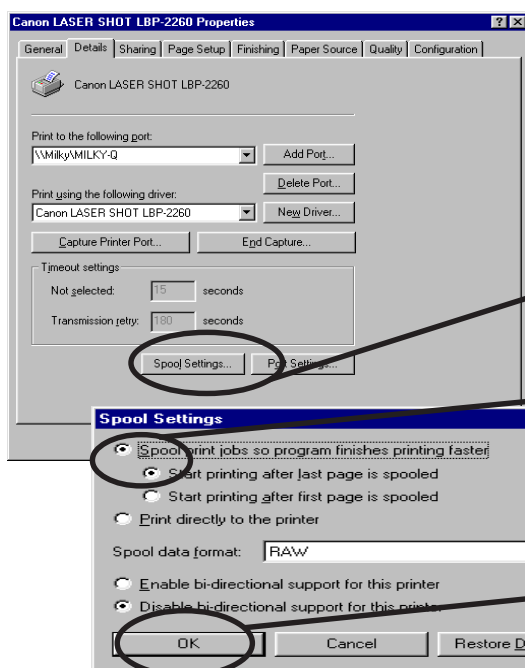
3. Assign a print queue to the printer port.



Select the print queue to use.

Click **OK**.

4. Configure spool settings.



Select **Spool Settings**.

Select **Start printing after the last page is spooled**.

Click **OK**.

5. Configuration is complete. Click OK and close Properties.

Now, the printer can be used in NetWare environment.

Execute test print and confirm if it's printed properly.

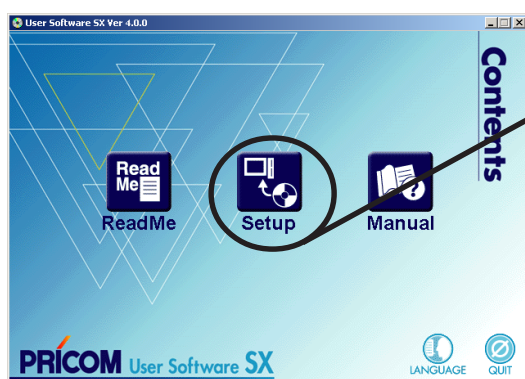
Using NDS Mode



-Only PRICOM 3100 supports NDS connection.

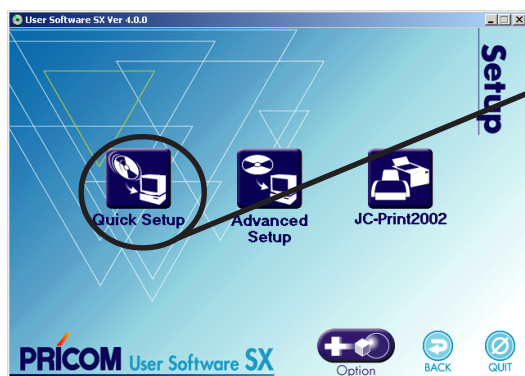
Configure Using Quick Setup

1. Insert the User Software SX in the CD-ROM drive of your Windows PC. The main menu screen will be displayed.



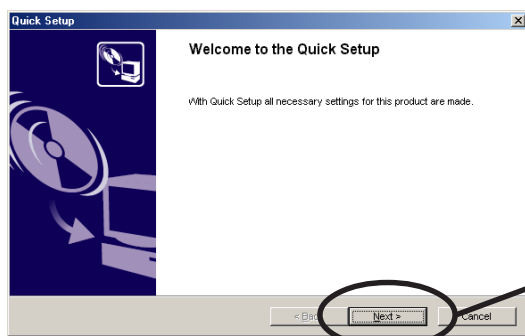
Select **Setup**.

2. The below screen will be displayed.



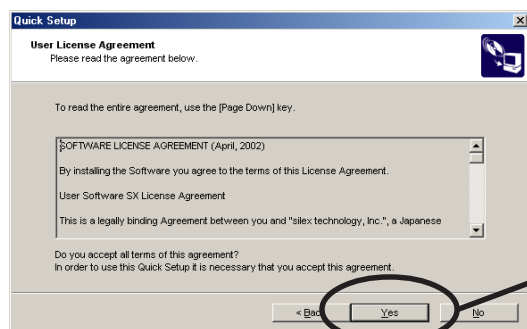
Select **Quick Setup**.

3. Quick Setup loads.



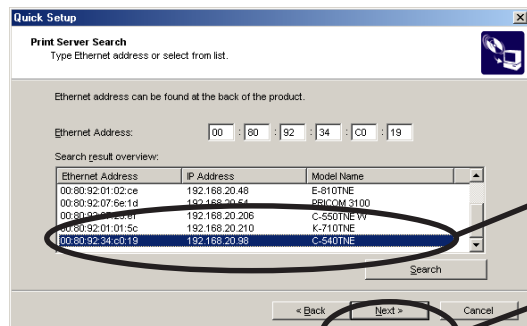
Click **Next**.

4. Confirm the Software License Agreement.



Read the agreement and click **Yes** if you accept it.

5. Select PRICOM to be configured.



Select PRICOM to be configured.

Click **Next**.



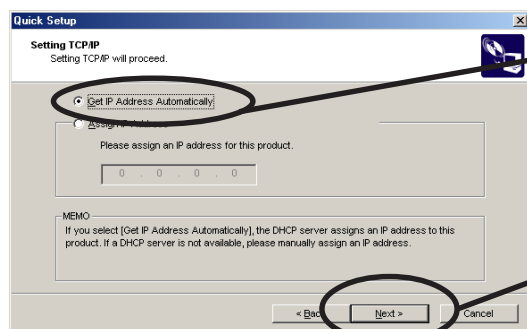
NOTE

-If PRICOM does not appear in the list, click **Search**. You can search PRICOM by typing in Ethernet address directly.

6. Assign an IP address.

When you have DHCP server in your environment

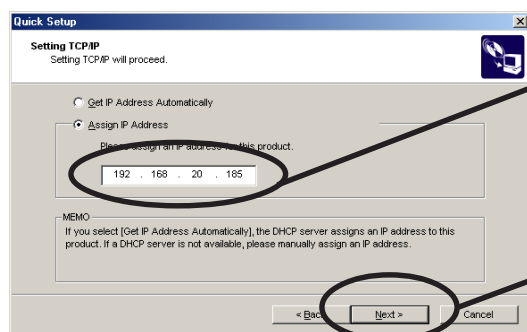
(A) Obtain an IP address from DHCP server automatically.



Select **Get IP address automatically**.

Click **Next**.

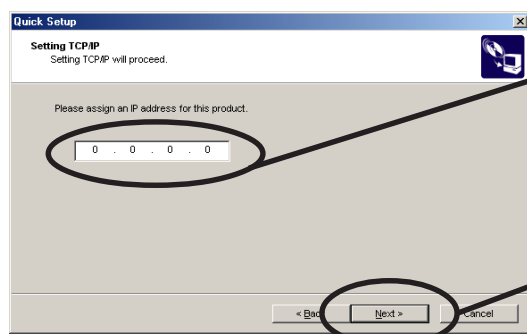
(B) Assign an IP address manually.



Assign the optional IP address.

Click **Next**.

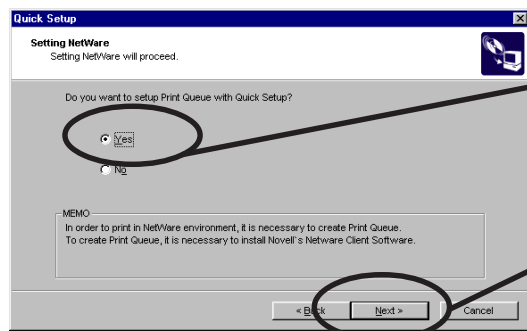
When you do not DHCP server in your environment.



Assign the optional IP address.

Click **Next**.

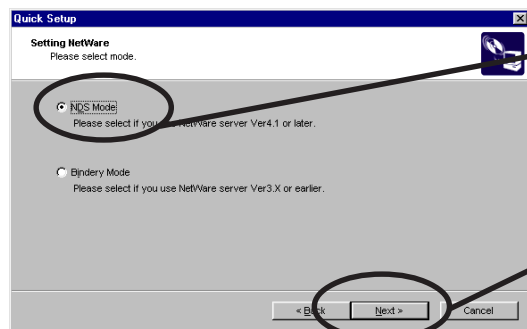
7. Configure NetWare.



Click **Yes**.

Click **Next**.

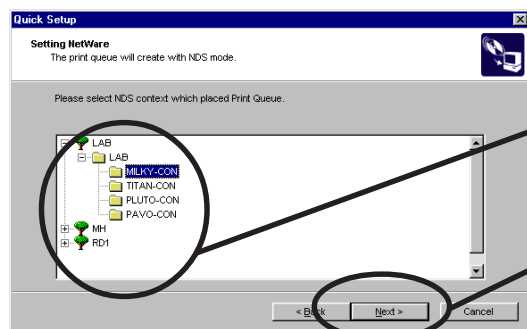
8. Select the operation mode of NetWare server.



Select **NDS mode**.

Click **Next**.

9. Select the NDS context for which the print queue is to be created.



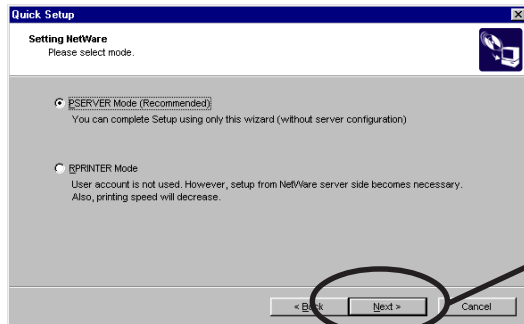
Select NDS context.

Click **Next**.



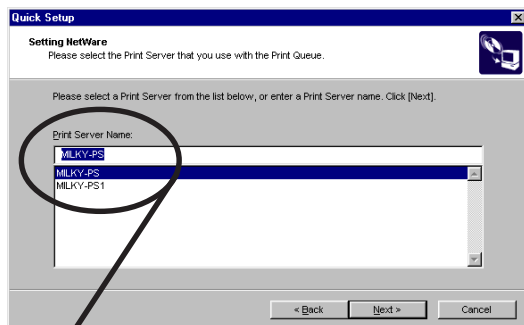
- The next screen to be displayed vary depending on if NDS supported or not.
- NDS support will go to ->10 (A)
- NDS non-support will go to ->10 (B)
- When NDS non-support, remote printer mode will be automatically selected.

10(A). Select printing mode. <NDS support>



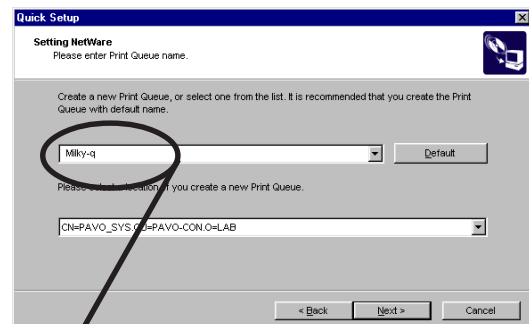
Click **Next**.

<Remote printer mode >

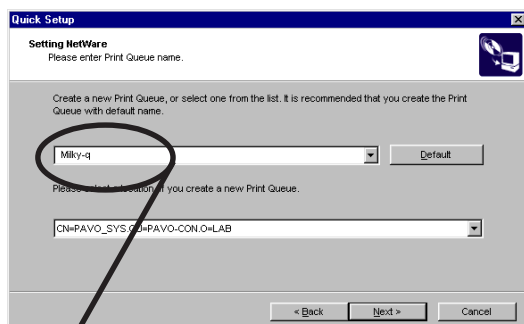


Select print server.

<Print server mode>

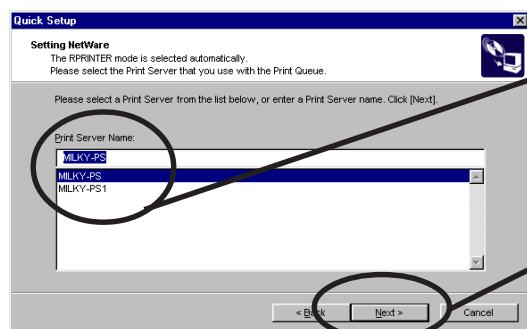


Type print queue name.



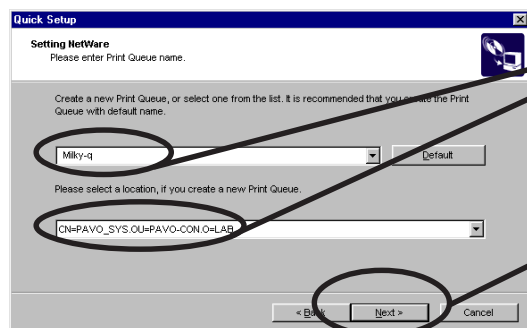
Type the print queue name.

10(B). Select the print server. <NDS non-support>



Select the print server.

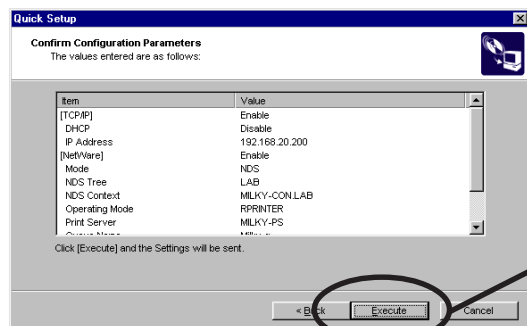
Click **Next**.



Type the print queue name.

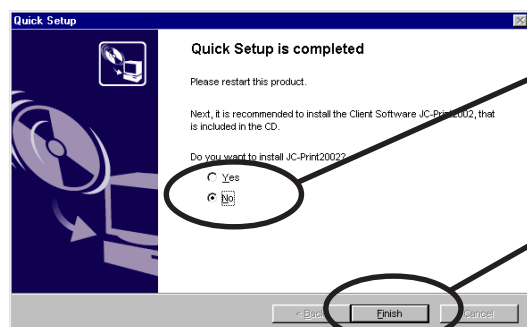
Click **Next**.

11. Verify the configuration parameters.



Click **Execute**.

12. Configuration is complete.



Select **No**.

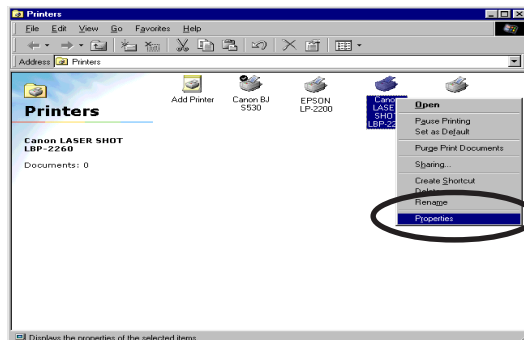
Click **Finish**.

Configuring Printer Port

This section explains how to configure printer port to printer in Windows 95/98/Me.

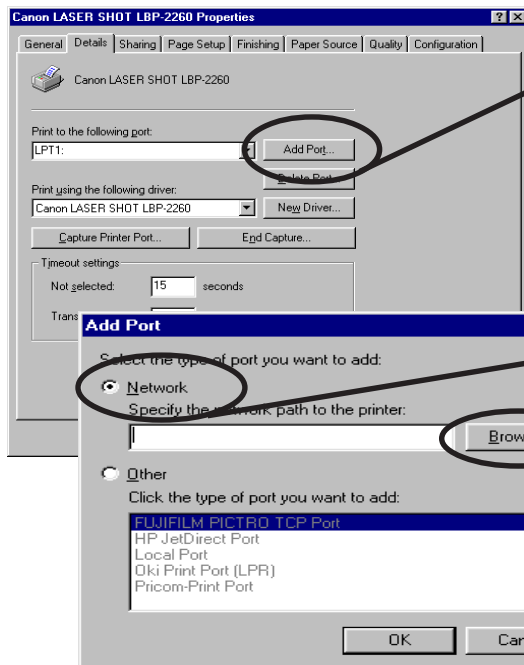
For configuring printer port in Windows NT 4.0, Windows 2000 or Windows XP, refer to the below description.

1. Click **Start**, then **Settings**, then **Printer**. Open the **Properties** of printer you use.

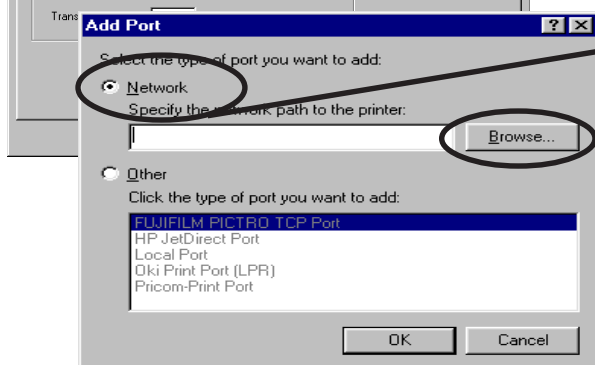


Select **Properties** of the printer to be used.

2. Move to **Details**.

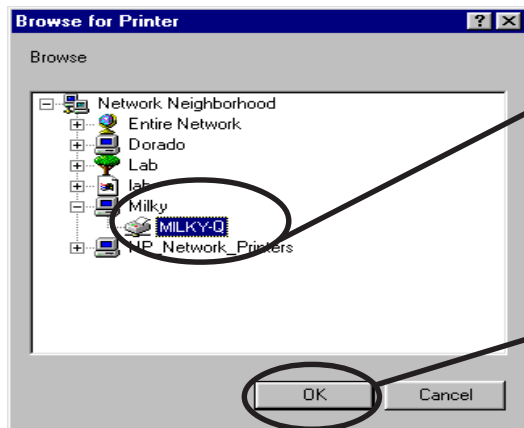


Select **Add Port**.



Select **Network** and Click **Browse**.

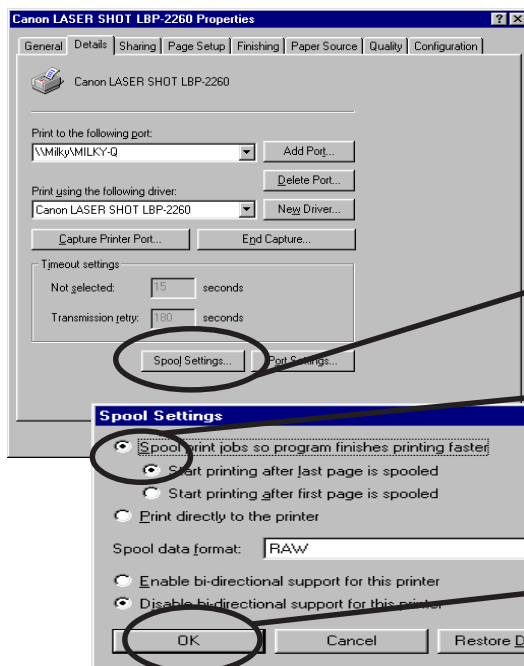
3. Assign a print queue to the printer port.



Select the print queue to use.

Click **OK**.

4. Configure spool settings.



Select **Spool Settings**.

Select **Start printing after the last page is spooled**.

Click **OK**.

5. Configuration is complete. Click OK and close Properties.

Now, the printer can be used in NetWare environment.

Execute test print and confirm if it's printed properly.

Printing Mode

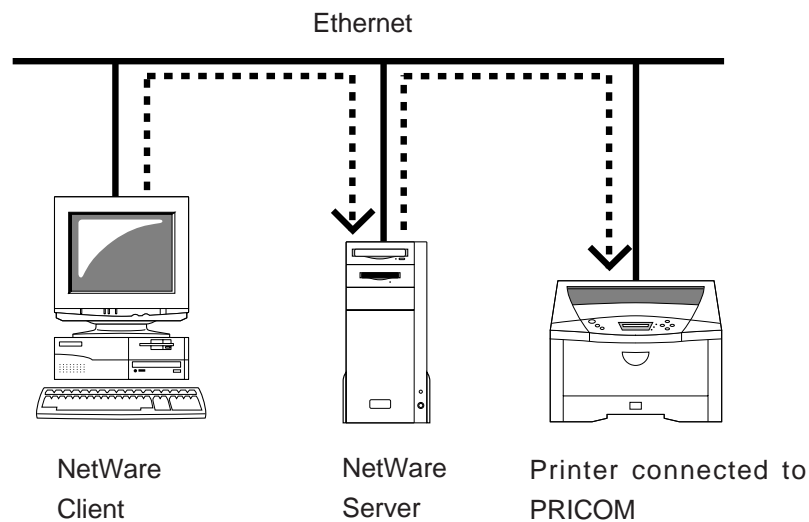
This section explains about print server mode and remote printer mode.

Print Server Mode

When PRICOM is used in print server mode, no other print server (PC on NetWare server or a PC exclusively used for print server) is required. PRICOM operates in the following way when in the print server mode.

1. A print job is spooled from the client to the NetWare server.
2. PRICOM derives a job directly from the NetWare server.
3. Printing starts.

<Job flow>



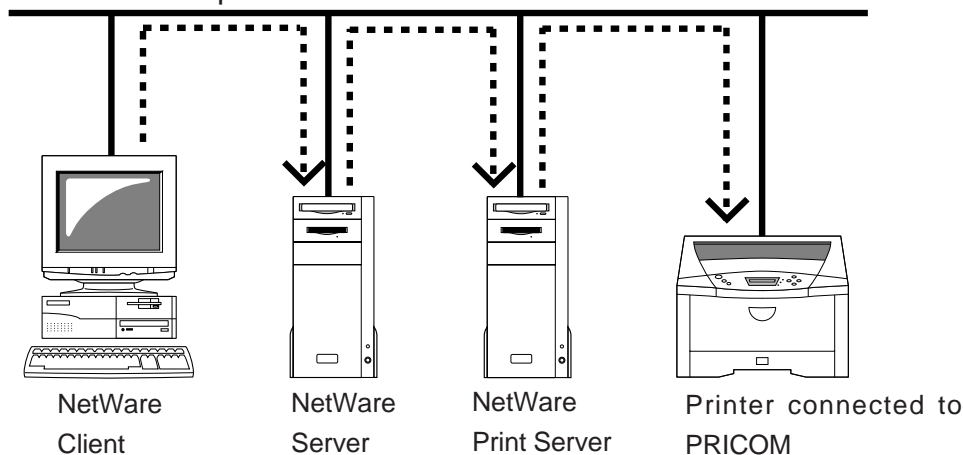
Remote Printer Mode

When using PRICOM in remote printer mode, other print servers (PC on NetWare server or a PC exclusively used for print server) are required. This mode makes use of NetWare normal printing feature (PSERVER.EXE/PSERVER.NLM). Printing in remote printer mode proceeds as follows.

1. Spool the print job from the client to NetWare server.
2. The Print server (PC on NetWare server or a PC exclusively used for print) derives the job from the Netware server.
3. The Print server transfers the job to the printer assigned to the print queue.
4. Printing starts.

<When PSERVER.EXE>

One PC functions as a print server.



<When PSERVER.NLM>

NetWare server functions as a print server

