

3. Using PRICOM in Windows 95/98/Me

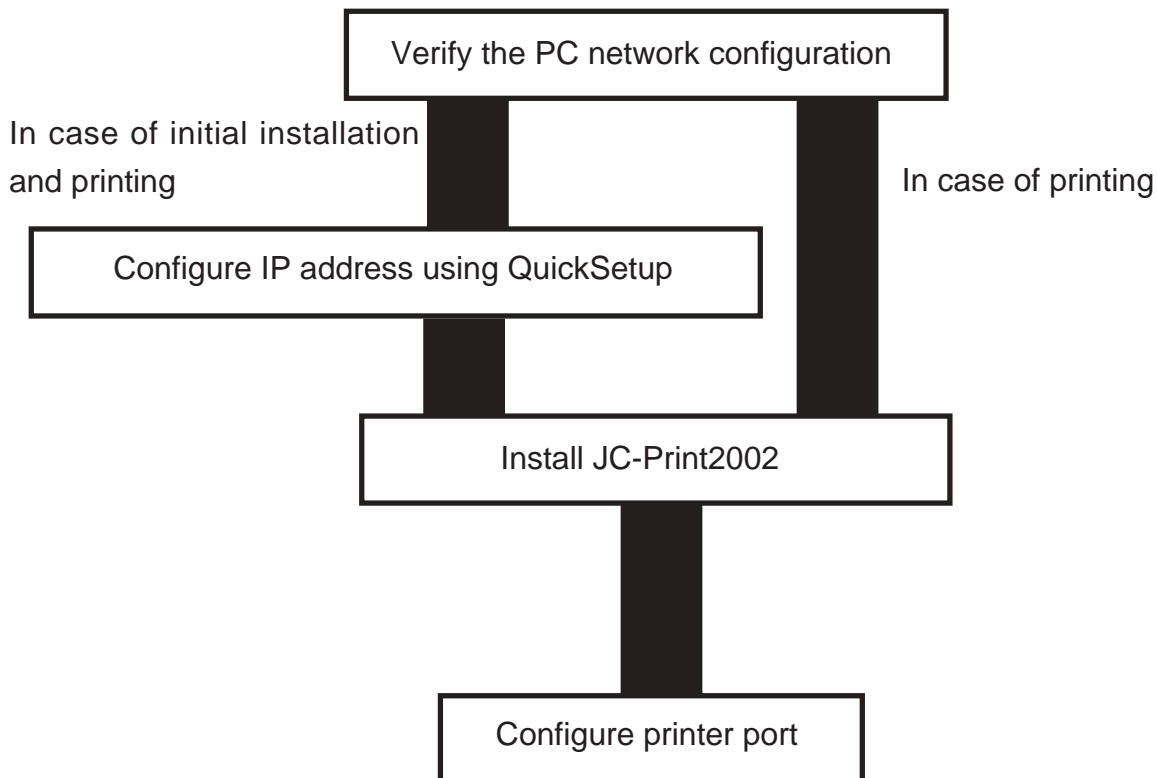
This chapter explains how to print using TCP/IP, NetBEUI and NetBIOS over TCP/IP protocol of Windows 95/98/Me.

Print Using TCP/IP of Windows 95/98/Me

Following indicates how to print using TCP/IP protocol.



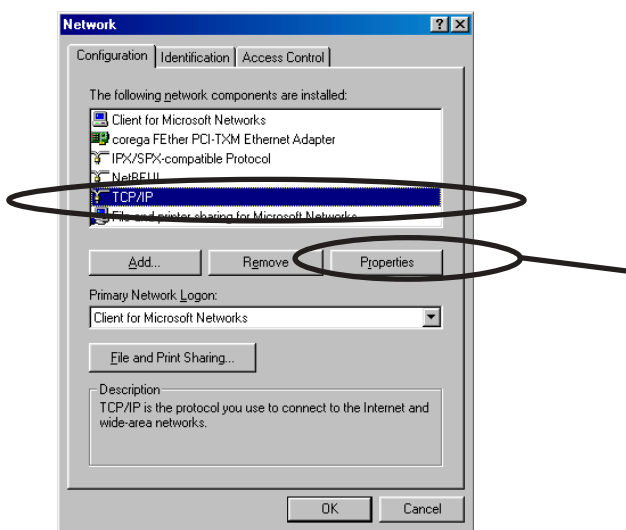
-Make sure to install printer driver before you start using PRICOM.



Verify the PC Network Configuration

Make sure that the **TCP/IP** and **Microsoft TCP/IP Printing** are added to the **Services**.

1. Click **Start**, then **Settings**, then **Control Panel**.
2. Double-click **Network**.
3. Verify that **TCP/IP** is included in *The following network components* are installed.



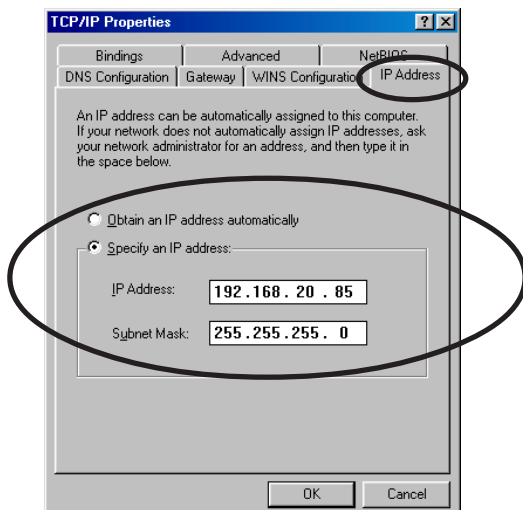
Click **Properties**.



NOTE

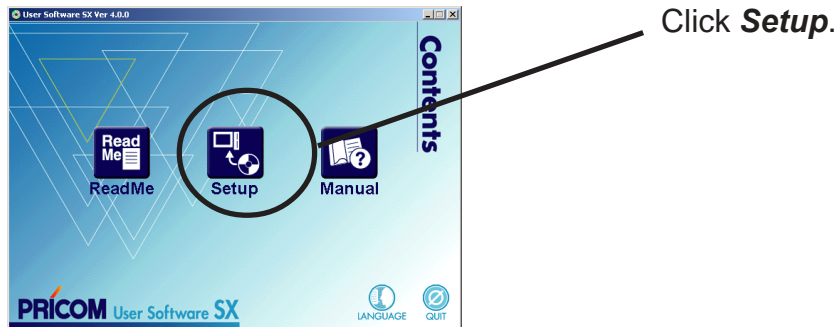
-If **TCP/IP** Protocol is not in *The following network components are installed*, click **Add**, then **Network component**, then **Protocols**, then **Microsoft TCP/IP** to add **TCP/IP**.

4. Verify if the configuration is proper for your environment in **IP Address**.

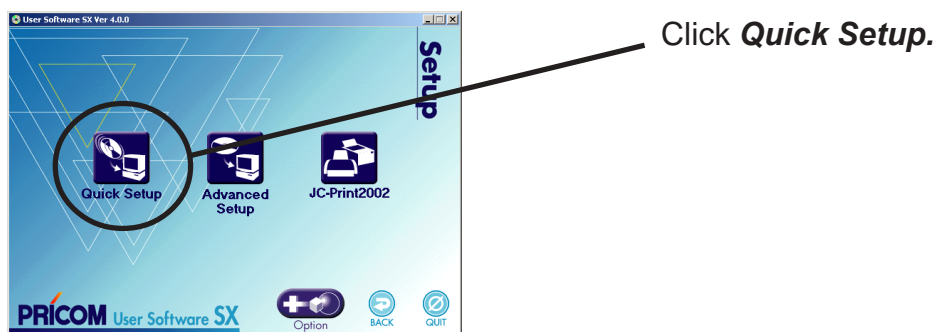


Quick Setup

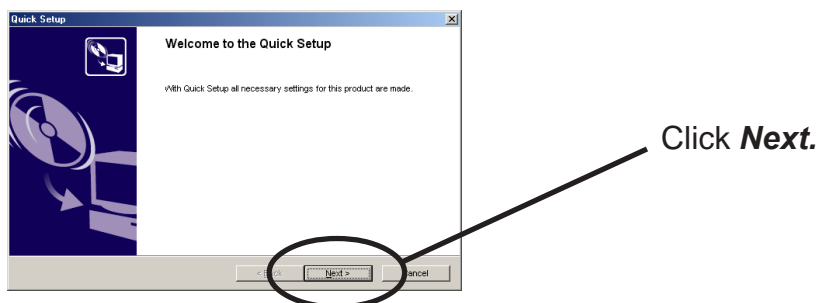
1. Insert the User Software SX in the CD-ROM drive of your Windows PC. The main menu screen will be displayed.



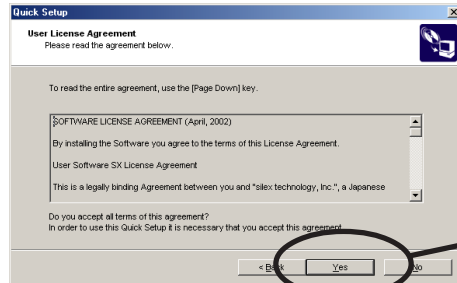
2. The below screen will be displayed.



3. Quick Setup loads.

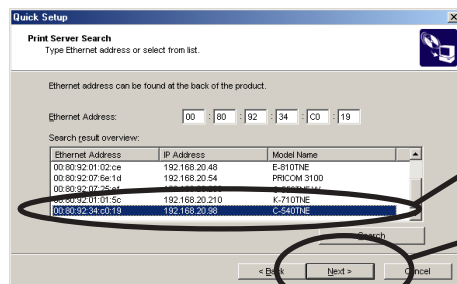


4. Confirm the Software License Agreement.



Read the agreement and click **Yes** if you accept it.

5. Select PRICOM to be configured.



Select PRICOM to be configured.

Click **Next**.

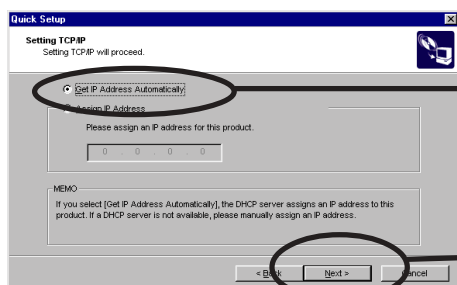


-If the PRICOM does not appear in the list, click **Search**.
You can search the PRICOM by typing in Ethernet address directly.

6. Assign an IP address

When you have DHCP server in your environment.

(A) Obtain an IP address from DHCP server automatically.



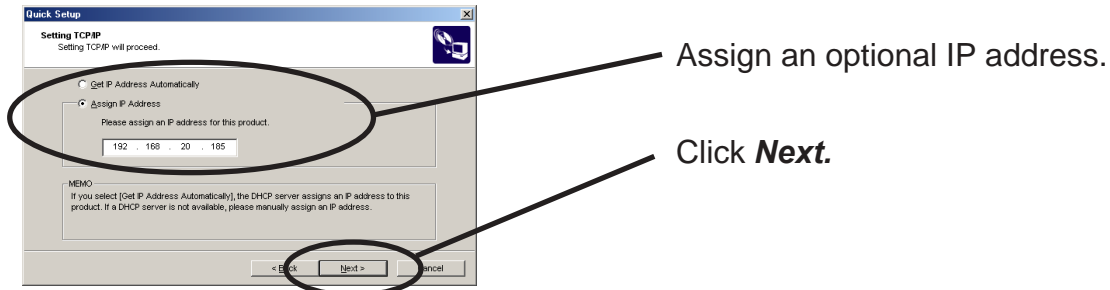
Click **Get IP Address Automatically**.

Click **Next**.



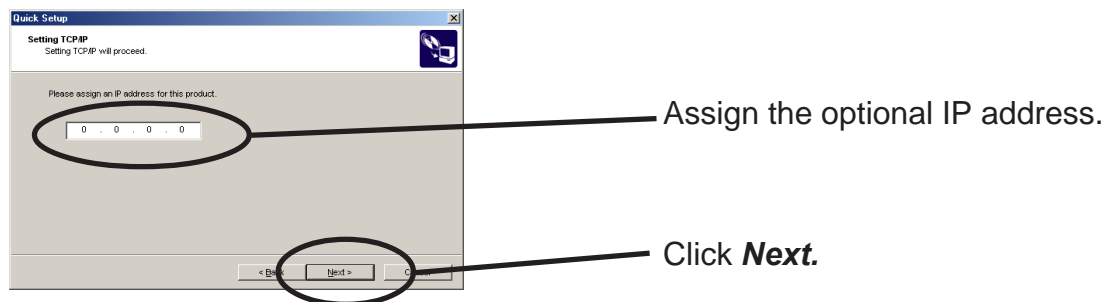
-If NetWare Client is installed and PRICOM is supporting NetWare (Enable), NetWare configuration screen will appear.

(B) Assign an IP address manually.



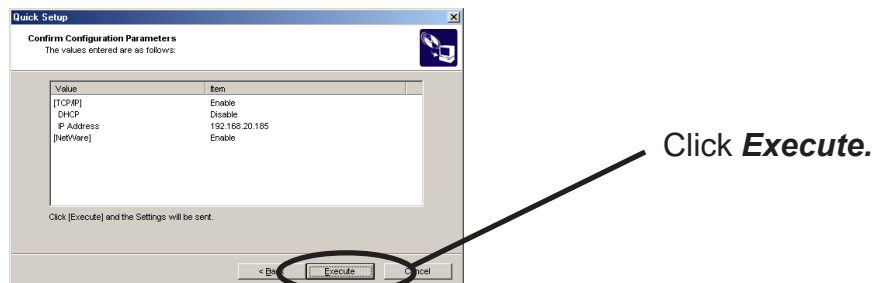
-If NetWare Client is installed and PRICOM is supporting NetWare (Enable), NetWare configuration screen will appear.

When you do not have DHCP server in your environment.

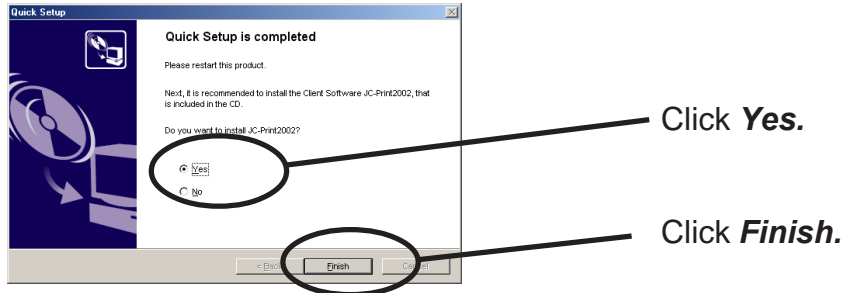


-If NetWare Client is installed and PRICOM is supporting Netware (Enable), NetWare configuration screen will appear.

7. Verify the configuration parameters.



8. Setup is complete.



-Proceed to install JC-Print2002.

JC-Print2002 is a printing software that enables user to execute printing directly from Windows.

Install JC-Print2002

To print directly from Windows 95/98/Me environment using TCP/IP protocol, use the JC-Print2002 bundled with PRICOM.

JC-Print2002 is a printing software that enables users to use LPR (dedicated to silex products), IPP and Raw (9100) port. JC-Print2002 also records PRICOM Monitor SX.

When installation is complete, the wizard to add printer port to be stored.



-LPR (Line Printer Remote)

A widely used protocol that enables users to execute printing to printers on the local area network (LAN).

-IPP (Internet Printing Protocol)

This protocol enables users to execute printing to network printers remote via Internet.

-Raw (9100) port

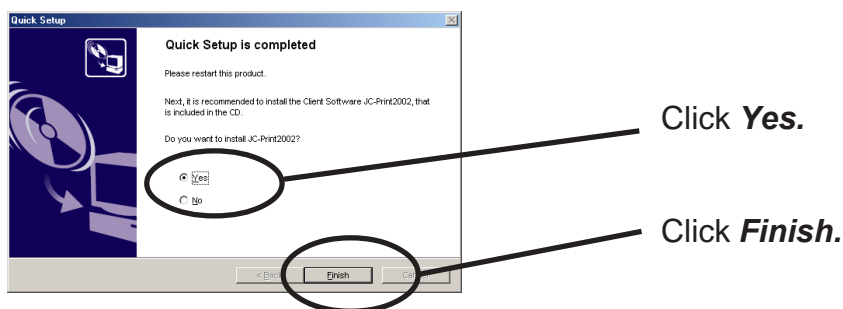
This function enables users to execute printing to printers on the local area network (LAN). Information can be printed at a high speed without spool.

-PRICOM Monitor SX

You can check the printer status with this monitor. For more details, refer to " 9. PRICOM Monitor SX".

1. Verifying installing method.

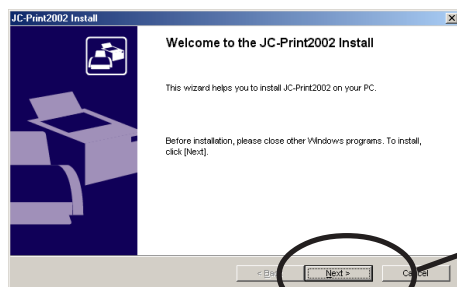
(A) Install JC-Print2002 following Quick Setup.



(B) Install JC-Print2002 .

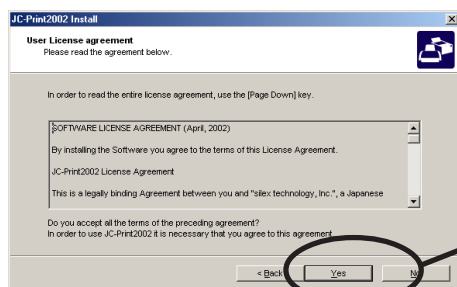


2. JC-Print2002 installation wizard to be started.



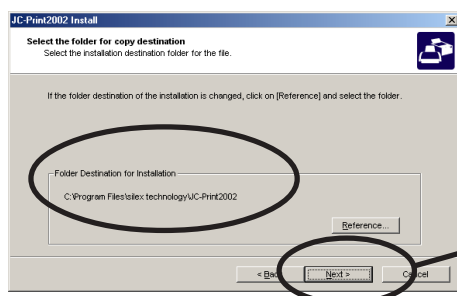
Click **Next**.

3. Confirm the Software License Agreement.



Read the agreement and click **Yes** if you accept it.

4. Verify the Destination Directory.



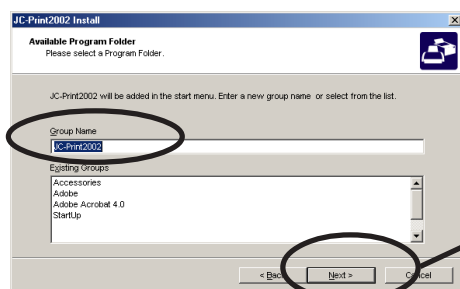
Click **Next**.



NOTE

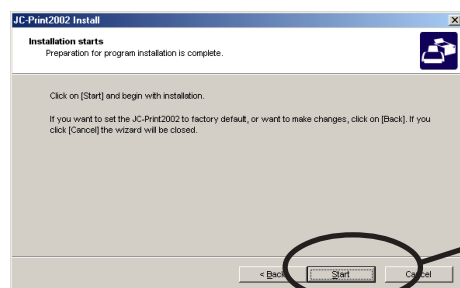
-Click **Reference** to specify the destination directory.

5. Specify the group name to be registered at the start menu.



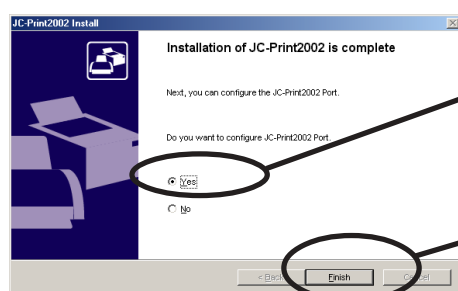
Click **Next**.

6. Installation to be started.



Click **Start**.

7. Configuration is complete.



Select **Yes..**

Click **Finish**.

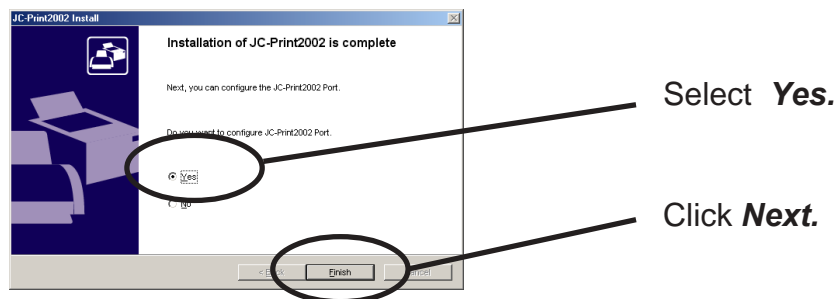
Adding Printer Port

JC-Print2002 has three available options for printing; "**Print using LPR**", "**Print using IPP**" and "**Print using Raw Mode**".

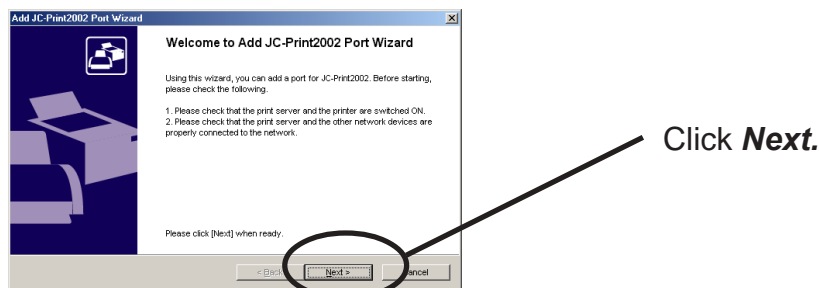
Select the protocol to be used for printing, then click "**Next**" to start using the specified printing option.

(A)

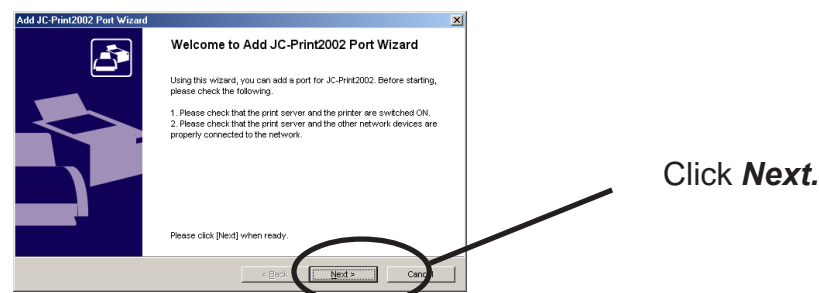
1. Adding printer port following the JC-Print2002 installation.



2. JC-Print2002 port adding wizard starts,

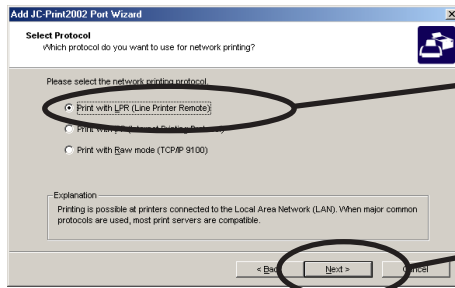


(B) Click **Start**, then **Programs**, then **JC-Print2002**, then **JC-Print2002 Port adding**.



Adding JC-Print2002 LPR Port

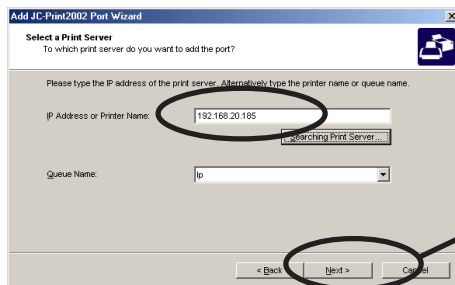
1. Select **LPR (Line Printer Remote)**.



Select **Print with LPR (Line Printer Remote)**.

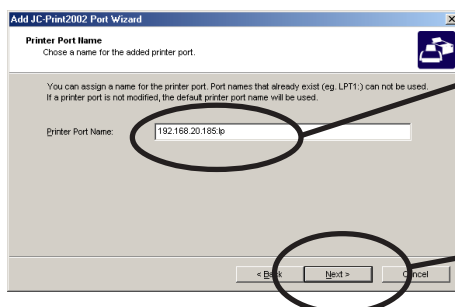
Click **Next**.

2. Display the list of print servers on the network by clicking **Searching Print Server**. Select PRICOM you want to configure.



Click **Next**.

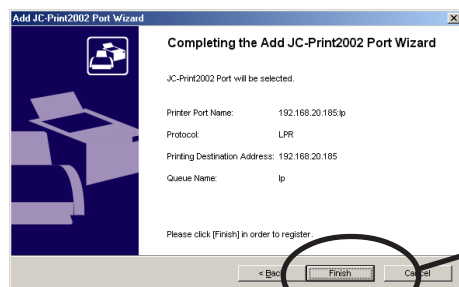
3. Type in printer port name.



If you do not want to have a specific name, use the default printer port name.

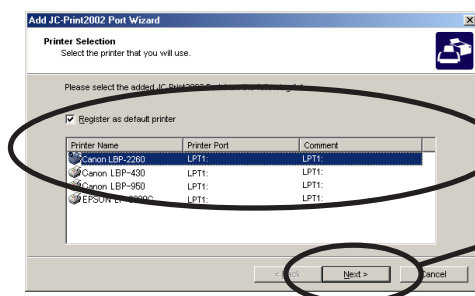
Click **Next**.

4. Verify the configuration.



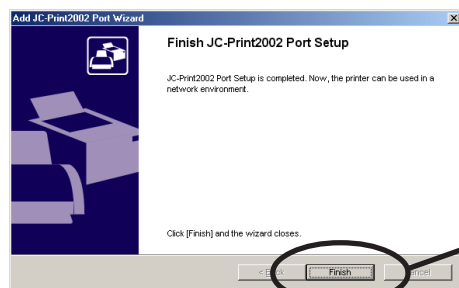
Click **Finish**.

5. Select the printer you want to use with PRICOM.



Click **Next**.

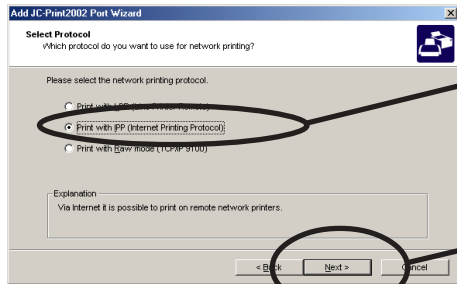
6. Port configuration is complete.



Click **Finish**.

Adding JC-Print2002 IPP Port

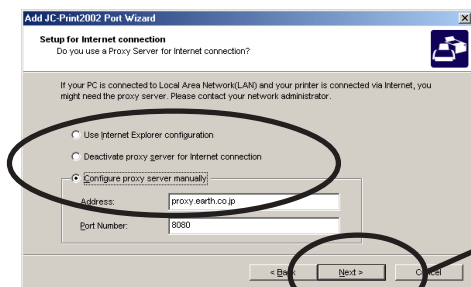
1. . Select IPP (Internet Printing Protocol).



Select **Print with IPP (Internet Printing Protocol)**.

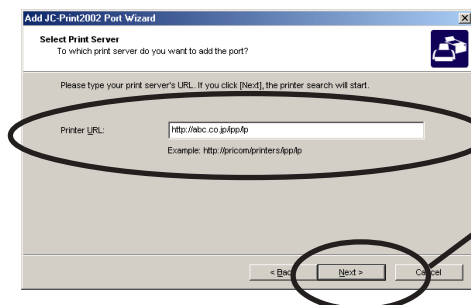
Click **Next**.

2. Select either **Use Internet Explorer configuration**, **Deactivate proxy server for Internet connection** or **Configure proxy server manually**.



Click **Next**.

3. Type in URL assigned to PRICOM for **Printer URL**. PRICOM IPP printer URL is "/ipp" or "/ipp/lp".



Click **Next**.

Ex.): When URL is "abc.co.jp",
http://abc.co.jp/ipp/lp

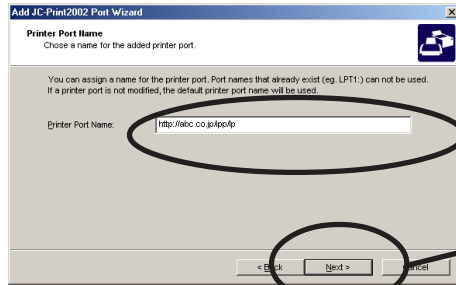
Ex.) When IP address is
"192.168.20.185",
http://192.168.20.185/ipp/lp



NOTE

-If you click **Next**, you can make sure if specified URL exists..

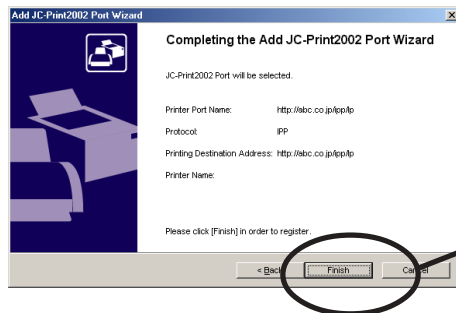
4. Configure the port name for printing.



If you do not want to have a specific name, use the default printer port name.

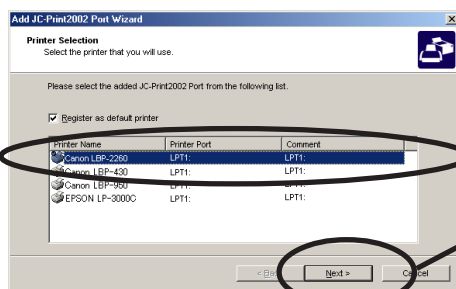
Click **Next**.

5. Verify the configuration.



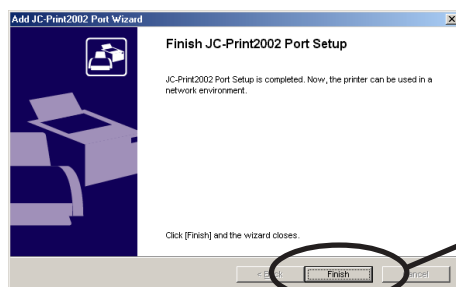
Click **Finish**.

6. Select the printer you want to use with PRICOM.



Click **Next**.

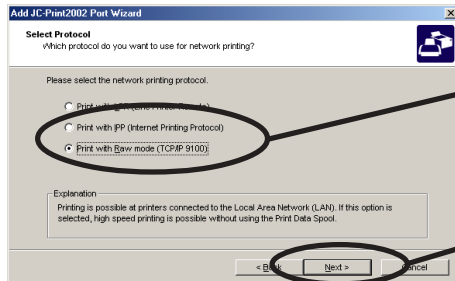
7. Configuration is complete.



Click **Finish**.

Adding JC-Print2002 Raw (9100) Port

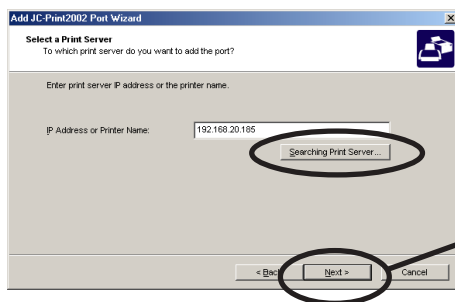
1. Select Raw mode.



Select **Print with Raw mode (TCP/IP 9100)**.

Click **Next**.

2. Display the list of print servers on the network by clicking **Searching Print Server** Select PRICOM you want to configure.



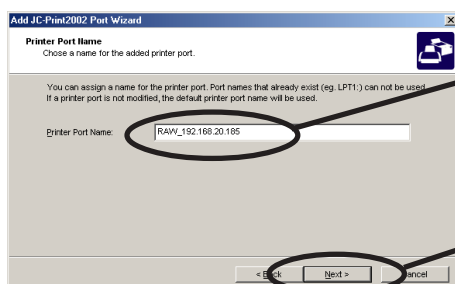
Click **Next**.



NOTE

-To verify if the specified print server can access 9100 port, click **Next**.

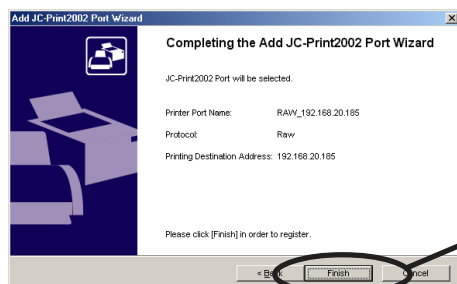
3. Type in print port name.



If there is no problem, use the default printer port name (RAW_IP address).

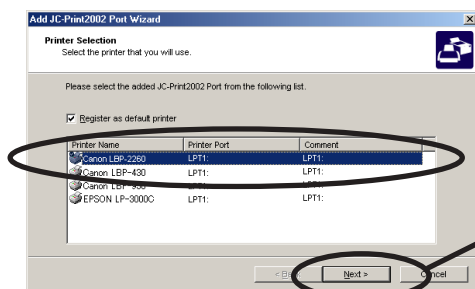
Click **Next**.

4. Verify the configuration.



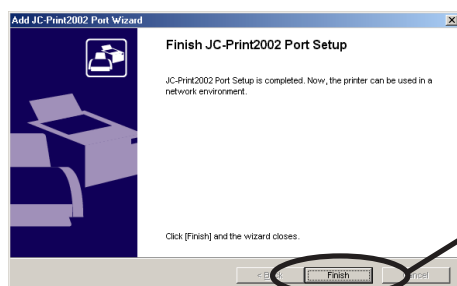
Click **Finish**.

5. Select the printer you want to use with PRICOM.



Click **Next**.

6. Configuration is complete.



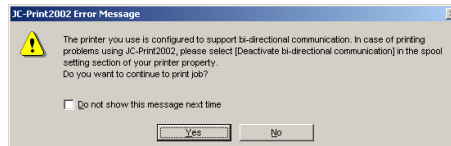
Click **Finish**.

Configuring printer driver

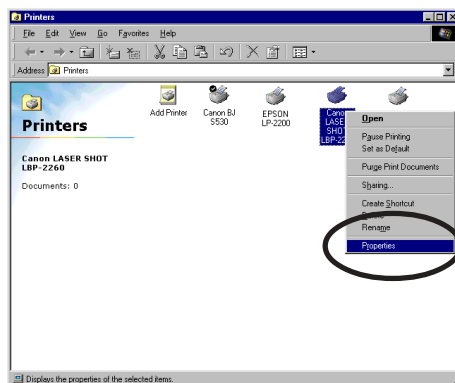
This section explains how to configure printer driver.



-If you do not configure printer driver, the following error dialog may appear.
In this case, click **No** and configure printer driver by following steps.

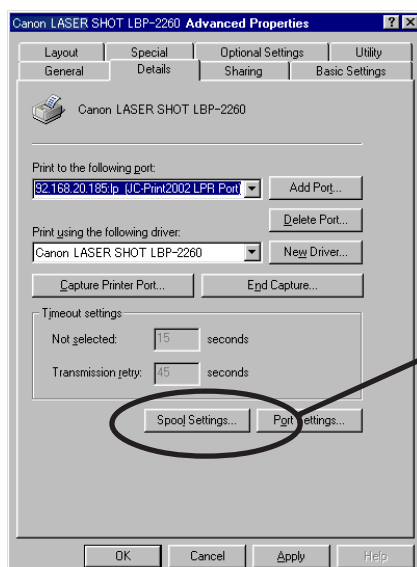


1. Click **Start**, then **Settings**, then **Printer**, then open the printer property.



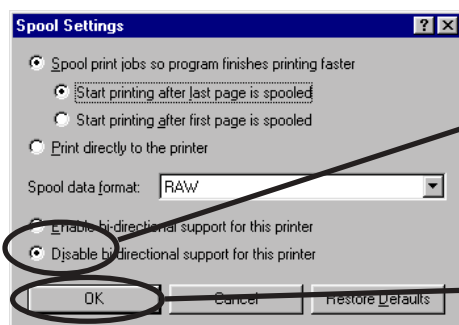
Select **Properties**.

2. Select **Details**.



Select **Spool Settings**.

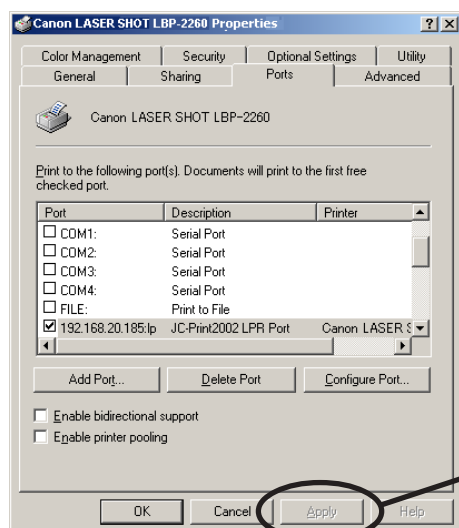
3. Select **Disable bidirectional support for this printer.**



Select **Disable bidirectional support for this printer.**

Click **OK**.

4. Configuration is complete.



Click **Apply**.

Print Using NetBEUI, NetBIOS over TCP/IP of Windows 95/98/Me

Follow the steps shown below to print from Windows 95/98/Me environment using NetBEUI, NetBIOS over TCP/IP protocol.



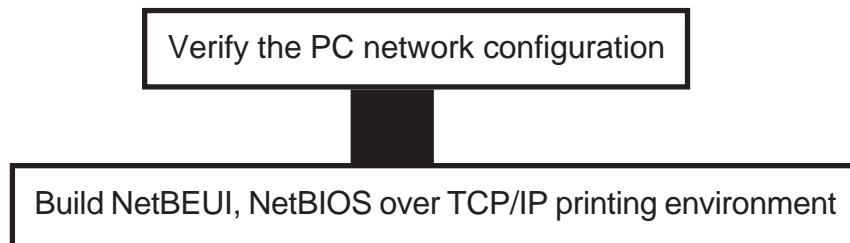
TIP

-Only PRICOM 3100 supports printing using NetBIOS over TCP/IP.



NOTE

- Make user to install printer driver before you start using PRICOM.
- For further information on NetBEUI, NetBIOS over TCP/IP configuration, refer to Chapter 8 Functions for Configuration.



Verify the PC Network Configuration (NetBEUI)

Make sure that **NetBEUI** and **Microsoft network shared service** are added to **Network** of Windows 95/98/Me.

1. Click **Start**, then **Settings**, then **Control Panel**.
2. Double-click **Network** icon.
3. Verify that **NetBEUI** and **File and printer sharing for Microsoft Network** are added to the network component list.



NOTE

-If NetBEUI protocol is not in the current network component list, click **Add**, then **Protocol**, then **Microsoft**, then **NetBEUI** to add **NetBEUI**. If **File and printer sharing for Microsoft Network** is not in the current network component list, click **Services**, then **File and printer for Microsoft Network** to add File and printer sharing for Microsoft Network.

Verify the PC Network Configuration (NetBIOS over TCP/IP)

Make sure that **TCP/IP** and **Microsoft network client** are added to **Network** of Windows 95/98/Me and verify if NetBIOS over TCP/IP is usable at **TCP/IP** properties.

1. Click **Start**, then **Settings**, then **Control Panel**.

2. Double-click **Network**.

3. Verify that **TCP/IP** and **Microsoft network client** are added to **Network**.



-If **TCP/IP** is not in **The following network components are installed**, click **Add**, then **Protocols**, then **Microsoft**, then **TCP/IP**.

-If Microsoft network client is not in **The following network components are installed**, click **Services**, then **Microsoft network client**.

4. Open **TCP/IP** properties, then select **NetBEUI**, then verify if **Enable NetBIOS on TCP/IP** is checked.

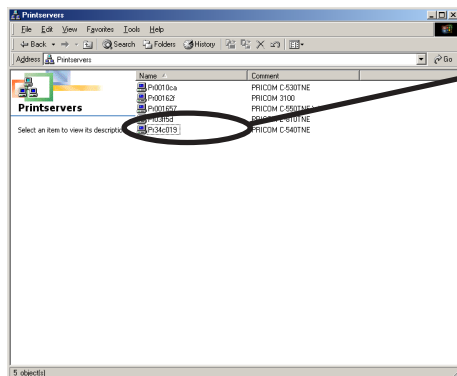


-In the default, Enable NetBIOS on TCP/IP is generally checked.

Print Using NetBEUI, NetBIOS over TCP/IP

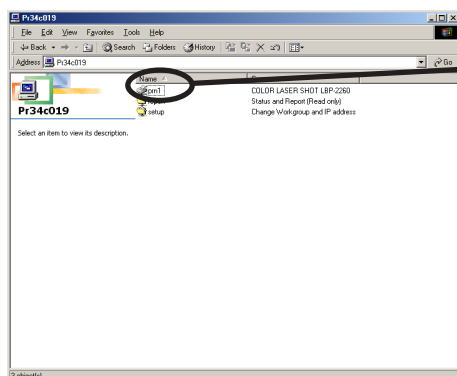
1. Double-click **Network computer**, then open work group name; [**PrintServers**] in the **Whole Network**.

2.



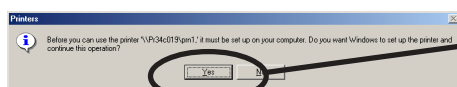
Double-click the computer (PRICOM).

3.



Double-click the printer.

4. Display printer configuration screen.



Click **Yes**.

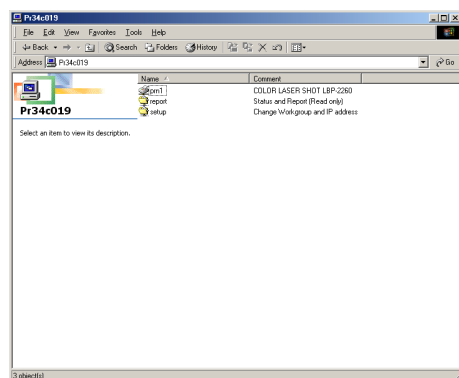
5. Printer add wizard to be started. Follow the instructions given by the wizard to complete configuration. If you get the printer test page, adding printer is complete.

About NetBEUI, NetBIOS over TCP/IP

Structure of NetBEUI, NetBIOS over TCP/IP work group

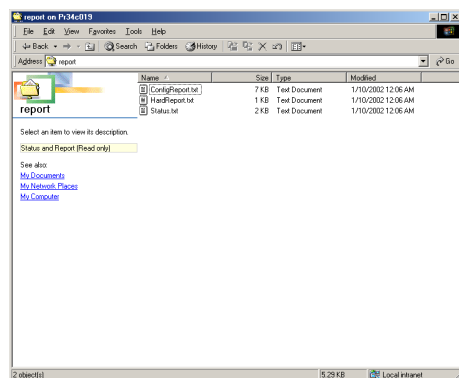
This section explains about the structure of NetBEUI work group installed in PRICOM.

Ex.) : PRICOM Ethernet address: 00:80:92:34:c0:19



\\Pr34c019: Computer (PRICOM)

\\Pr34c019\prn1: Printer



\\Pr34c019\report\ConfigReport.txt:

Settings report (read only)

\\Pr34c019\report\Status.txt:

Diagnostic report (read only)

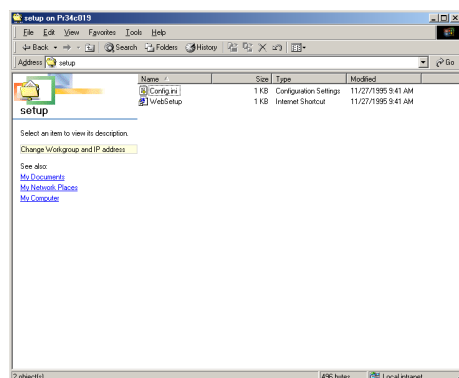
\\Pr34c019\report\HardReport.txt:

System status report (read only)



TIP

-Only PRICOM 3100 displays [HardReport. txt] in [report] folder.



\\Pr34c019\setup\Config.ini:

Initial setting file (can be edited)

\\Pr34c019\setup\WebSetup:

Shortcut file (read only)

- Configuration report

Outputs the internal information in the PRICOM when activated.

- System status report

Outputs the information on PRICOM status when activated.

- Initial configuration file

With the initialization file, **Work group name** and **IP address** can be described. Use editor like memo pad to edit and save files in the overwrite mode. In a few seconds, PRICOM automatically resets and reboots.

By editing the initialization file and saving the file in the overwrite mode, you can change work group name and IP address.

Ex.)

Workgroup=UserGroup

IP address=192.168.20.126

Specify work group name that already exist in the whole network. In case IP address is to be automatically assigned by using DHCP/BOOTP and RARP server, the IP address typed in [IP address] will be invalid.

- Shortcut file

Once PRICOM is given IP address, shortcut (WebSetup) is created. When double-clicking the shortcut icon, web browser to be activated and PRICOM homepage to be displayed.



NOTE

-For the Web browser, refer to Chapter 8.