

# PRICOM 7000 Series

## A P P L I A N C E S E R V E R

### MAXIMIZE NETWORK FUNCTIONALITY

The PRICOM 7000 appliance server is the ideal multifunction network solution for the home, small office network and enterprise network. Built on the Linux real time operating system, the PRICOM 7000 is loaded with functionality that makes managing printers, up to five locally connected printers – one parallel and four USB. It's equipped to handle DHCP and DNS server functions for automatic IP address assignment (dynamic/static) and domain name configuration for up to 20 network clients freeing up PC resources currently dedicated to server functions. It supports IEEE1284 full bi-directional parallel or the latest USB 2.0 high-speed Interface.

### NETWORK SCANNING SIMPLIFIED\*

With silex's most advanced USB to Ethernet technology, the PRICOM 7000 converts a USB scanner to a shared resource on the network. The scanner's functionality is available across the network to users as if they were sitting at their PC with a scanner directly connected. Network scanning eliminates the need for dedicated PC for scanning.

\* For Windows 2000/XP only

### INTELLIGENT PRINT SERVICE

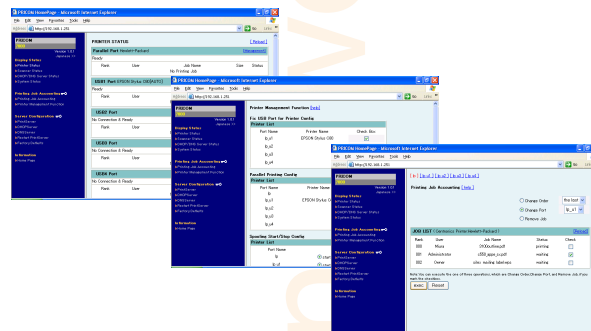
In addition to providing reliable, high-speed, auto-sensing 10 Base-T / 100 Base-TX network printing support, the PRICOM 7000 easily manages multiple print jobs for attached printers via a Web browser that interacts with the embedded print job spooling capabilities of the PRICOM 7000.

- Multi-port Print Server – Serving as a USB master device, the PRICOM 7000 supports networking of a parallel printer and up to four USB printers via a USB hub.

Print Server

Scanner Server

DHCP / DNS Server



**silex**  
technology

intelligent,  
intuitive  
network printing



- **Broadcast Printing\*** – A print job can be simultaneously directed to multiple printers. By sharing the workload across multiple printers, you save time on large volume print jobs. This is an ideal solution for small commercial printing facilities, in-house publishing departments or offices that want to shorten printing time on all jobs.
- **Print Job Control\*** – Spooled print jobs can be remotely managed allowing a user to delete spooled jobs, redirect a print job to a different printer and move a print job up or down in the queue.

\*This function is available only between same model printers or printers that support the same driver.

## CUSTOMIZATION MADE EASY

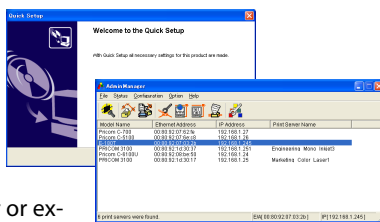
Customization of the PRICOM 7000 is never a problem. Designed using the Linux open-source operating system platform, additional functionality and custom features to support a workgroup, departmental or enterprise business network can easily be added.

Contact silex and talk with a customer application engineer about a printing solution for your specific needs.

## EASY TO SET UP, EASY TO MANAGE

The PRICOM 7000 appliance server uses an intuitive on-screen wizard to walk users through configuration, step by step. The configuration utility – Admin Manager – guides a network administrator or experienced user through the point-and-click steps to setting up and managing multiple devices on the network.

The PRICOM 7000 also monitors for and instantly alerts the network administrator to a variety of defined printer error conditions via a pop-up window message. The PRICOM 7000 firmware is easily updated so your technology investment is protected over the long term. Staying current is as simple as logging onto the silex web site and downloading the latest release.



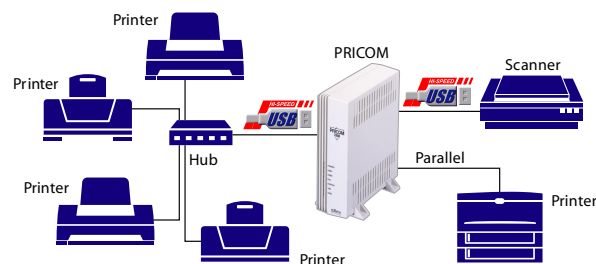
## ONLY GETTING BETTER

silex is actively developing additional upgradeable options for the PRICOM 7000 platform to meet a variety of printing and scanned data handling needs.

- Internal hard disk for increased spooling capacity and network storage
- Internal gigabit Ethernet option
- Internal 802.11x wireless card
- Internal wireless access point allows the PRICOM 7000 to be the central wireless access point for the home or small office or a multipurpose node in an enterprise

## TECHNICAL SPECIFICATIONS

<b>Operating System</b>	Linux	
<b>Supported OS</b>	Print server	Windows XP, Windows 2000, Windows NT 4.0, Windows 95/98/Me, UNIX/Linux
	Scanner server	Windows XP, Windows 2000
<b>Supported protocol</b>	TCP/IP	LPD, FTP, HTTP, TELNET, SNMP, DNS, DHCP, BOOTP, RARP, TCP, UDP, ARP, IP, ICMP
<b>Configuration</b>	Print server	Quick Setup utility, Admin Manager utility, Web Browser, TELNET
	Scanner server	PRICOM USB utility
<b>Device interface</b>	IEEE 1284 compliant parallel x 1 (bi-directional) USB 2.0 Hi-Speed A type x 2	
<b>ROM/RAM</b>	8MByte / 256MByte	
<b>Network interface</b>	10 Base-T / 100 Base-TX (Auto-detection)	
<b>Language</b>	English, Japanese	
<b>Warranty period</b>	2 years	
<b>Power supply</b>	Universal AC Adapter (100-240V)	
<b>Power consumption</b>	5V 4A	
<b>Regulatory approvals</b>	FCC, CE, VCCI Class A	
<b>Package contents</b>	PRICOM 7000 appliance server, Device foot stands, Quick Setup Guide poster, CD-ROM with configuration utilities and PDF manual, AC Adapter	
<b>Dimension (WxDxH)</b>	2.1 x 6.0 x 7.2 in / 55 mm x 154 mm x 184 mm	
<b>Weight</b>	23.6 oz / 670g	



## EXPANSION ROADMAP

Today, the server is a print spooler/scan-to-print device, but silex intends to expand it to a corporate device management product with the following functionality:

- Print spooler/scan-to-print
- Network printer data management
- Scanner data management (e-mail/print)
- Print job management software implementation
- Corporate device management

**PHASE 1**  
Appliance server with  
Print / Scan / DNS & DHCP

**PHASE 2**  
Printer / Scanned Data  
Management server

**PHASE 3**  
Imaging data / solution /  
device server



JQA-2667  
silex technology, Inc.

PRICOM is a registered trademark of silex technology Inc. Windows is a U.S. registered trademarks of Microsoft Corporation. Other product or brand names may be registered trademarks or trademarks of their respective owners. Technical information and specification are subject to change without notice.