

4. Using PRICOM in Windows NT 4.0, Windows 2000 and Windows XP

This chapter explains how to print using TCP/IP, NetBEUI and NetBIOS over TCP/IP protocol of Windows NT 4.0, Windows 2000 and Windows XP.

Print Using TCP/IP of Windows NT 4.0, Windows 2000 and Windows XP.

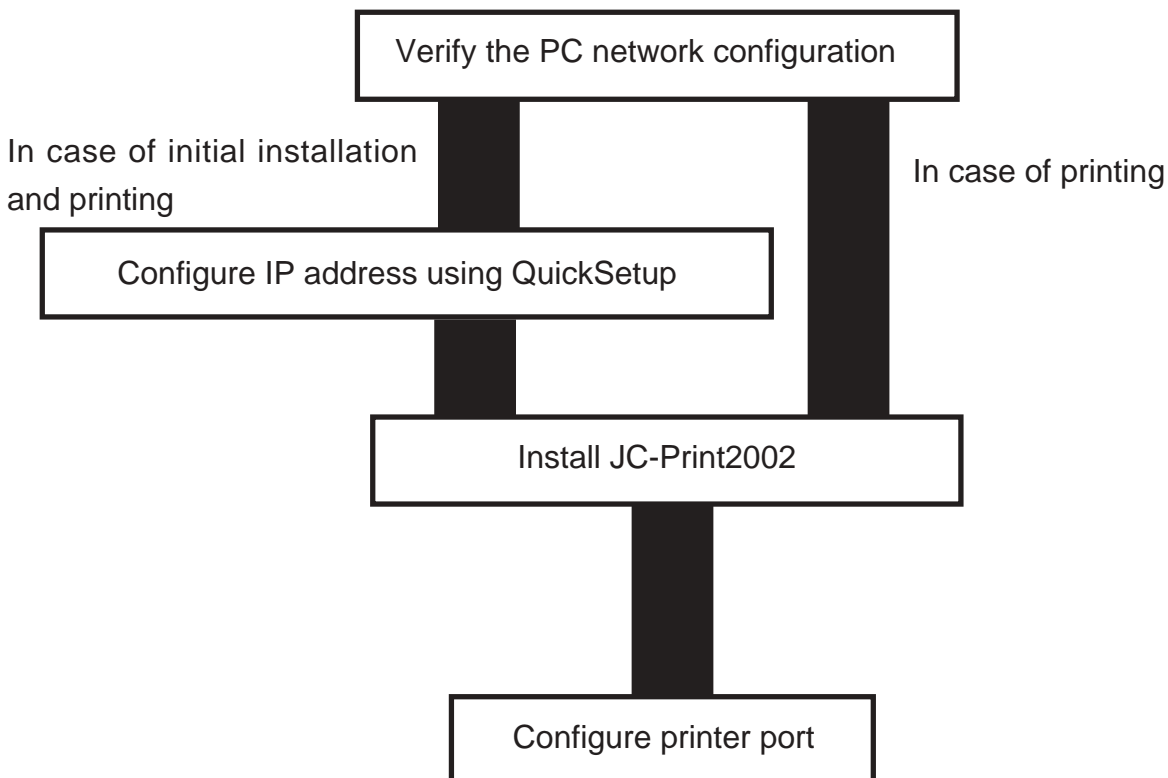
Following indicates how to print using TCP/IP protocol.



NOTE

-Make sure to install printer driver before you start using PRICOM.

-For the print using embedded printing client function, refer to "Print Using Embedded Printing Client Function" in this chapter.

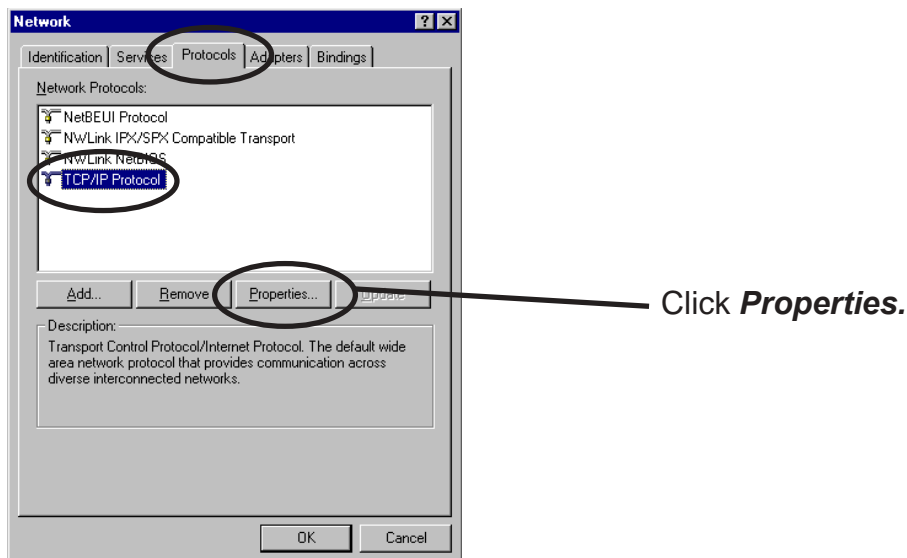


Verify the PC Network Configuration

Windows NT 4.0

Make sure that the **TCP/IP** and **Microsoft TCP/IP Printing** are added to the **Services**.

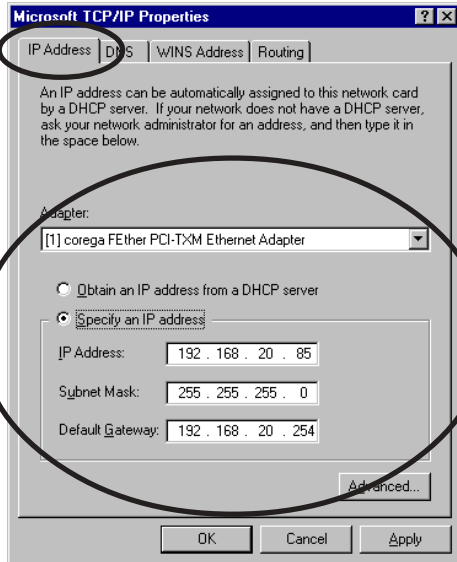
1. Click-**Start**, then **Settings**, then **Control Panel**.
2. Double-click **Network**.
3. Verify that **TCP/IP Protocol** is included in **Network Protocols**.



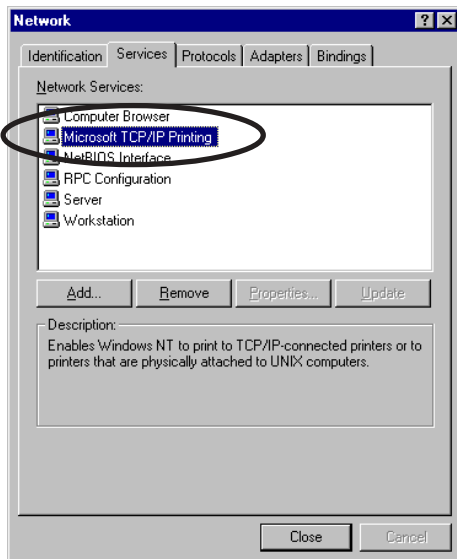
NOTE

-If **TCP/IP Protocol** is not in **Network Protocols**, click **Network Components**, then **TCP/IP Protocol** to add **TCP/IP protocol**.

4. Verify if the configuration is proper for your environment in "*IP Address*".



5. Verify if *Microsoft TCP/IP Printing* is included in *Network Services*.

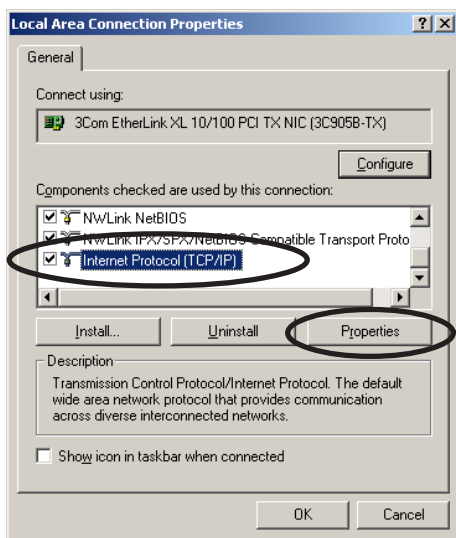


-If *TCP/IP Printing* is not in *Services*, click *Add*, then *Network Services*, then *Microsoft TCP/IP Printing* to add *Microsoft TCP/IP Printing*.

Windows 2000

Verify if **Internet Protocol [TCP/IP]** is added.

1. Click **Start**, then **Settings**, then **Control Panel**, then **Network and Dial-up Connections**.
2. Right-click **Local Area Connection**, then click **Properties**.
3. Verify that **Internet Protocol [TCP/IP]** is added.



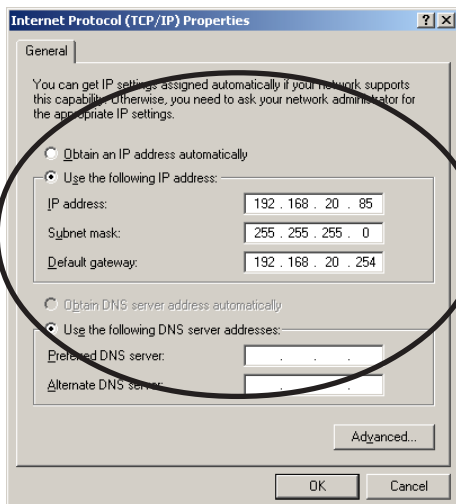
Click **Properties**.



NOTE

-If **Internet Protocol [TCP/IP]** is not in **Components checked are used by this connection**, click **Install**, then **Internet Protocol [TCP/IP]** to add **Internet Protocol [TCP/IP]**.

4. Verify if the configuration is proper for your environment in **General**.



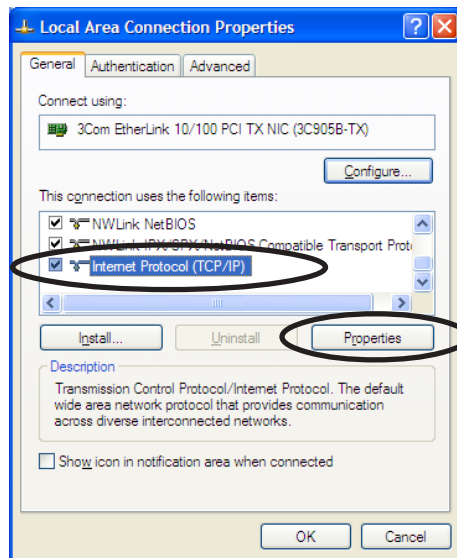
Windows XP

Verify if Internet Protocol (TCP/IP) is added.

1. Click **start**, then **Control Panel**, then **Network and Internet Connections**.

2. Right-click **Network Connections**, then click **Properties**.

3. Verify that Internet Protocol (TCP/IP) is added.



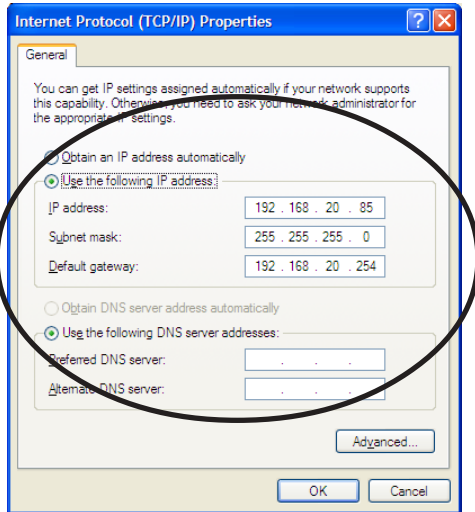
Click **Properties**.



NOTE

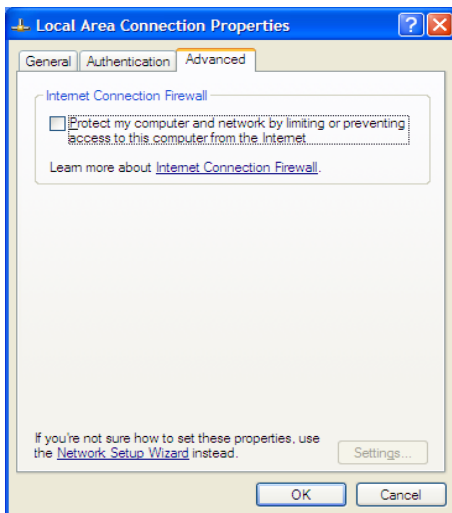
-If **Internet Protocol (TCP/IP)** is not in **This connection uses the following items**, click **Install**, then **Internet Protocol (TCP/IP)** to add **Internet Protocol (TCP/IP)**.

4. Verify if the configuration is proper for your environment in **General**.



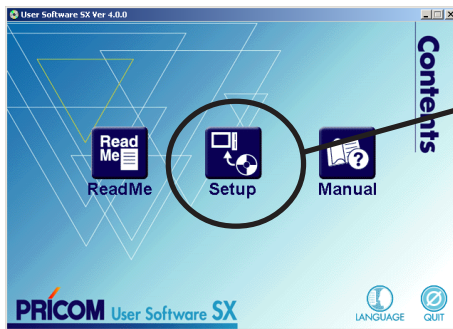
TIP

-When you use TCP/ IP protocol in Windows XP, click **Local Area Connection Properties**, then **Advanced**, then remove the check from **Protect my computer and network by limiting or preventing access to this computer from the Internet**.



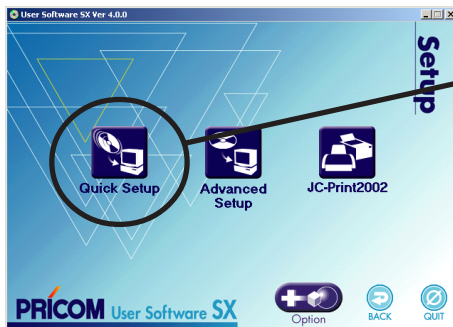
Quick Setup

1. Insert the User Software SX in the CD-ROM drive of your Windows PC. The main menu screen will be displayed.



Click **Setup**.

2. The below screen will be displayed.



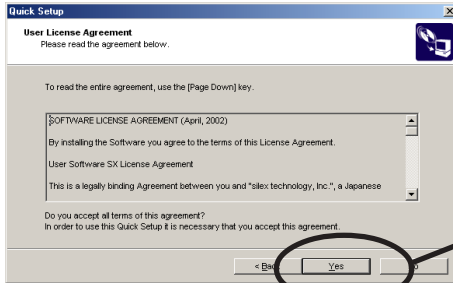
Click **Quick Setup**.

3. Quick Setup loads.



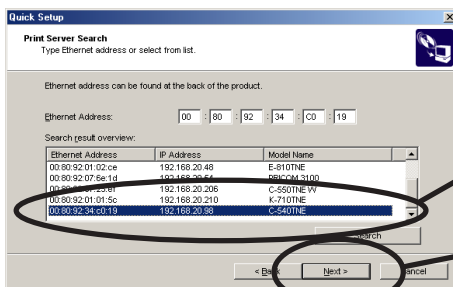
Click **Next**.

4. Confirm the Software License Agreement.



Read the agreement and click **Yes** if you accept it.

5. Select PRICOM to be configured.



Select PRICOM to be configured.

Click **Next**.

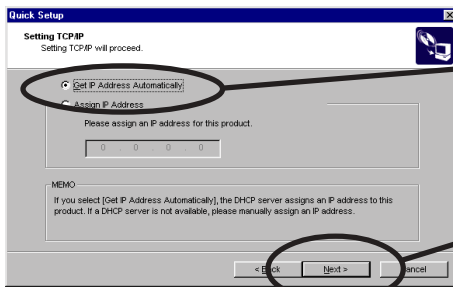


-If PRICOM does not appear in the list, click **Search**.
You can search PRICOM by typing in Ethernet address directly.

6. Assign an IP address.

When you have DHCP server in your environment.

(A) Obtain an IP address from DHCP server automatically.



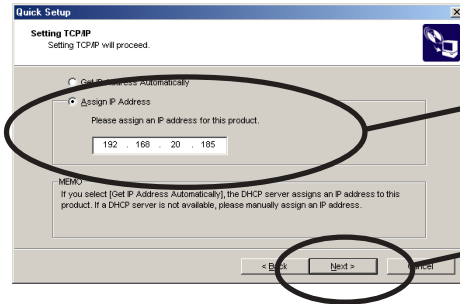
Click **Get IP Address Automatically**.

Click **Next**.



-If NetWare Client is installed and PRICOM is supporting NetWare (Enable), NetWare configuration screen will appear.

(B) Assign an IP address manually.



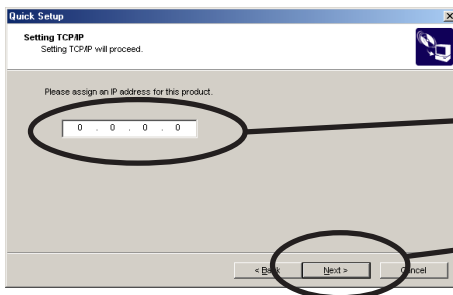
Assign an optional IP address.

Click **Next**.



-If NetWare Client is installed and PRICOM is supporting NetWare (Enable), NetWare configuration screen will appear.

When you do not have DHCP server in your environment.



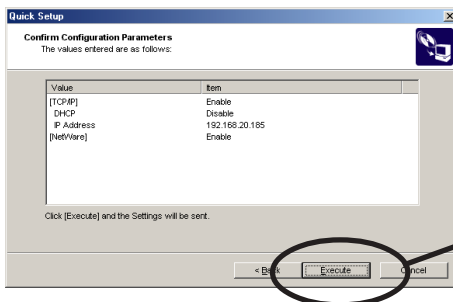
Assign an optional IP address.

Click **Next**.



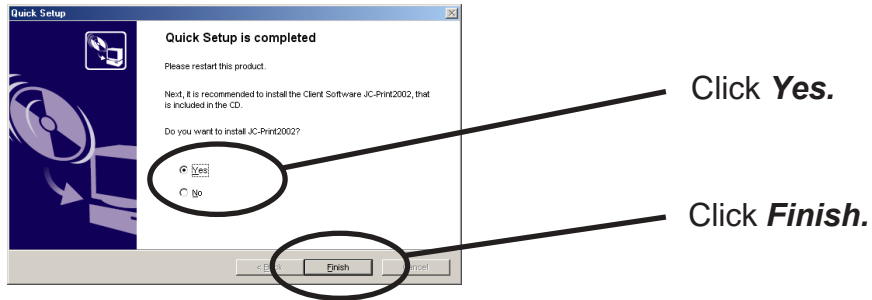
-If NetWare Client is installed and PRICOM is supporting NetWare (Enable), NetWare configuration screen will appear.

7. Verify the configuration parameters.



Click **Execute**.

8. Setup is complete.



NOTE

-Proceed to install JC-Print2002. JC-Print2002 is a printing software that enables you to print directly from Windows.

-If you want to embedded printng client function in Windows NT 4.0, Windows 2000 or Windows XP, refer to "Print Using Embedded Printing Function" in this chapter.

Install JC-Print2002

To print directly from Windows NT 4.0, Windows 2000 or Windows XP environment using TCP/IP protocol, use the JC-Print2002 bundled with PRICOM. JC-Print2002 is a printing software that enables users to use LPR (dedicated to silex products), IPP and Raw (9100) port. JC-Print2002 also records PRICOM Monitor SX. When installation is complete, the wizard to add printer port to be started.



NOTE

-LPR (Line Printer Remote)

A widely used popular protocol that enables users to execute printing to printers on the network.

-IPP (Internet Printing Protocol)

This protocol enables users to execute printing to network printers remote via Internet.

-Raw (9100) port

This function enables users to execute printing to printers on the local area network (LAN).

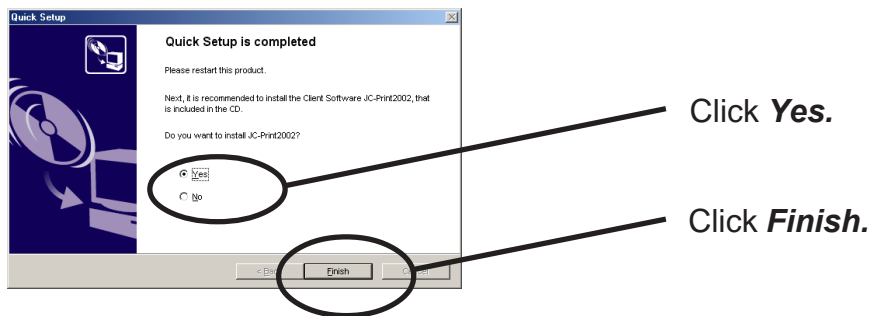
Information can be printed at a high speed without spool.

-PRICOM Monitor SX

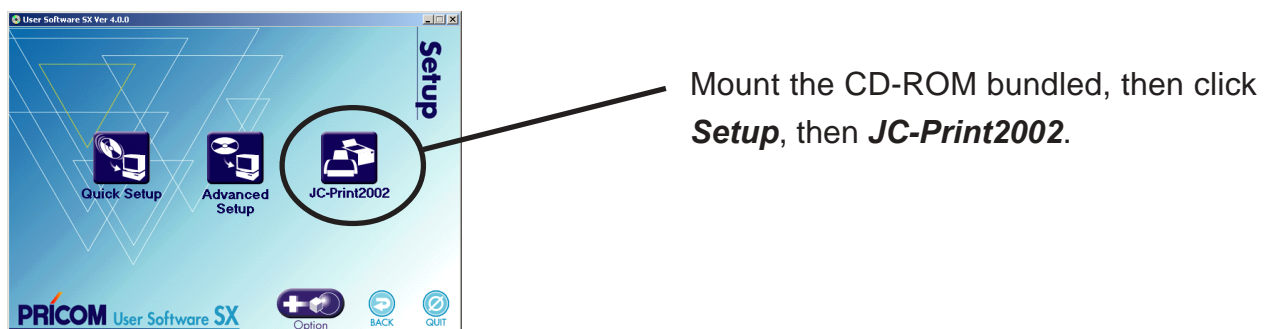
You can check the printer status with this monitor. For more details, refer to " 9. PRICOM Monitor SX".

1. Verifying installing method.

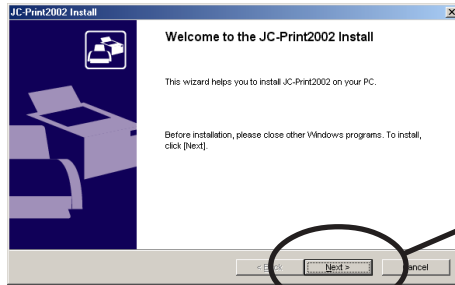
(A) Install JC-Print2002 following Quick Setup.



(B) Install JC-Print2002 .

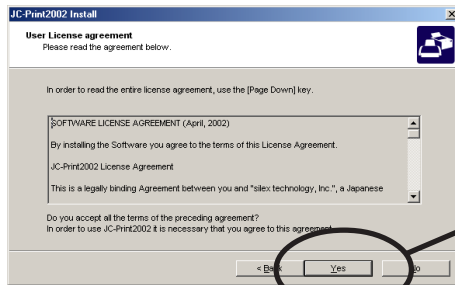


2. JC-Print2002 installation wizard to be started.



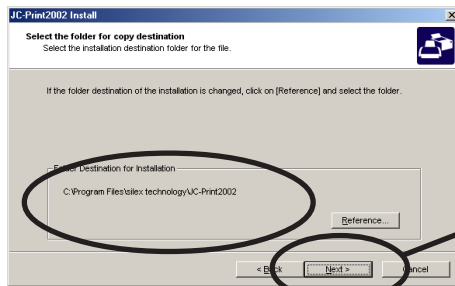
Click **Next**.

3. Confirm the Software License Agreement.



Read the agreement and click **Yes** if you accept it.

4. Verify the Destination Directory.



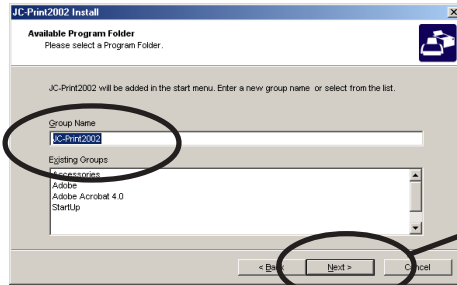
Click **Next**.



NOTE

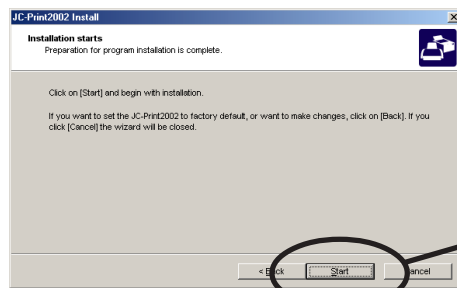
-Click **Reference** to specify the destination directory.

5. Specify the group name to be registered at the start menu.



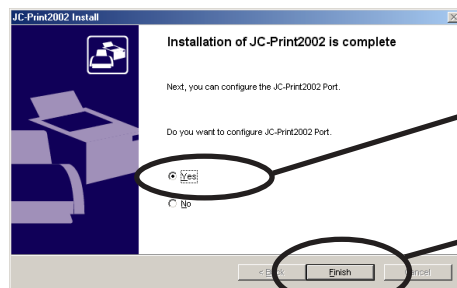
Click **Next**.

6. Installation to be started.



Click **Start**.

7. Configuration is complete.



Select **Yes**.

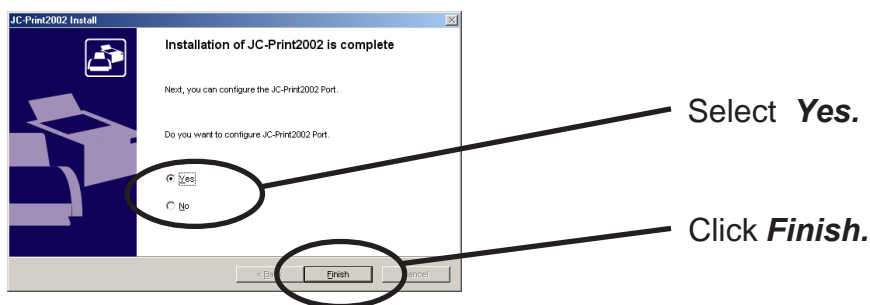
Click **Finish**.

Adding Print Port

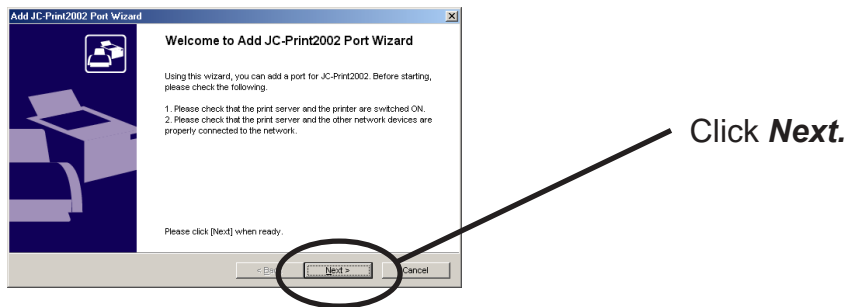
JC-Print2002 has three available options for printing. **"Print with LPR"**, **"Print with IPP"**, and **"Print with Raw Mode"**. Select the protocol to be used for printing, then click Next to start using the specified printing option.

(A)

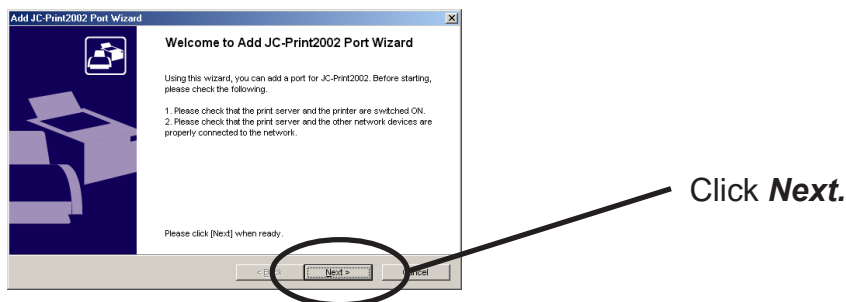
1. Adding printer port following the JC-Print2002 installation.



2. JC-Print2002 port adding wizard starts.

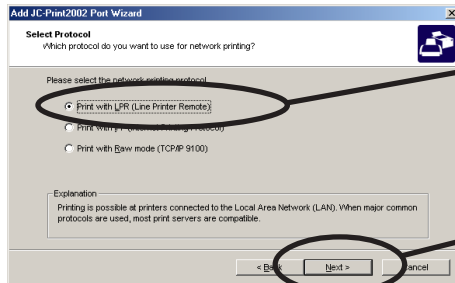


(B) Click **Start**, then **Programs**, then **JC-Print2002**, then **JC-Print2002 Port adding**.



Adding JC-Print2002 LPR Port.

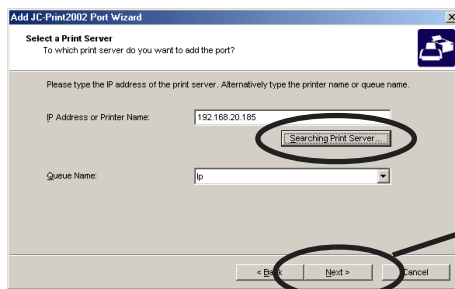
1. Select *LPR (Line Printer Remote)*.



Select *Print with LPR (Line Printer Remote)*.

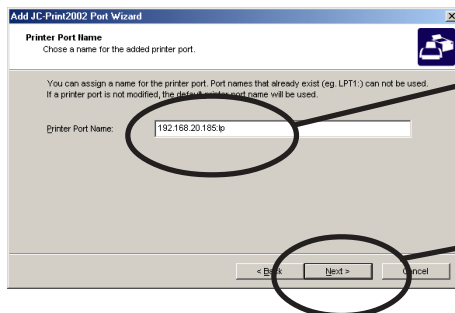
Click *Next*.

2. Display the list of print servers on the network by *Searching Print Server*. Select PRICOM you want to configure.



Click *Next*.

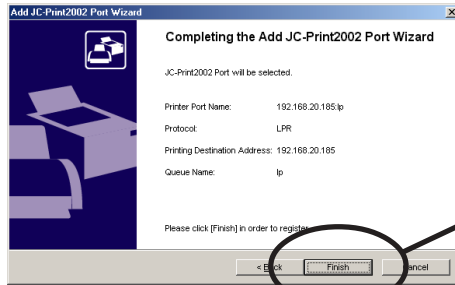
3. Type in printer port name.



If you do not want to have a specific name, use the default printer port name.

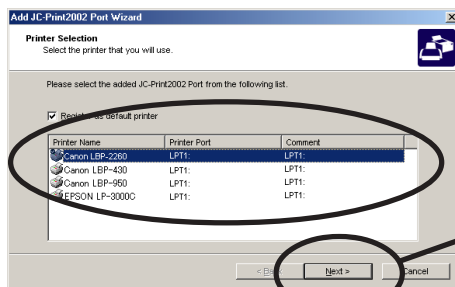
Click *Next*.

4. Verify the configuration.



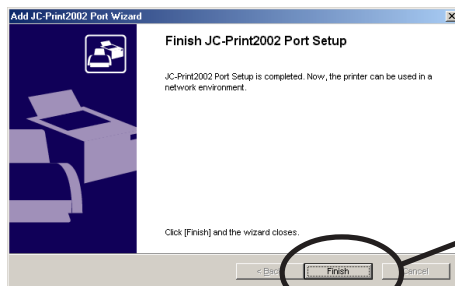
Click **Finish**.

5. Select the printer you want to use with PRICOM.



Click **Next**.

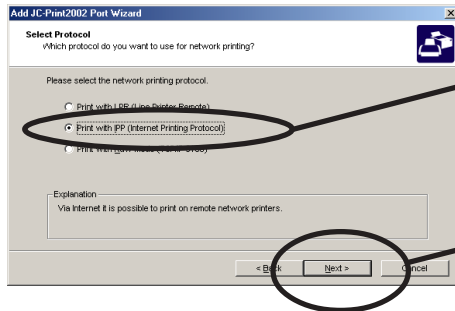
6. Port configuration is complete.



Click **Finish**.

Adding JC-Print2002 IPP Port

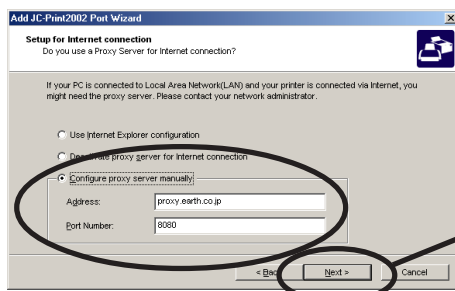
1. Select IPP (Internet Printing Protocol).



Select **Print with IPP (Internet Printing Protocol)**.

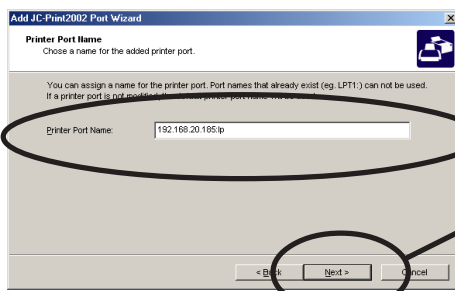
Click **Next**.

2. Select either **Deactivate proxy server for Internet connection** or **Configure proxy server manually**.



Click **Next**.

3. Type in URL assigned to PRICOM for **Printer URL**. PRICOM IPP printer URL is "/ipp" or "/ipp/lp".



Click **Next**.

Ex.): When URL is "abc.co.jp",
http://abc.co.jp/ipp/lp

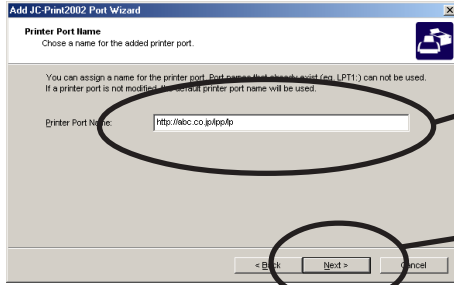
Ex.): When IP address is
"192.168.20.185",
http://192.168.20.185/ipp/lp



NOTE

-If you click **Next**, you can make sure if the specified URL exists.

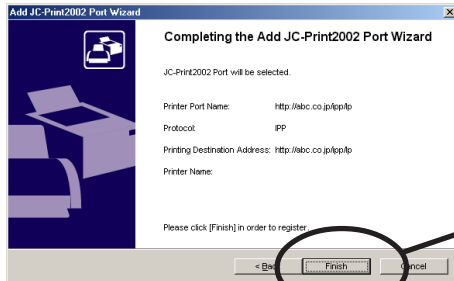
4. Configure the port name for printing.



If you do not want to have a specific port name, use the default printer port name.

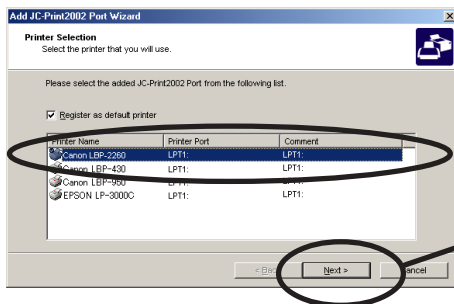
Click **Next**.

5. Verify the configuration.



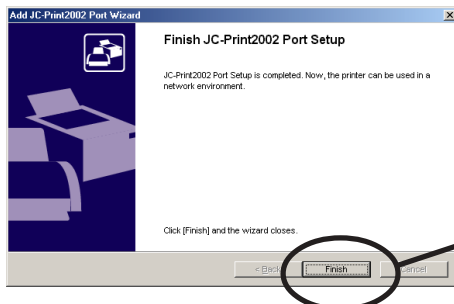
Click **Finish**.

6. Select the printer you want to use with PRICOM.



Click **Next**.

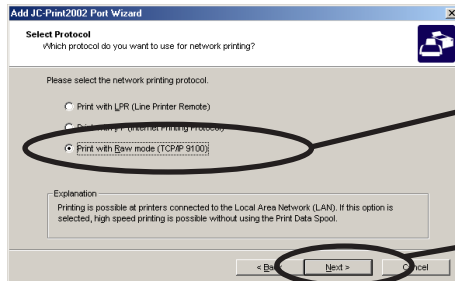
7. Configuration is complete.



Click **Finish**.

Adding JC-Print2002 Raw (9100) Port

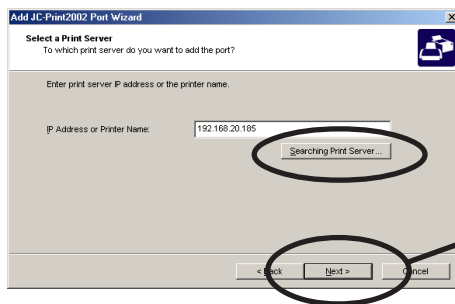
1. Select Raw mode.



Select **Print with Raw mode (TCP/IP 9100)**.

Click **Next**.

2. Display the list of print servers on the network by **Searching Print Server**. Select PRICOM you want to configure.



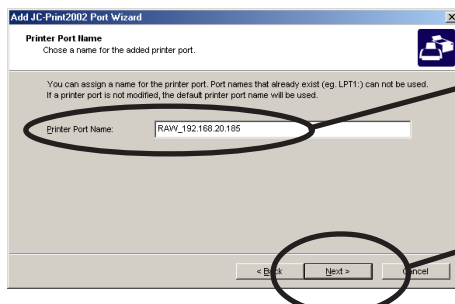
Click **Next**.



NOTE

-To verify if the specified print server can access 9100 port, click **Reference**.

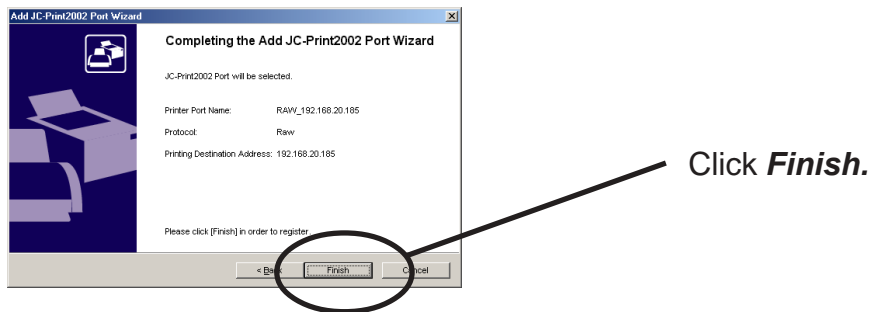
3. Type in printer port name.



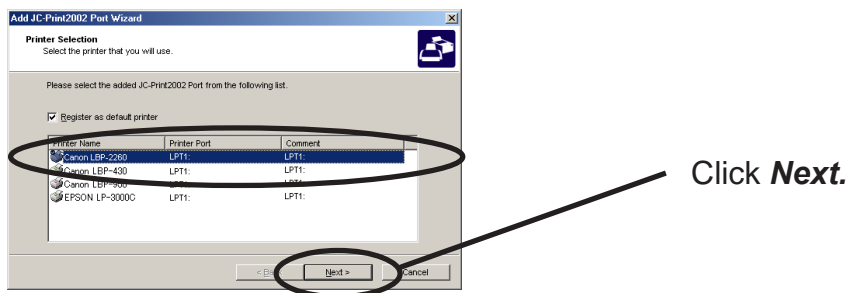
If there is no problem, use the default printer port name (RAW_IP address).

Click **Next**.

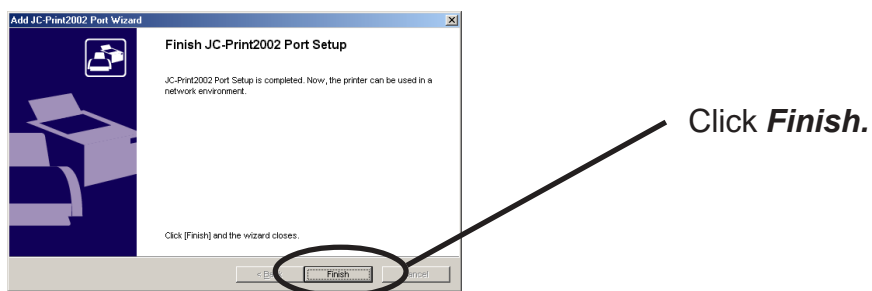
4. Verify the configuration.



5. Select the printer you want to use with PRICOM.

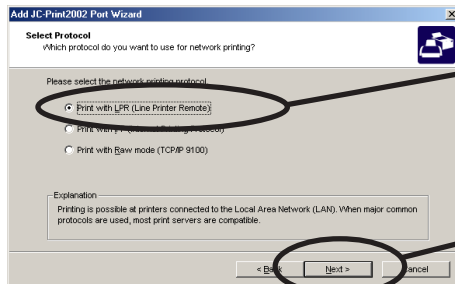


6. Configuration is complete.



Adding USB Port

1. Select *LPR (Line Printer Remote)*.



Select *Print with LPR (Line Printer Remote)*.

Click *Next*.

2. Click the *Searching Print Server* button to show a list of print servers in the network, then select this product.

Select "lp_u1" as the queue name.



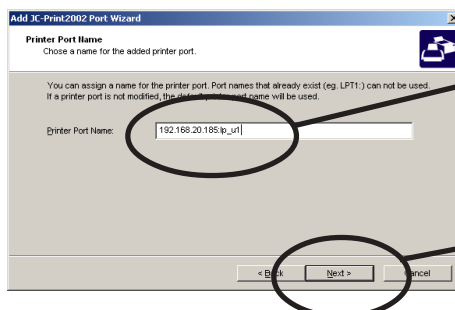
Click *Next*.



TIP

-When you do not use the USB port, select "lp."

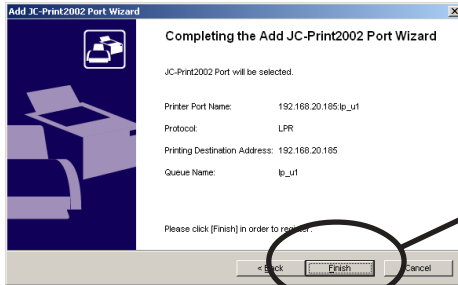
3. Type in printer port name.



If you do not want to have a specific name, use the default printer port name.

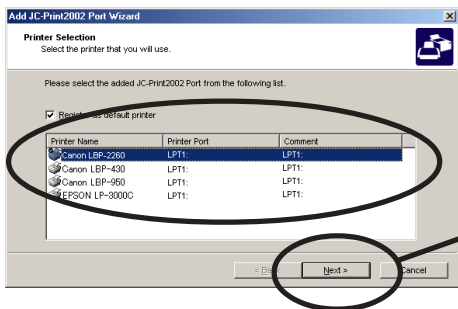
Click *Next*.

4. Verify the configuration.



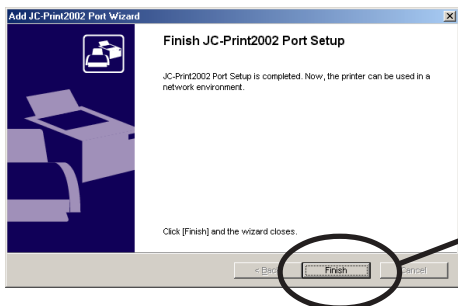
Click **Finish**.

5. Select the printer you want to use with PRICOM.



Click **Next**.

6. Port configuration is complete.



Click **Finish**.

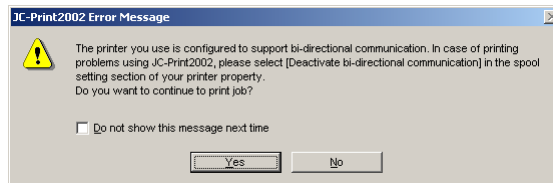
Configuring Printer Driver

This section explains how to configure printer driver.

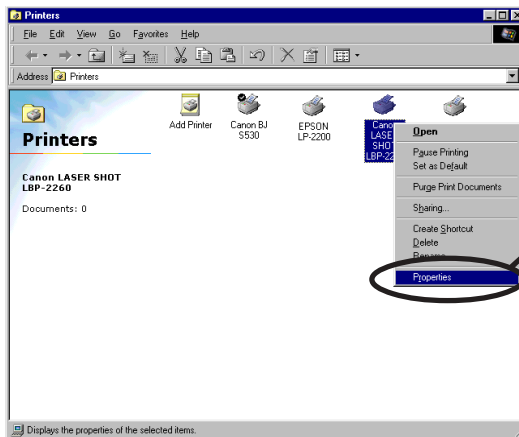
Ex.) Windows 2000



-If you do not configure printer driver, the following error dialog may appear. In this case, click **No** and configure printer driver by following steps.

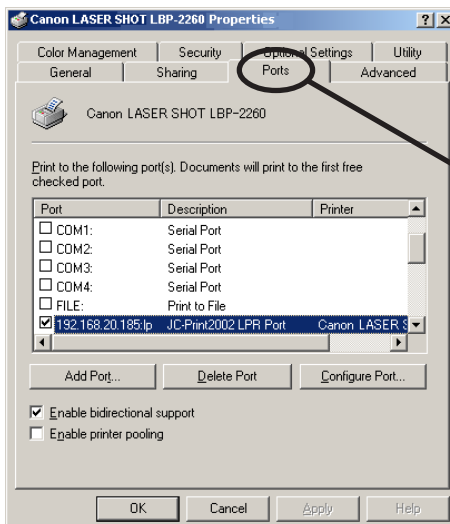


1. Click **Start**, then **Settings**, then **Printer**, then open the printer property.



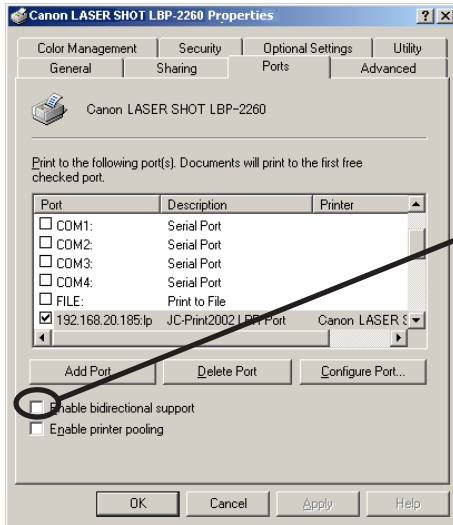
Select **Properties**.

2. Select **Ports**.



Select **Ports**.

3. Configure bidirectional.

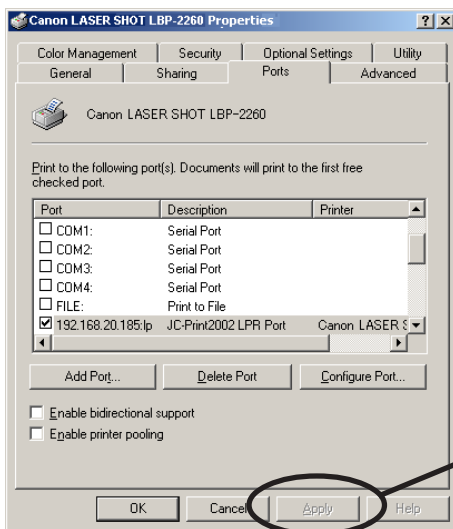


Check off **Enable bidirectional support**.



-If you use Canon Laser Shot Utility [Print Buddy II] and [NetSpot JobMonitor], check in **Enable bidirectional support**.

4. Configuration is complete.



Click **Apply**.

Print Using NetBEUI, NetBIOS over TCP/IP of Windows NT 4.0 and Windows 2000

Print Using NetBEUI, NetBIOS over TCP/IP of Windows NT 4.0

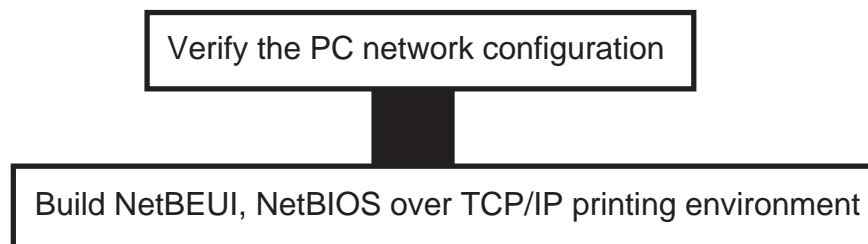
Follow the steps shown below to print from Windows NT 4.0, Windows 2000 and Windows XP environment using NetBEUI, NetBIOS over TCP/IP protocol.



-Only PRICOM 3100 supports printing using NetBIOS over TCP/IP.



- Make sure to install printer driver before you start using PRICOM.
- For further information on NetBEUI, NetBIOS over TCP/IP configuration, refer to Chapter 8.



Verify the Network Configuration (NetBEUI)

Make sure that **Workstation**, **NetBIOS interface** and **NetBEUI protocol** are added to **Network** of Windows NT 4.0.

1. Click **Start**, then **Settings**, then **Control Panel**.
2. Double-click **Network**.
3. Verify that **Workstation** and **NetBIOS interface** are added to the **Services**.



-If **Workstation** is not in the **Network Service** list, click **Add**, then select **Workstation** to add Workstation.

4. Verify **NetBEUI** is added to **Protocol**.



-If **NetBEUI** is not in the list, click **Add**, then select **NetBEUI** from **Network protocol**.

Verify the PC Network Configuration (NetBIOS over TCP/IP)

Make sure that **Workstation**, **TCP/IP** and **NetBIOS interface** are added to **Network** of Windows NT 4.0.

1. Click **Start**, then **Settings**, then **Control Panel**.

2. Double-click **Network** icon.

3. Verify that **Workstation** and **NetBIOS interface** are added to the **Services**.



NOTE

-If **Workstation** is not in the **Network Service** list, click **Add**, then select **Workstation** to add Workstation.

4. Verify **TCP/IP** is added to **Protocol**.

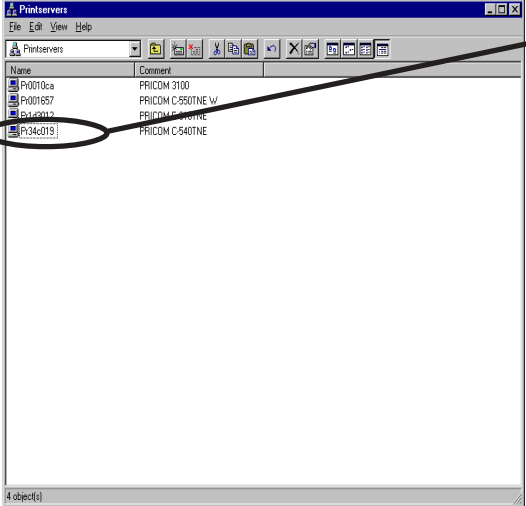


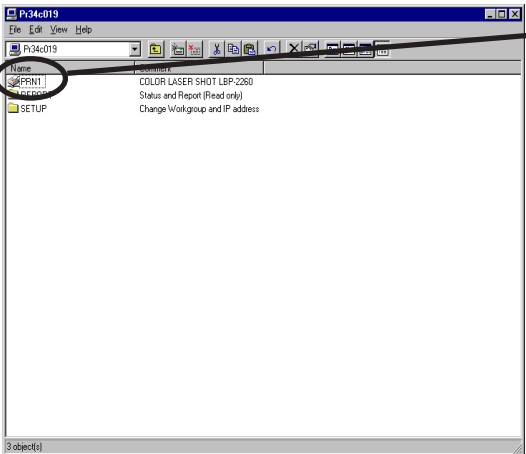
NOTE

-If **TCP/IP** is not in the list, click **Add**, then select **TCP/IP** from **Network protocol**.

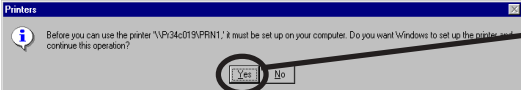
Print Using NetBEUI, NetBIOS over TCP/IP(When you use the EIO port)

1. Double-click **Network computer**, then open group name; [**PrintServers**] in the Whole Network.

2.  Double-click the computer (PRICOM).

3.  Double-click the printer.

4. Confirmation message for printer configuration will be displayed.

 Click **Yes**.

5. Printer add wizard to be started. Follow the instruction given by the wizard to complete configuration. If you get the printer test page, adding printer is complete.

Print Using NetBEUI, NetBIOS over TCP/IP(When you use the USB port)

1. Double-click **Network computer**, then open group name; [**PrintServers**] in the Whole Network.

2.  Double-click the computer (PRICOM).

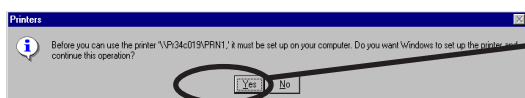
3.  Double-click the printer icon with “usb1”



NOTE

-When you do not use the USB, double-click the icon for which symbol “prn1” is marked.

4. Confirmation message for printer configuration will be displayed.



Click **Yes**.

5. Printer add wizard to be started. Follow the instruction given by the wizard to complete configuration. If you get the printer test page, adding printer is complete.

Print Using NetBEUI, NetBIOS over TCP/IP of Windows 2000

Follow the steps shown below to print from Windows 2000 using NetBEUI, NetBIOS over TCP/IP protocol.



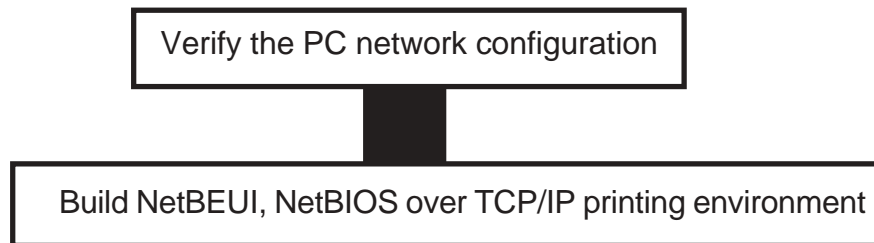
TIP

-Only PRICOM 3100 supports printing using NetBIOS over TCP/IP.



NOTE

- Make sure to install printer driver before you start using PRICOM.
- For further information on NetBEUI, NetBIOS over TCP/IP configuration, refer to Chapter 8.



Verify Network Configuration

Make sure that **NetBEUI protocol** and **Microsoft network shared service** are added to the **Network** of the Windows 2000.

1. Click **Start**, then **Settings**, then **Control Panel**, then **Network and Internet Connection**.
2. Open **Properties** of **Local area connection**.
3. Verify NetBEUI protocol is added.



NOTE

-If **NetBEUI** is not in the component list, click **Install**, then **Protocol**, then **NetBEUI protocol**.

4. Verify that **Microsoft Network Client** is added.



NOTE

-If **Microsoft Network Client** is not in component list, click **Install**, then **Client**, then **Microsoft Network Client**.

Verify the PC Network Configuration (NetBIOS over TCP/IP)

Make sure that **Internet Protocol (TCP/IP)** and **Microsoft Network Sharing Service** are added to **Network** of Windows NT 4.0 and verify if **NetBIOS** is configured to **Internet Protocol (TCP/IP)**.

1. Click **Start**, then **Settings**, then **Control Panel**, then **Network and Dial-up Connection**.
2. Right-click **Local Area Connection**, then click **properties**.
3. Verify Microsoft Network Sharing Services is added.



NOTE

-If **Microsoft Network Sharing Services** is not in the list, click **Install**, then **Client**, then **Microsoft Network Sharing Services**.

4. Verify **Internet Protocol (TCP/IP)** is added.



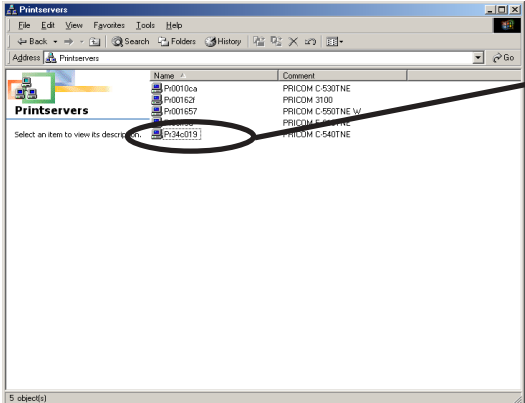
NOTE

-If **Internet Protocol (TCP/IP)** is not in **Components checked are used by this connection**, click **Install**, then **Internet Protocol (TCP/IP)** to add **Internet Protocol (TCP/IP)**.

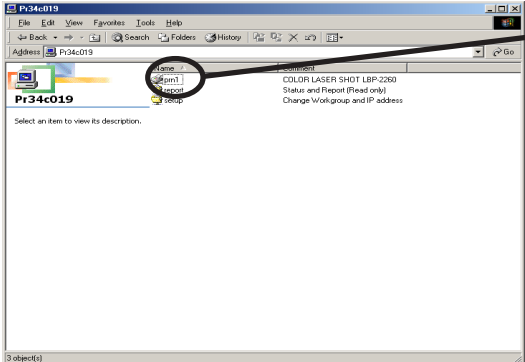
5. Verify **Enable NetBIOS over TCP/IP** is selected by clicking **Internet Protocol (TCP/IP)**, then **Properties**, then **Details**, then **WINS**.

Print Using NetBEUI, NetBIOS over TCP/IP(When you use the EIO port.)

1. Double-click **My network**, then **Network**, then **Microsoft Windows Network** and open work group name, **PrintServers**.

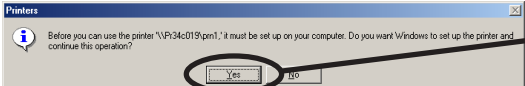
2. 

Double-click the computer (PRICOM).

3. 

Double-click your computer.

4. Confirmation message for printer configuration will be displayed.

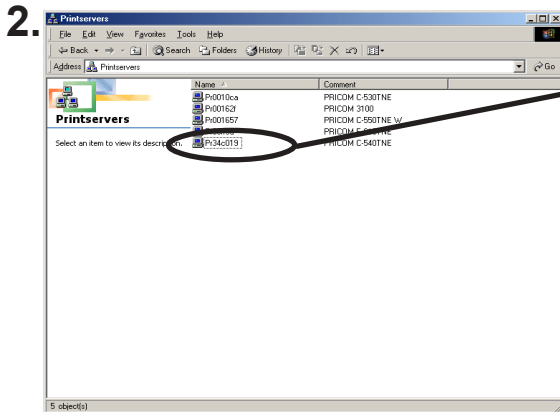


Click **Yes**.

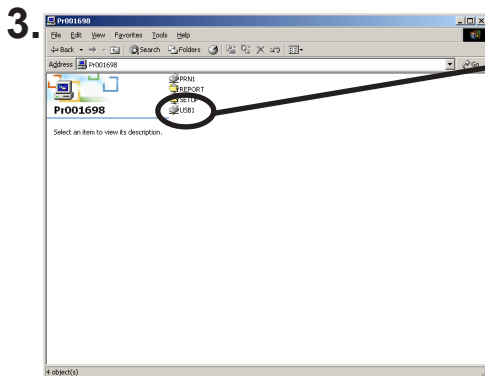
5. Printer add wizard to be started. Follow the instruction given by the wizard to complete configuration. If you get the printer test page, adding printer is complete.

Print Using NetBEUI, NetBIOS over TCP/IP(When you use the USB port.)

1. Double-click **My network**, then **Network**, then **Microsoft Windows Network** and open work group name, **PrintServers**.



Double-click the computer (PRICOM).



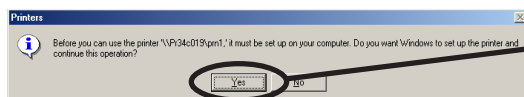
Double-click the printer icon with "usb1"



NOTE

-When you do not use the USB, double-click the icon for which symbol "prn1" is marked.

4. Confirmation message for printer configuration will be displayed.



Click **Yes**.

5. Printer add wizard to be started. Follow the instruction given by the wizard to complete configuration. If you get the printer test page, adding printer is complete.

Print Using NetBIOS over TCP/IP of Windows XP

Print Using NetBIOS over TCP/IP of Windows XP

Follow the steps shown below to print from Windows XP using NetBIOS over TCP/IP protocol.



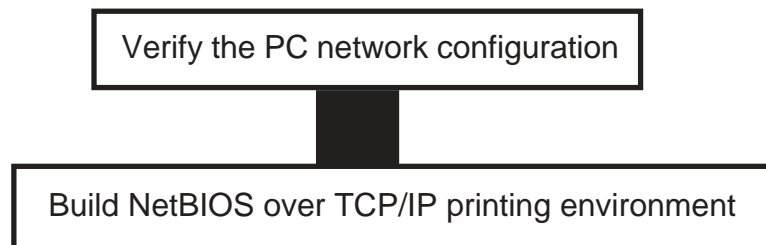
TIP

-Only PRICOM 3100 is object of this section. Other products are not applied to this section.



NOTE

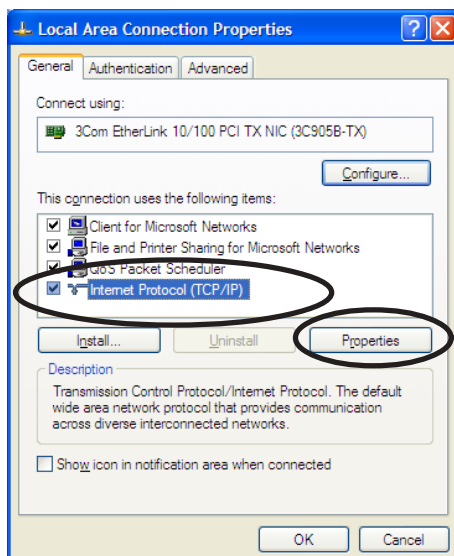
- Make sure to install printer driver before you start using PRICOM.
- For further information on NetBIOS over TCP/IP configuration, refer to Chapter 8.



Verify the PC Network Configuration

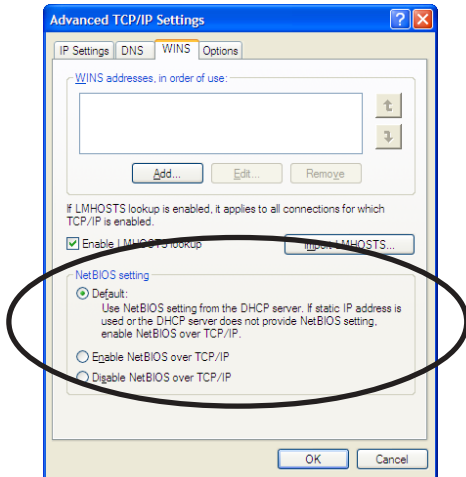
Make sure that **NetBIOS** is configured in **Internet protocol (TCP/IP)** and **Microsoft Network Client** is added to **Network**.

1. Click **start**, then **Settings**, then **Control Panel**, then **Network and Internet Connection**, then **Network Connection**.
2. Open **Properties** of **Local area connection**.

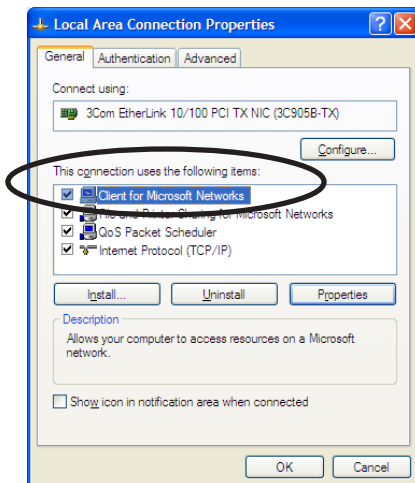


Click **Properties**.

3. Click **Internet protocol (TCP/IP)**, then **Property**, then **Details**, then **WINS** and verify **Default** or **Enable NetBIOS over TCP/IP** is selected for NetBIOS configuration.

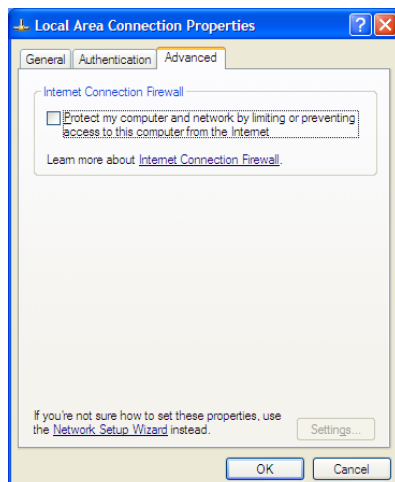


4. Verify that **Microsoft Network Client** is added.



TIP

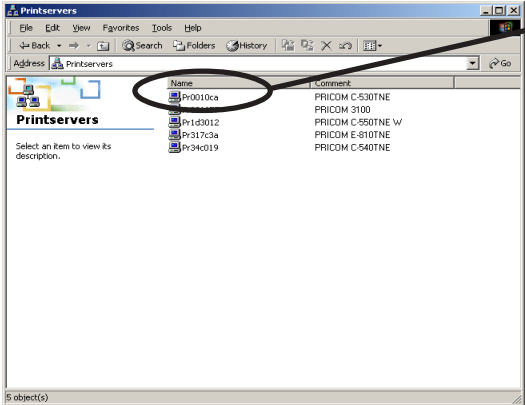
-When you use TCP/ IP protocol in Windows XP, click **Local Area Connection Properties**, then **Advanced**, then remove the check from **Protect my computer and network by limiting or preventing access to this computer from the Internet**.



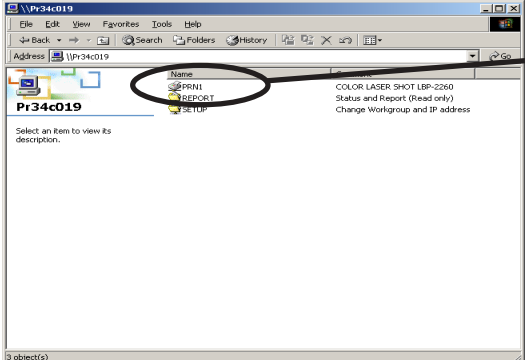
Print Using NetBIOS over TCP/IP(When you use the EIO port.)

1. Double-click **My network**, then **View workgroup computers**, then **Microsoft Windows Network** and open work group name, **PrintServers**.

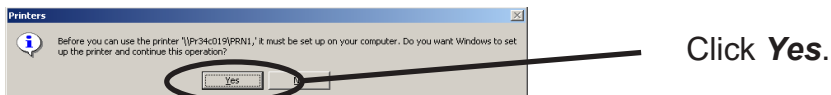
2.  Double-click the computer (PRICOM).



3.  Double-click the printer.



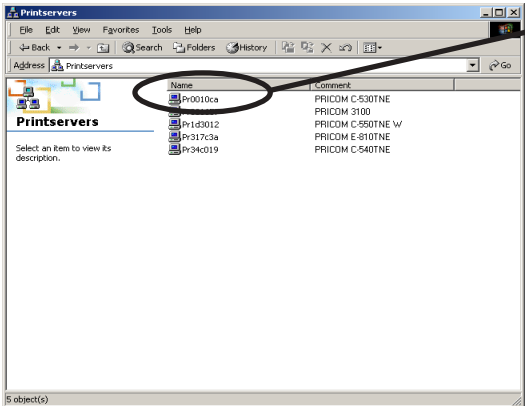
4. Confirmation message for printer configuration will be displayed.



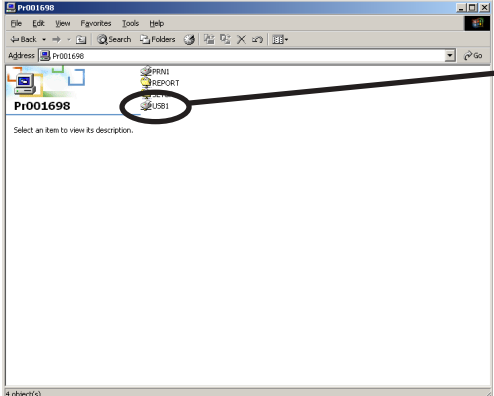
5. Follow the setting instructions given by the printer add wizard until the printer test page is output that means the end of printer adding sequence.

Print Using NetBIOS over TCP/IP(When you use the USB port.)

1. Double-click **My network**, then **View workgroup computers**, then **Microsoft Windows Network** and open work group name, **PrintServers**.

2.  Double-click the computer (PRICOM).


Name	Comment
Pr0010ca	PRICOM C-530TNE
Pr0010cb	PRICOM 3100
Pr143012	PRICOM C-550TNE W
Pr317c3a	PRICOM E-510TNE
Pr34c019	PRICOM C-540TNE

3.  Double-click the printer icon with "usb1"



-When you do not use the USB, double-click the icon for which symbol "prn1" is marked.

4. Confirmation message for printer configuration will be displayed.

 Click **Yes**.

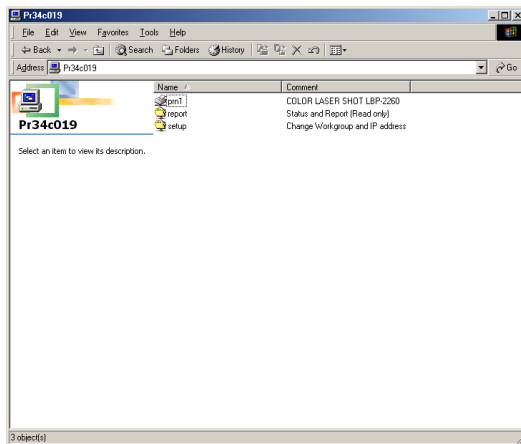
5. Follow the setting instructions given by the printer add wizard until the printer test page is output that means the end of printer adding sequence.

About NetBEUI, NetBIOS over TCP/IP

Structure of NetBEUI, NetBIOS over TCP/IP work group

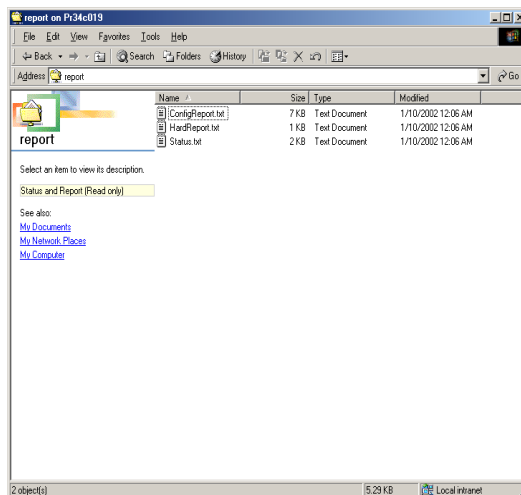
This section explains about structure of NetBEUI, NetBIOS over TCP/IP work group installed in PRICOM.

Ex.): PRICOM Ethernet address: 00:80:92:34:c0:19



\\Pr34c019: Computer (PRICOM)

\\Pr34c019\prn1: Printer



\\Pr34c019\report\ConfigReport.txt:

Settings report (read only)

\\Pr34c019\report>Status.txt:

Diagnostic report (read only)

System status report (read only)

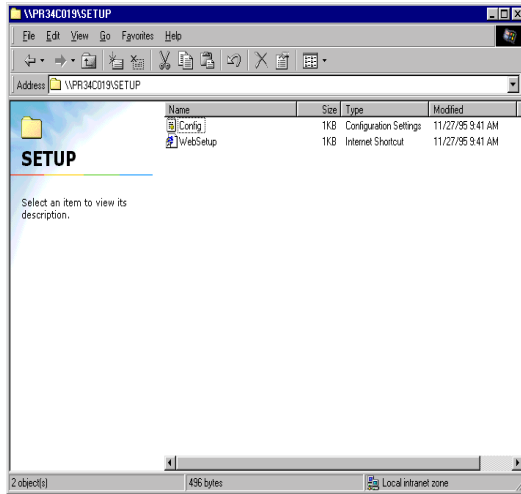
\\Pr34c019\report\HardReport.txt:

System status report (read only)



TIP

-Only PRICOM 3100 displays [HardReport. txt] in [report] folder.



\\Pr34c019\setup\Config.ini:
Initial setting file (can be edited)
\\Pr34c019\setup\WebSetup:
Shortcut file (read only)

- Configuration report

Outputs the internal information in PRICOM when activated.

- System status report

Outputs the information on PRICOM status when activated.

- Initial configuration file

With the initialization file, **Work group name** and **IP address** can be described. Use editor like memo pad to edit and save files in the overwrite mode. In a few seconds, PRICOM automatically resets and reboots.

By editing the initialization file and saving the file in the overwrite mode, you can change work group name and IP address.

Ex.)

Workgroup=UserGroup

IP address=192.168.20.126

Specify work group name that already exist in the whole network. In case IP address is to be automatically assigned by using DHCP/BOOTP and RARP server, the IP address typed in [IP address] will be invalid.

- Shortcut file

Once PRICOM is given IP address, shortcut (WebSetup) is created. When double-clicking the shortcut icon, web browser to be activated and PRICOM Web page to be displayed.



NOTE

-For the Web browser, refer to Chapter 8.

Print Using Embedded Printing Client Function

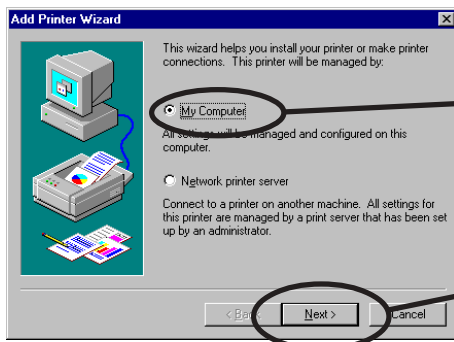
This section explains how to print using embedded printing client function.

Print Using LPR Port of Windows NT 4.0



-In order to print using LPR port, LPR port must be added. Click **Start**, then **Settings**, then **Control Panel**, then **Network**, then select **Services**, then click **Add**, then select **Microsoft TCP/IP Printing**, then **OK**. Component is installed. Restart the computer.

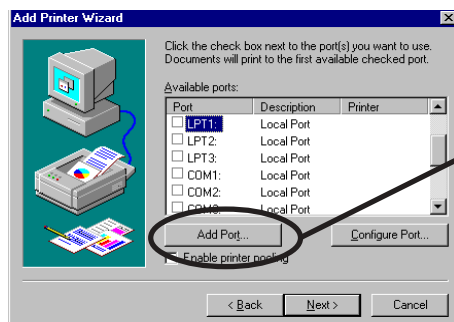
1. Click **Start**, then **Settings**, then **Printers**, then double-click **Add Printer**.



Select **My Computer**.

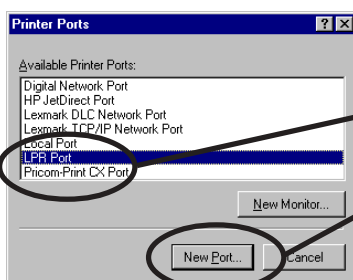
Click **Next**.

2. Add Printer



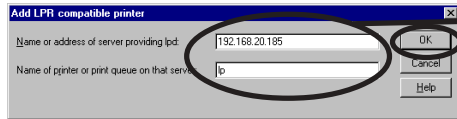
Click **Add Port**.

3. Select the printer port.



Select **LPR Port** and click **New Port**.

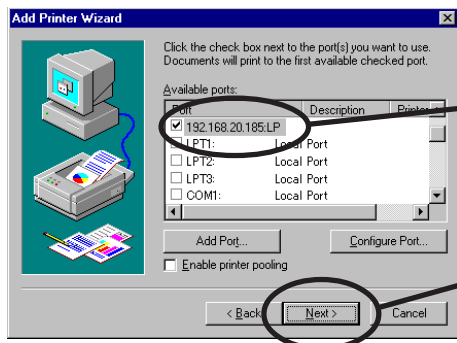
4. Add LPR compatible printer.



Type in the IP address configured to PRICOM and type in lp.

Click **OK**.

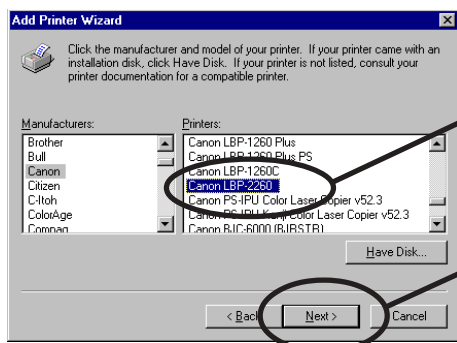
5. Verify the Printer Port.



Verify if the appropriate port is checked.

Click **Next**.

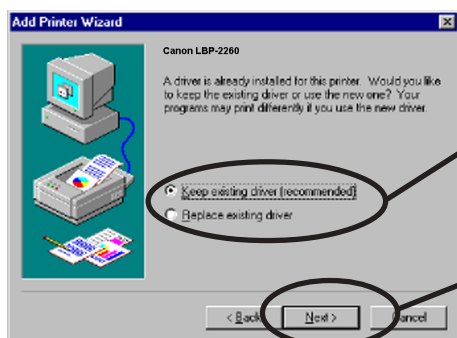
6. Select the printer driver.



Select the printer driver to be used.

Click **Next**.

7. Verify the printer driver.



Select **Keep existing driver (recommended)** or **Replace existing driver**.

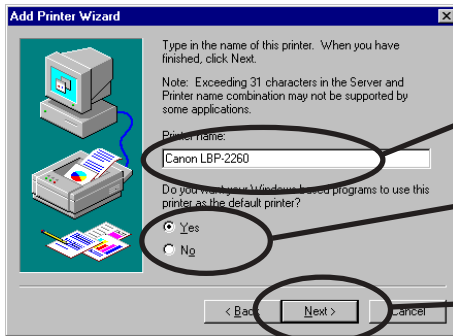
Click **Next**.



NOTE

-If installed the latest driver, select **Replace existing driver**.

8. Register the Printer name.

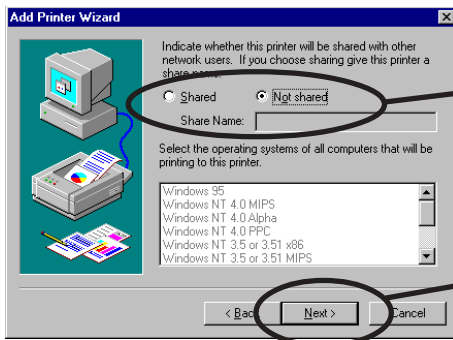


Select if use the printer as the default printer or not.

If you do not specify the printer name, use the printer name already set.

Click **Next**.

9. Select if the printer to be shared or not .



Select **Shared** or **Not shared**.

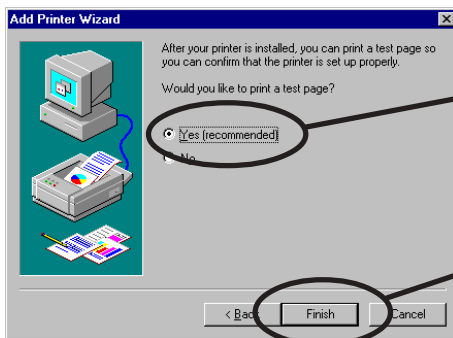
Click **Next**.



-If the printer is shared with other computers in the same network, select **Shared**.

NOTE

10. Select if you want test print.



Select **Yes**.

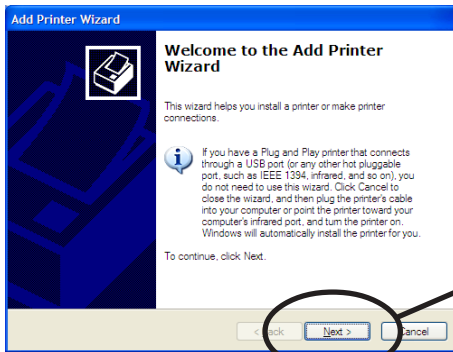
Click **Finish**.

11. If the test page is printed properly, configuration is complete.

Print Using Standard TCP/IP Port of Windows 2000 and Windows XP

Screens displayed below are for Windows XP. If you use Windows 2000, the screen may vary.

1. Click **start**, then **Settings**, then **Control Panel**, then **Printers and Other Hardware**, then **Add a printer..**



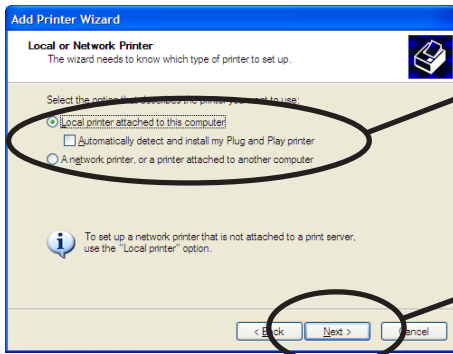
Click **Next**.



NOTE

-If you use Windows 2000, click **Start**, then **Settings**, then **Control Panel**, then **Printers**, then **Add Printer**.

2. Select the printer to be configured.



Select **Local printer attached to this computer** and remove the check from **Automatically detect and install...**

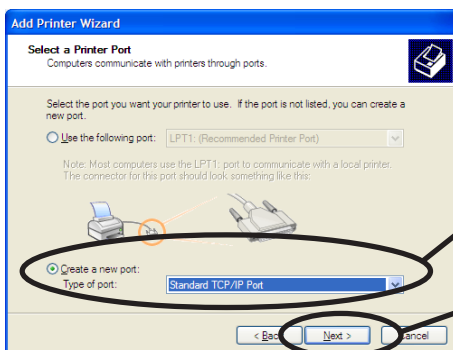
Click **Next**.



NOTE

-If you use Windows 2000, select **Local Printer** and remove the check from **Automatically detect and...**

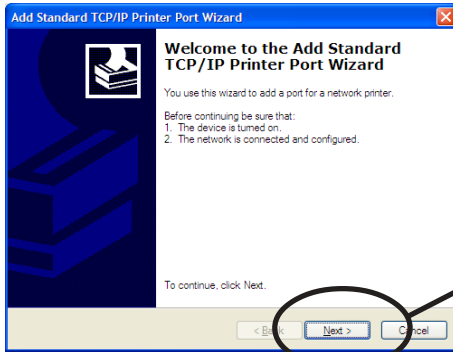
3. Select the printer port.



Check **Create a new port** and select **Standard TCP/IP Port**.

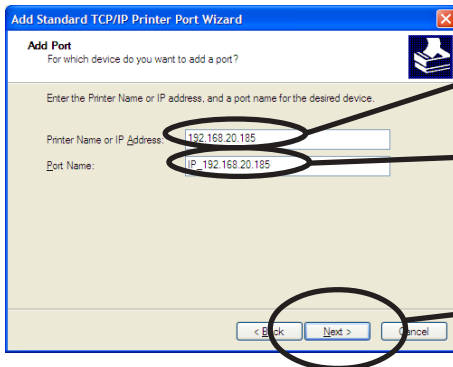
Click **Next**.

4. Add Standard TCP/IP Printer Port Wizard will be started.



Click **Next**.

5. Add TCP/IP Printer Port .

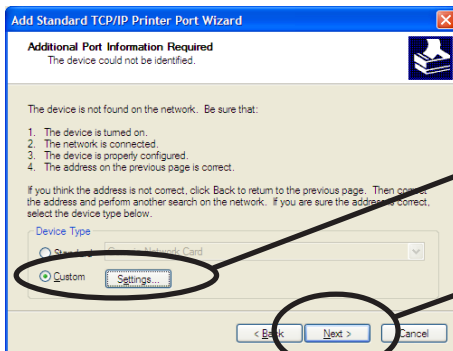


Type in the IP address configured to PRICOM.

If you do not specify the **Port Name**, use the established code (IP_XXX.XXX.XXX).

Click **Next**.

6. Identify the device type.

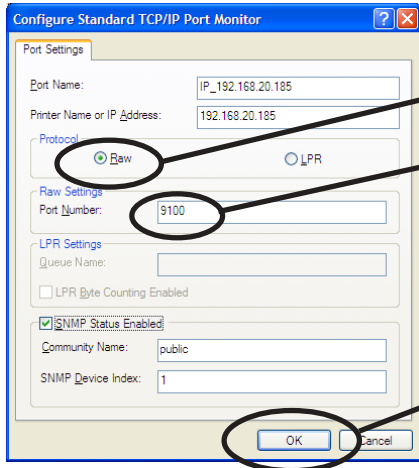


Check **Custom** and click **Settings**.

Click **Next**.

7. Type in the port information.

(A) Raw Mode



Select **Raw**.

Type in **9100**.

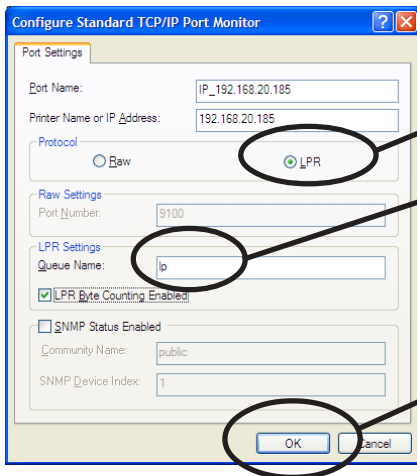
Click **Next**.



NOTE

-If you click **OK**, the screen 6 will be displayed, then click **Next**.

(B) LPR Mode



Select **LPR**.

Type in **lp** and check **LPR Byte Counting Enabled**.

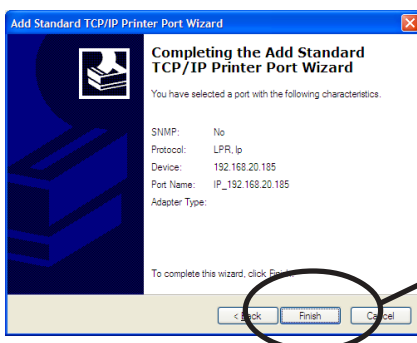
Click **OK**.



NOTE

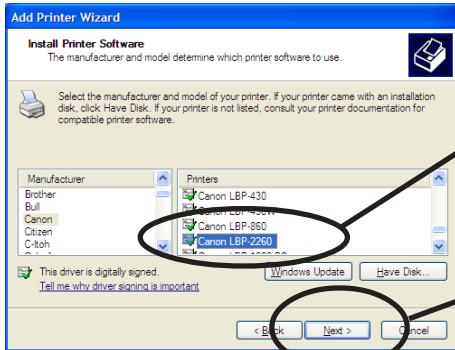
-If click **OK**, the screen 6. will be displayed, then click **Next**.

8. Verify the configuration.



Click **Finish**.

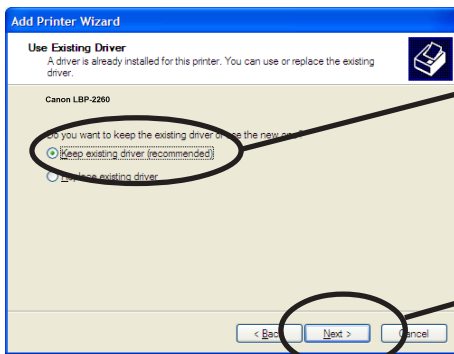
9. Select the printer driver.



Select the printer driver to be used.

Click **Next**.

10. Verify the printer driver.



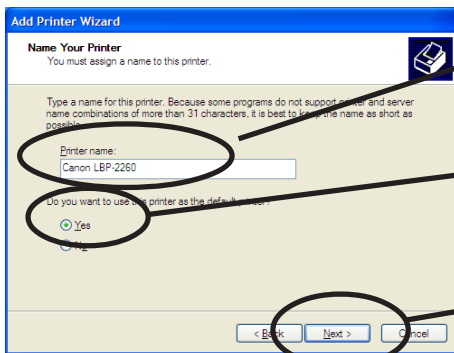
Select **Keep existing printer driver (recommended)** or **Replace existing driver**.

Click **Next**.



-If installed the latest driver, select **Replace existing driver**.

11. Register the Printer name.

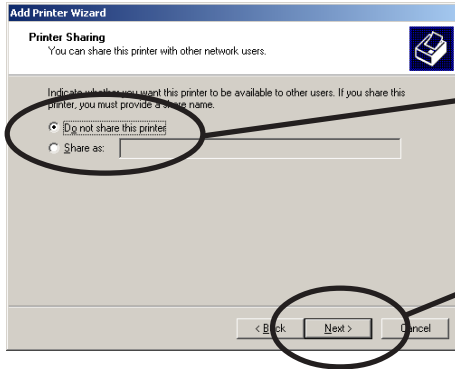


If you do not specify the printer name, use the printer name already set.

Select if use the printer as the default printer or not.

Click **Next**.

12. Select if the printer to be shared or not.



Select **Do not share this printer** or **Shared as**.

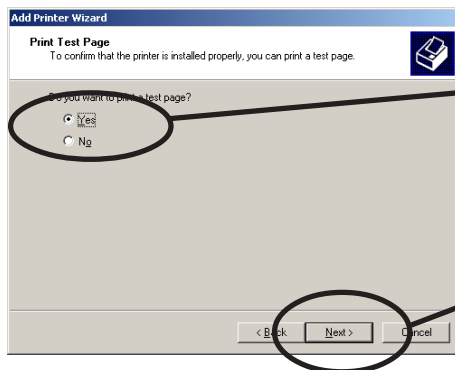
Click **Next**.



NOTE

-If the printer is shared with other computers in the same network, select **Shared**.

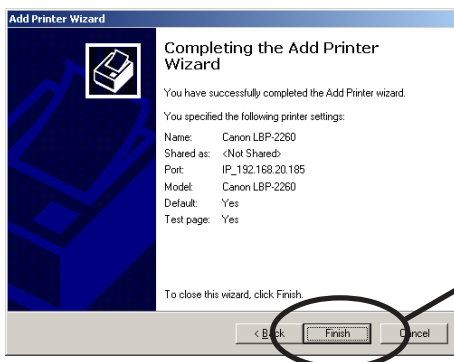
13. Select if you want test print.



Select **Yes**.

Click **Next**.

14. Verify the configuration.



Click **Finish**.

15. If the test page is printed properly, configuration is complete.

Print Using LPR Port of Windows 2000 and Windows XP

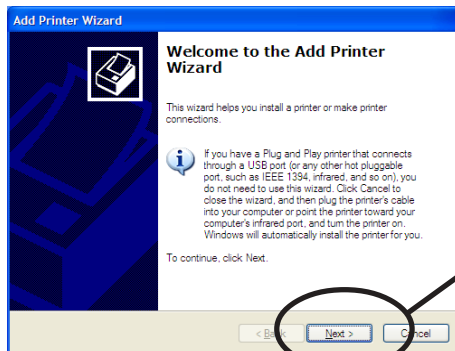


TIP

-In order to print using LPR port, LPR port must be added. Click **Start**, then **Control Panel**, then **Add or Remove Programs** (For Windows 2000, click **start**, then **Settings**, then **Control Panel**, then **Add or Remove Programs**), then **Add/Remove Windows Components**. **Windows Components Wizard** will be displayed, then click **Components**, then **Other Network File and Printing Services**, then **Details**, then **Print Services for Unix**, then **OK**. **Windows Components Wizard** will be displayed. Click **Finish**.

-Screens displayed below are for Windows XP. If you use Windows 2000, the screens may vary.

1. Click **start**, then **Control Panel**, then **Printers and Other Hardware**, then **Add a printer**.



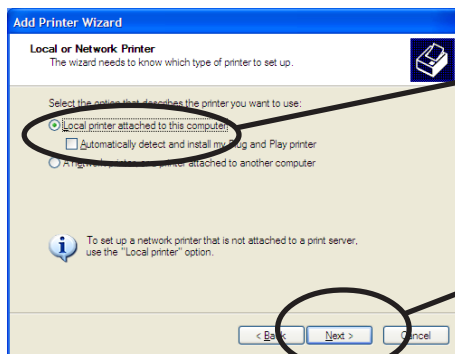
Click **Next**.



NOTE

-If you use Windows 2000, click **Start**, then **Settings**, then **Printers**, then double-click **Add Printer**.

2. Select the printer to be configured.



Select **Local printer attached to this computer** and remove the check from **Automatically detect and ...**

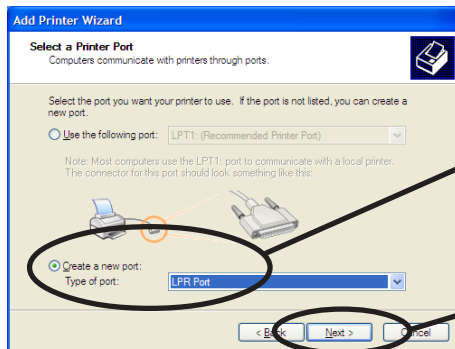
Click **Next**.



NOTE

-If you use Windows 2000, select **Local printer** and remove the check from **Automatically detect and ...**

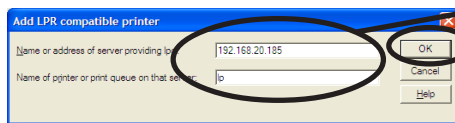
3. Select the printer port.



Check **Create a new port** and select **Standard TCP/IP Port**.

Click **Next**.

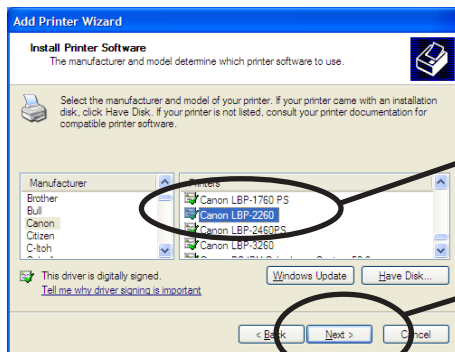
4. Add LPR compatible printer.



Type in the IP address configured to PRICOM and type in lp.

Click **OK**.

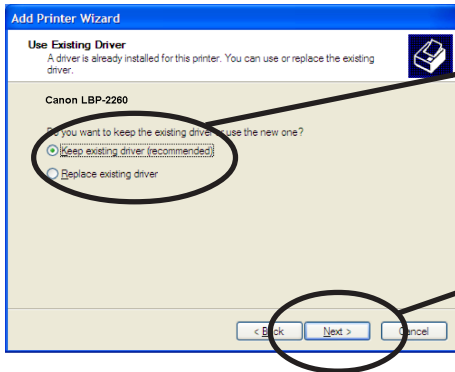
5. Select the printer driver.



Select the printer driver to be used.

Click **Next**.

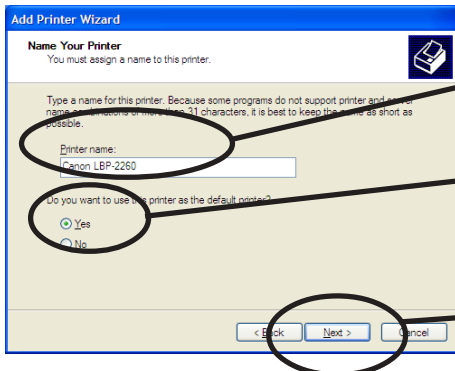
6. Verify the printer driver.



Select **Keep existing driver (recommended)** or **Replace existing driver**.

Click **Next**.

7. Register the printer name.

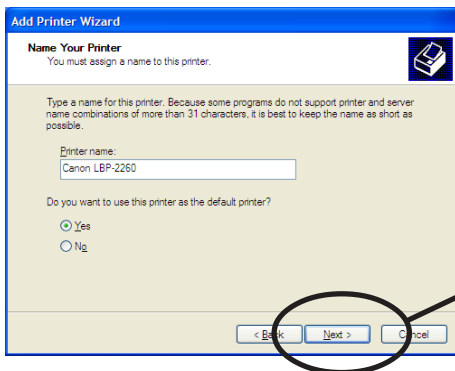


If you do not specify the printer name, use the printer name already set.

Select if use the printer as the default printer or not.

Click **Next**.

8. Select if the printer to be shared or not .

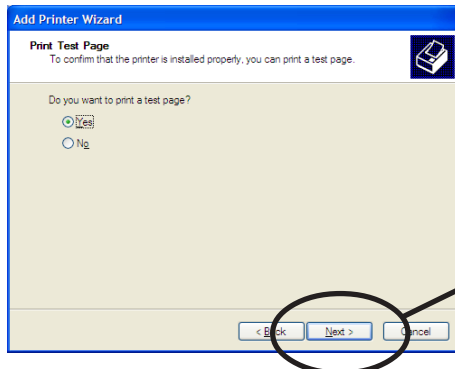


Click **Next**.



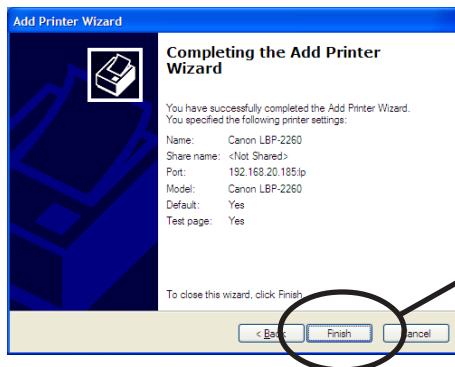
-If the printer is shared with other computers in the same network, select **Shared as**.

9. Select if you want test print.



Click **Next**.

10. Verify the configuration.



Click **Finish**.

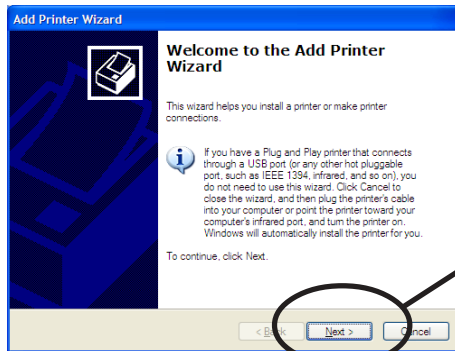
11. If the test page is printed properly, configuration is complete.

Print Using IPP Port of Windows 2000 and Windows XP



-Screens displayed below are for Windows 2000. If you use Windows 2000, the screens may vary.

1. Click **start**, then **Control Panel**, then **Printers and Other Hardware**, then **Add a printer**.

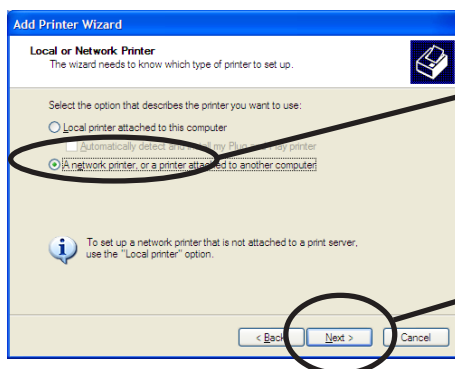


Click **Next**.



-If you use Windows 2000, click **Start**, then **Settings**, then **Printers**, then double-click **Add Printer**.

2. Select the printer to be configured.



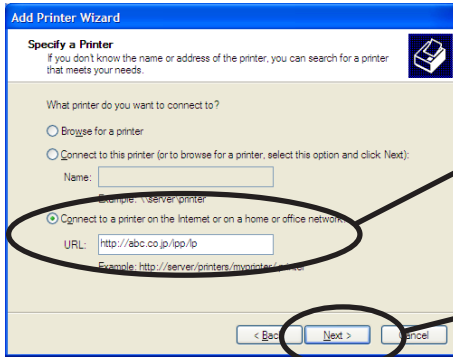
Select **A network printer or a printer attached to another computer**.

Click **Next**.



-If you use Windows 2000, select **Network Printer**.

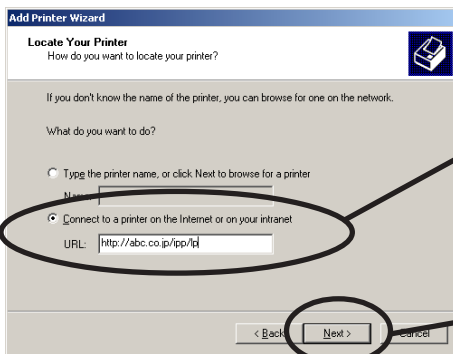
3. Type in PRICOM IP address.



Select **Connect to a printer on the Internet or on the home/office network**. Specify URL or PRICOM IP address.

Click **Next**.

<Windows 2000>



Select **Connect to a printer on the Internet or intranet**. Specify URL or IP address of PRICOM.

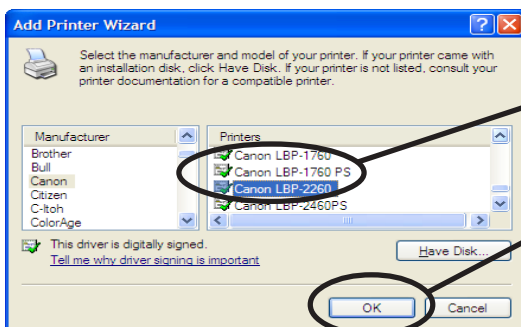
Click **Next**.



Ex.): When URL is "abc.co.jp",
http://abc.co.jp/ipp/lp or http://abc.co.jp/ipp

Ex.): When IP address is "192.168.20.185",
http://192.168.20.185/ipp/lp or http://192.168.20.185/ipp

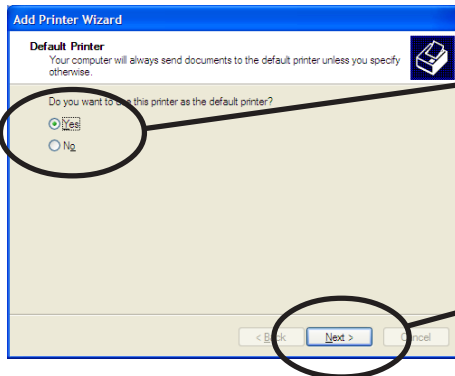
4. Select the printer driver.



Select the printer driver to be used.

Click **Next**.

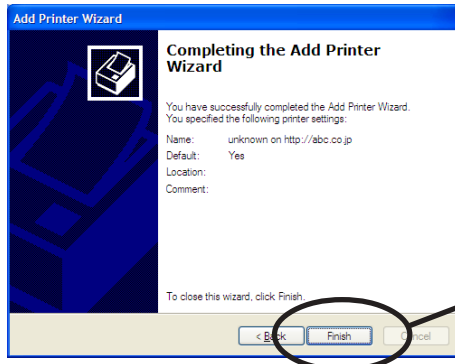
5. Configure the default printer.



Select if you want to use this printer as a default printer.

Click **Next**.

6. Configuration is complete.



Click **Finish**.