

Appendix

Hardware Specification

Operating Environment

- Temperature: +10C to +55C
- Humidity : 20-80% RH (no dewing)

Storage Environment

- Temperature: -10C to +50C
- Humidity : 20-85% RH (no dewing)

EMI

- VCCI Class B
- FCC Class B
- EN55022 Class B
- EN55024

CPU

- 32bit RISC CPU

Memory

- RAM :8MByte
- FlashROM :2MByte

Network Interface

- 10BASE-T/100BASE-TX (auto-detection): 1 port

Printer Interface

- EIO interface port
- USB interface port

(The references to USB capability are applicable only for the H-260U product)

Others

- DIP switch : 4 switches
- LED : 3 LEDs, one for status (Orange), one for 10BaseLINK (Green), one for 100BaseLINK (Green).

Software Specification

Supported Protocols

<PRICOM H-260/H-260U>

*TCP/IP

Raw(9100) Port, LPD, FTP, IPP, HTTP, TELNET, DHCP, BOOTP, SNMP
WINS, TCP, UDP, ARP, RARP, IP, ICMP, NetBIOS over TCP/IP,
TPP(ThinPrint Protocol)

*NetBEUI

SMB, NetBIOS

*NetWare

IPX, SPX, SNMP, NDS(NetWare 4.x/5/6)
Remote printer mode (up to 8 servers)
Print server mode (up to 8 servers, 32 queue)
Frame automatic detection from IEEE 802.2, IEEE 802.3, Ethernet-II or
SNAP frame type

AppleTalk

PAP, ATP, ZIP, RTMP, NBP, AEP, DDP, AARP, ELAP, AppleTalk phase2

IPv6 Function(Preliminary Release)

This document describes the usage and limitation of the IPv6 function of PRICOM H-260/H-260U.



TIP

-The IPv6 function is provided for technical preview purpose only.
Our customer support would not handle questions about IPv6.

What is IPv6?

IPv6 is the next generation of TCP/IP. Although TCP/IP protocol is widely used with the Internet, the current IPv4 version has limitation of its relatively small address space of 32bit. IPv6 provides incredibly large address space of 128bit, and it also has many improved features than IPv4.



TIP

-In order to use IPv6 functionality of PRICOM H-260/H-260U, the other component of the network (Router, Client PC, etc) has to be already IPv6 enabled.

Outline for IPv6 function

Product release

PRICOM H-260/H-260U supports following functionality over IPv6;

- * Configuration over TELNET and HTTP.
- * Printing over FTP and LPR.
- * Connection check with ping6.
- * Route tracing with traceroute6.

IPv6 address

The link-local address of PRICOM H-260/H-260U will be as follows;

FE80:0:0:0:0:0280:92FF:FExx:yyzz

(xyyyzz is the lower 3-digit of the Ethernet address in hexadecimal format)



NOTE

-The IPv6 address could be automatically configured if there is an IPv6-enabled router with stateless-auto configuration server capability on the network.



TIP

Limitation

-PRICOM H-260/H-260U supports link-local and stateless-auto configuration for IPv6 address configuration.

Thus, the manual-configuration and statefull-auto configuration (DHCPv6) are not supported.

-IPsec features (Both AH(Authentication Header) and ESP(Encapsulating Security Payload)) are not supported.

-The traffic-class and flow-label in the IPv6 header is fixed to 0.

-Jumbo-Payload is not supported.

-PRICOM H-260/H-260U supports send/receive fragmentation. However the maximum payload size in a single packet is limited up to 3072, including the header length.

-SNMP IPv6 MIB is not supported.

-The utilities shipped with PRICOM H-260/H-260U are not IPv6 enabled.

-When printing with IPv6, the IP address in the banner page is printed as 0.0.0.0.

How to use

Enabling the IPv6 functionality of PRICOM H-260/H-260U

The IPv6 functionality is disabled as factory default.

In order to enable it, follow the instruction below;

(1) Assign IPv4 address in usual way

(Refer to the setup guide for more details)

(2) Access to the configuration of PRICOM H-260/H-260U with TELNET.



TIP

-You can not configure IPv6 functionality with the utilities shipped with PRICOM H-260/H-260U. Please use Web browser or TELNET to do that.

(3) Set IPv6 item as Enabled in the TCP/IP Configuration menu.

(4) Save the configuration, then restart PRICOM H-260/H-260U.

The IPv6 functionality will be enabled after PRICOM H-260/H-260U is restarted.

Enabling the IPv6 functionality of the PC

Following instructions are how to enable IPv6 functionality of the Microsoft Windows XP. Please refer to the manual for other operating systems.

(1) Enabling IPv6 functionality

Run the "ipv6.exe" from the command prompt. In order to open the command prompt window, run the "cmd" command from "Run..." menu in the start menu.

(Example)

```
C:/> ipv6 install
```



NOTE

-Please refer to the Microsoft Website to know more about "ipv6.exe"

(2) Register the IPv6 address and the hostname into the hosts file

When you specify the target address, you can use the hostname rather than the IPv6 address if you registered them into the hosts file.

On the Windows XP, the host file is stored at;

Folder: C:/windows/system32/drivers/etc

(Assuming the system drive is C:)

File : hosts

Add the address/hostname information with using notepad or other text editing software.



NOTE

(Example of Hosts file)

```
# Copyright (c) 1993-1999 Microsoft Corp.
#
# This is a sample HOSTS file used by Microsoft TCP/IP for Windows.
#
# Additionally, comments (such as these) may be inserted on individual
# lines or following the machine name denoted by a '#' symbol.
#
# For example:
#
# 102.54.94.97 rhino.acme.com # source server
# 38.25.63.10 x.acme.com # x client host

127.0.0.1 localhost
fe80::280:92ff:fe12:3456 pricom h-260U
IP address hostname
```



-If you use IPv6 function on Windows XP by adding link-local address to the hosts file, you need to specify the default interface by IPv6 rtu command. If you have multi-interface, you can not use this function.

* For further operational information on "ipv6.exe", please refer to the Microsoft Corporation website.

(3) How to use PRICOM H-260/H-260U on the Windows XP

Once the Windows XP becomes IPv6 enabled and the hostname/address was configured in hosts file, you can do...

- Configuration / status display with Internet Explorer 6.0
- Printing from "Print services for Unix" port.
- File-printing with LPR or FTP from the command prompt.
- Connection check with ping6.



-The "standard TCP/IP port" printing and "IPP" printing of current versions of Windows XP are not IPv6 enabled.

In order to printing over IPv6, you have to install "Print services for Unix" component from the control panel.

Please refer to the Section.4 "Printing LPR port on the Windows XP" of the users manual of PRICOM H-260/H-260U.

-When use with Internet Explorer 6.0 or Unix print services, you have to specify the address as hostname rather than IPv6 address.

(fe80::280:92feff:xx:yyzz)

ThinPrint Product .print Client Support

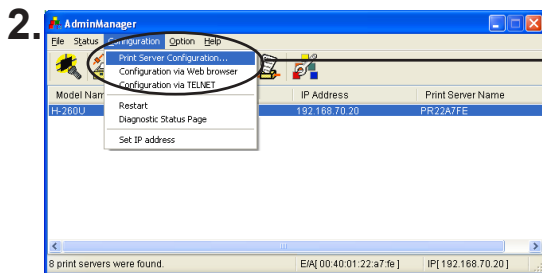
This product supports the “.print Client” function of “.print” which is the network load distributed printing technology of ThinPrint. This product can be registered into the “.print Server Engine” of ThinPrint as a printing printer. The print data in the zone restriction carried out by the “.print Server Engine”, and compressed print data can be received directly and then be output to a printer.



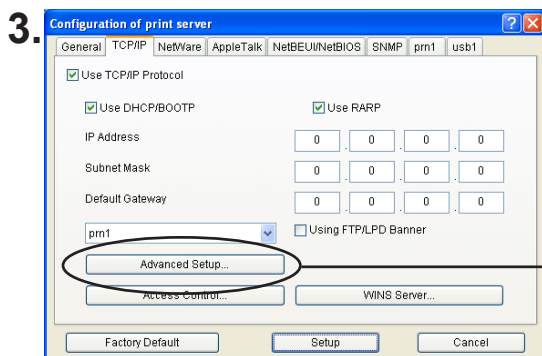
- This product does not support the "Driver Free Printing" function.

This function can setup by using AdminManager, a web browser, or TELNET. The following procedure explains how to configure this product using AdminManager.

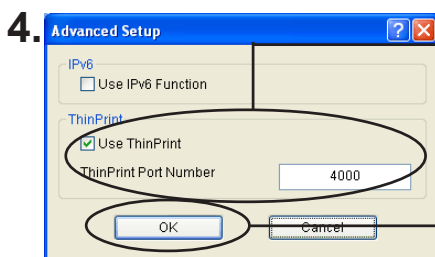
1. Start AdminManager and select this product from a list.



Print Server Configuration is chosen from the **Configuration** menu.



Click **Advanced Setup** on the **TCP/IP** tab.



Check **Use ThinPrint**, and specify a **ThinPrint port number**.

Click **OK**.

5. The screenshot shows a window titled 'Configuration of print server' with tabs for General, TCP/IP, NetWare, AppleTalk, NetBEUI/NetBIOS, SNMP, pm1, and usb1. The 'pm1' tab is selected. Under 'Use TCP/IP Protocol', there are checkboxes for 'Use DHCP/BOOTP' and 'Use RARP', both of which are checked. Below these are input fields for IP Address, Subnet Mask, and Default Gateway, each with four '0' digits. There is a dropdown menu for 'pm1' and a checkbox for 'Using FTP/LPD Banner' which is unchecked. At the bottom, there are buttons for 'Factory Default', 'Setup' (circled in red), and 'Cancel'. A line points from the 'Setup' button to the text 'Click Setup.'

6. The configuration information becomes effective after rebooting the product. By specifying this product to be the printing output place of a .print Server Engine, this product can be used in the .print environment.