

## Startup Guide



FUS-200N

Copyright (C) 2002-2004 silex technology, Inc. All rights reserved.

### ©About this guide.

This startup guide will explain how to install SX-Biometrics Suite (Windows logon protector software) and the FUS-200N fingerprint sensor.

Please refer to the help file for particulars of the functionality of this product. The help file can be activated from the icon at any time.

### ©Contents:

The following items are included in the package:



Startup Guide



CD-ROM



FUS-200N

### ©Supported Operating Systems:

Windows 2000 / Windows XP

### ©PC minimum requirements:

CPU: Pentium II 233MHz (466 MHz or faster recommended)

Memory: 64MB of RAM

Hard drive space available: 30MB

Interface: USB Ver1.1

\* Some fingers may be difficult to enroll due to the condition of the fingertip. If you have a difficult time enrolling, refer to help or contact us for suggestions.

\* Documentation and product specification may change without prior announcement.

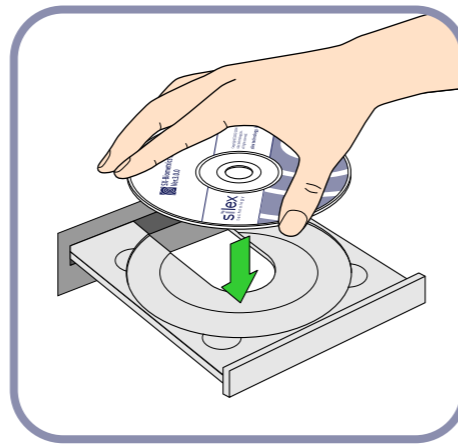
\* Windows is the registered trademark of Microsoft Corporation in the US, and other countries.

## 1. Install FUS-200N driver and SX-Biometrics Suite

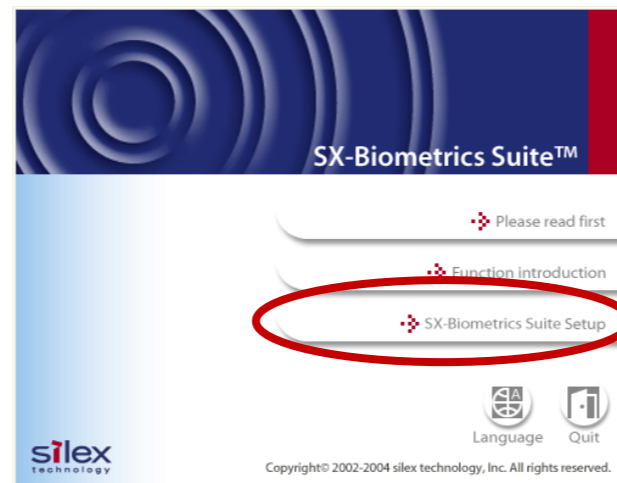
1) Sign into Windows using a Windows logon that has Administrator privileges.

Then put the bundled CD into the PC's CD-ROM drive.

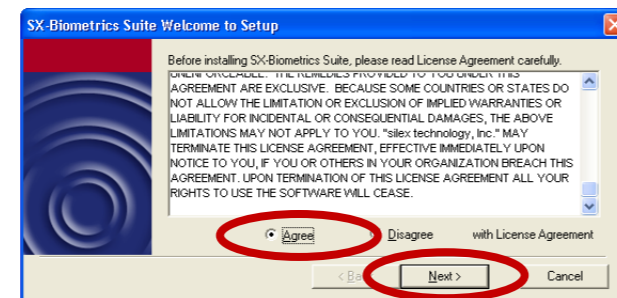
\* If setup does not start automatically, please run autorun.exe from the CD-ROM drive (if your CD-ROM drive is D then run D:\autorun.exe).



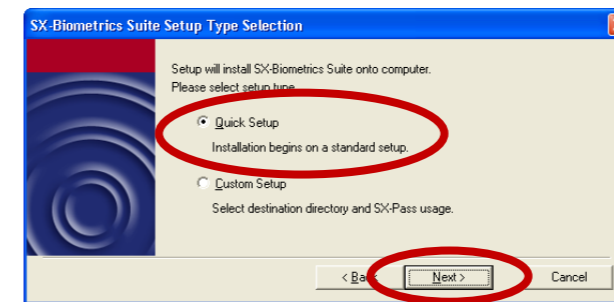
2) When the start menu appears, please click on and read "Please read first" and then "Function introduction". Then click on "SX-Biometrics Suite Setup" to begin the installation.



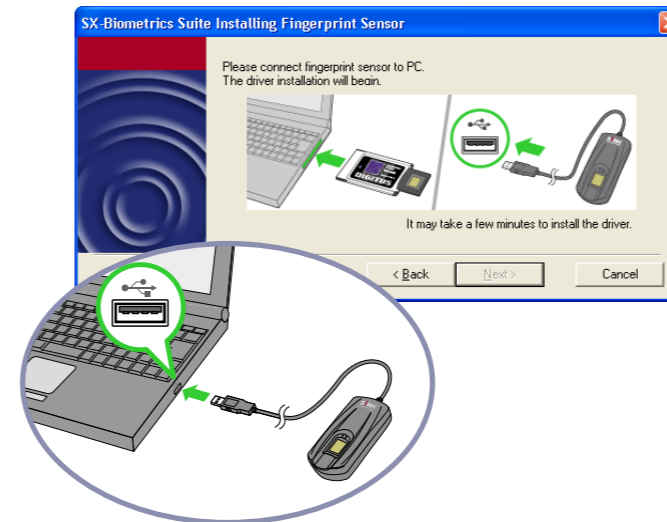
3) When a license agreement is displayed, please read it carefully. If you agree, select "Agree" then click [Next].



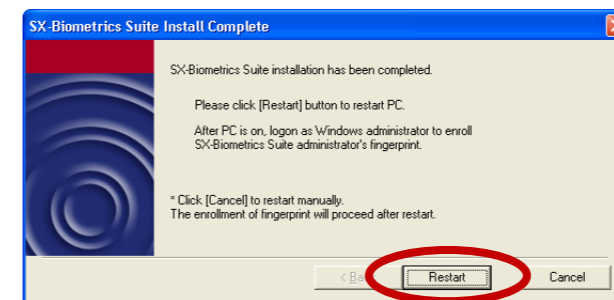
4) Select the setup method and then click [Next]. (This setup guide explains "Quick Setup" procedure.)



5) Please connect fingerprint sensor FUS-200N to the USB port of a PC.



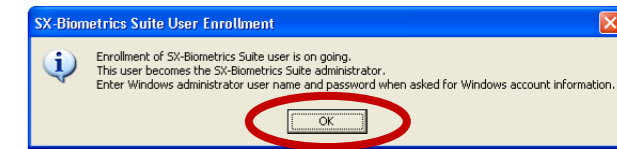
6) When the installation complete screen is displayed, click [Restart] to reboot the computer.



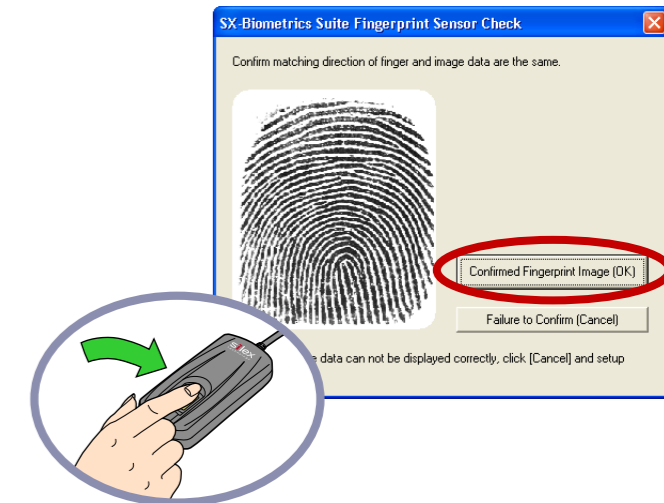
After rebooting, sign on to PC using a Windows account that has Administrator's privileges.

## 2. Check the Fingerprint Sensor

1) A screen informing you that SX-Biometrics Suite installation is on going will appear. Click [OK] to continue.



2) When the screen of a sensor check is displayed, please place a fingertip on the fingerprint sensor. If a fingerprint image is displayed then click [OK].

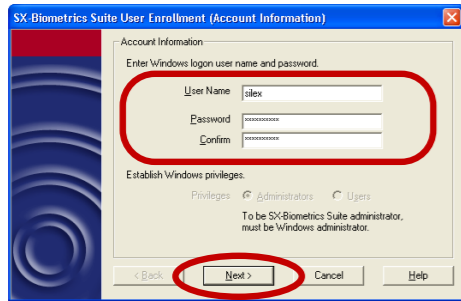


Turn this sheet over (to the back side) to continue installation. ➡

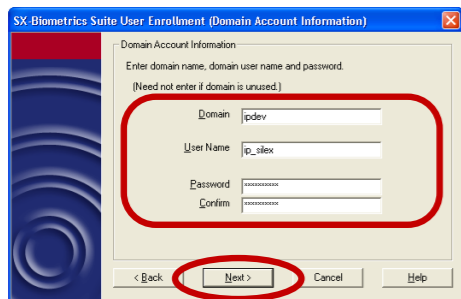
### 3. Register Administrator information

1) Register a user continuously. Enter a Windows username and password (with administrator privilege). Then click [Next].

\* Since the initial SX-Biometrics Suite user must be an administrator, the privilege level does not need to be specified.

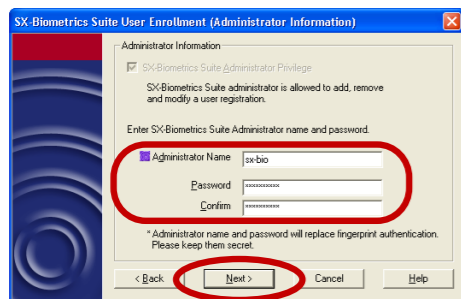


2) If this PC is used in a domain environment enter the domain account information and click [Next]. Otherwise, leave the field in this screen blank and click [Next].



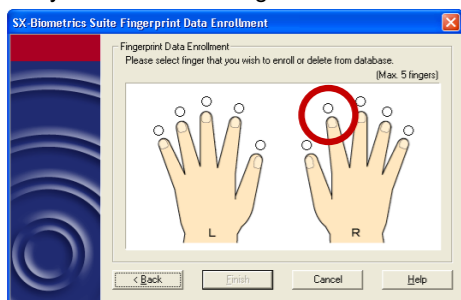
! Nothing needs to be entered if you are not in a domain environment.

3) Enter an administrator name and password to be used for SX-Biometrics Suite.



! The administrator name and password set up here can be used in conjunction with a "Hot-key" to logon instead of using fingerprint authentication. Please keep this information secure and secret.

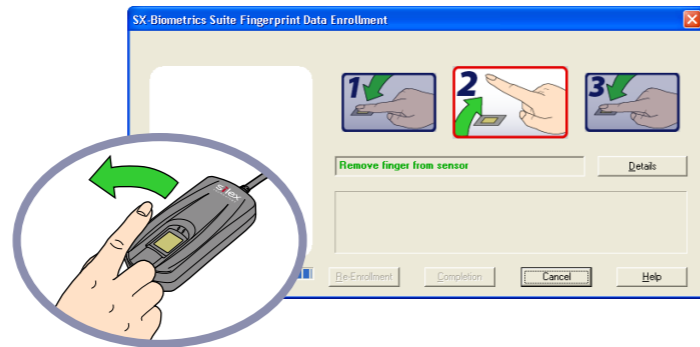
4) Click on a finger that you would like to register.



5) Place the selected finger on the fingerprint sensor. The fingerprint image will appear and the status indicator will increase.



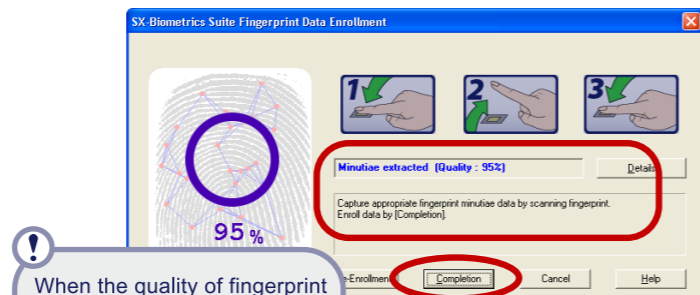
6) Once the image data has been captured, advance to step 2.



7) Place the same finger on the fingerprint sensor.



8) If verification succeeds, minutiae point percentage will be expressed and enrolled. Click [Completion] to complete the enrollment of that finger.



! When the quality of fingerprint data is bad, verification may fail. Please enroll the highest quality fingerprint data possible.

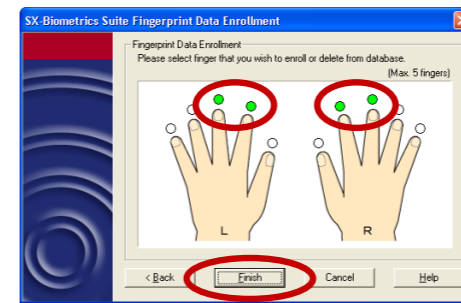
When "X" is displayed, the fingerprint could not be verified and thus could not be enrolled. Click [Re-Enrollment].



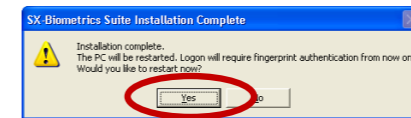
\* If after several attempts you can't enroll, click [Cancel] and select another finger for enrollment.

9) Repeat steps 4-8 to enroll up to five fingerprints.

Once you have enrolled the desired fingers, click [Finish] to complete.



10) The setup of SX-Biometrics Suite is complete. The next time you boot the pc, you will logon by fingerprint authentication. Click [Yes] to reboot.



### 4. Logon by Fingerprint Authentication

1) When the PC is booted, the SX-Biometrics Suite authentication screen will be displayed. Please place a registered finger on the fingerprint sensor.

The status indicator will advance while verifying the fingerprint. Once the fingerprint has been verified you will be logged into Windows.



If the authentication fails, the screen to the right will appear. Press [Ctrl] [Alt] [Del] keys simultaneously and try again.



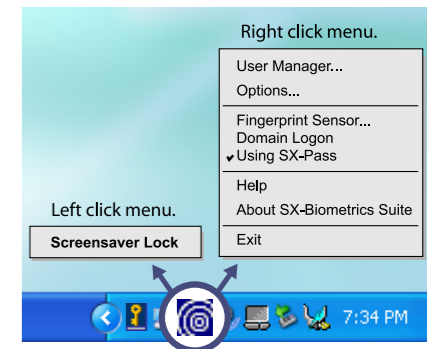
### 5. How to activate and cancel functions

1) Double-click the SX-Logon icon in the system tray to activate the screensaver lock.

2) To unlock the PC, use the same fingerprint authentication used to logon.

⊙Icon menu

The SX-Logon icon can display two menus. By left clicking the icon, an option to start the screensaver lock will appear. Right clicking the icon will bring up a menu that includes items such as user manager and options.



Right click menu.

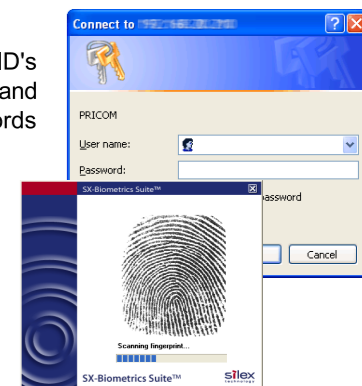
User Manager <sup>*1</sup>	You can add and delete users and can modify users' information.
Options <sup>*1</sup>	Security level can be viewed and modified.
Fingerprint Sensor	Check if sensor is dirty.
Domain Logon <sup>*2</sup>	Remove local domain logon check next time you logon to local.
Using SX-Pass	SX-Pass is ended if a check is put out.
Help	Help file can be displayed.
About SX-Biometrics Suite	Display version information of SX-Biometrics Suite.
Exit	The icon disappears from system tray when exiting SX-Logon.

\*1: Only the administrator of SX-Biometrics Suite can operate [User Manager] and [Options].  
\*2: [Domain Logon] is displayed only when domain account information has been entered.

⊙SX-Pass

Up to 100 passwords and user ID's can be stored for the web pages and applications that require passwords for authentication.

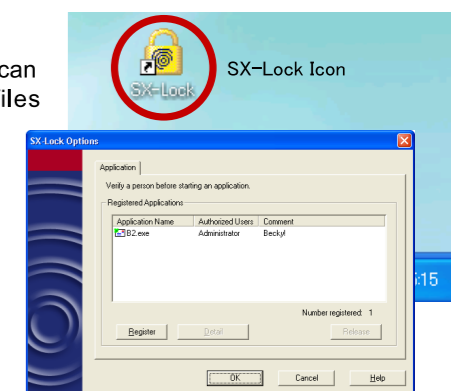
Fingerprint authentication can replace ID's and passwords when desired.



⊙SX-Lock

Only authorized users can access and activate files and applications when they are locked using SX-Lock.

Encryption and decode can be activated by selecting Lock from the menu or by right clicking on the file or application.



➔ Please refer to the help file for particulars of the functionality.